



**Background:**

ODFW is collecting public feedback on fall salmon seasons. This document includes information shared in the webinar and additional detail on 2022 escapement, 2023 forecasts, and proposed fishing seasons for wild chinook and coho within the CMP zone.

**Other Data Sources:**

Wild fish abundance with the CMP zone for 2021 and prior are reported here

[https://www.dfw.state.or.us/fish/crp/docs/coastal\\_multispecies/2014-2021%20CMP%20WFMS.pdf](https://www.dfw.state.or.us/fish/crp/docs/coastal_multispecies/2014-2021%20CMP%20WFMS.pdf)

\*These reports are updated between August-Oct annually.

Wild fish abundance within the Rogue plan zone are reported here

[https://www.dfw.state.or.us/fish/CRP/rogue\\_fall\\_chinook\\_conservation\\_plan.asp](https://www.dfw.state.or.us/fish/CRP/rogue_fall_chinook_conservation_plan.asp)

	River Basin	2022 Chinook Spawners	2023 Chinook Forecast	2023 Wild Chinook Bag Limits: Daily/Year		2023 Chinook season dates	2023 Wild Coho Bag Limits: Daily/Year	2023 Coho season dates
				Alternative 1	Alternative 2			
North Coast	Necanicum	-	-	1/2	1/2	8/1-11/30	-	
	Nehalem	4,830	7,974	1/2 <i>(Jan 1 – Sep 15: 1/1)</i>	1/5 <i>(Jan 1 – Sep 15: 1/1)</i>	7/1-11/30	1/2	Sat/Wed 9/9-10/18
	Tillamook	3,390	3,535	1/2	1/2	8/1-11/30	1/2	Sat/Wed 9/9-10/18
	Nestucca	4,718	5,543	1/5	1/5	8/1-11/30	1/2	Sat/Wed 9/9-10/18
Mid Coast	Salmon	1,807	1,613	1/5	2/10	8/1-12/31	-	-
	Siletz	11,275	8,748	1/5	2/10	8/1-12/31	1/1	9/15-10/31
	Yaquina	6,193	8,779	1/5	2/10	8/1-12/31	1/1	9/15-10/13
	Beaver Cr	-	-	-	-	-	1/1	11/1-11/30
	Alsea	8,429	7,801	1/5	2/10	8/1-12/31	1/1	9/15-10/15
	Yachats	-	-	1/2	1/5	8/1-12/31	-	-
	Siuslaw	5,816	6,978	1/2	1/2	8/1-12/31	1/1	9/15-10/15
Umpqua	Umpqua	5,574	6,379	1/5	1/5	7/1-11/30	-	-
Mid-South Coast	Coos	6,116	9,075	1/5	2/10	7/1-12/31	1/3	9/15-10/10
	Coquille	908	1,202	Closed	Closed		1/3	9/15-10/10
	Floras/New	151	166	1/1	1/1	7/1-12/31	1/2	11/1-11/30
	Sixes	3,105	3,024	1/5	1/10	7/1-12/31	-	
	Elk	1,743	1,906	hatchery Chinook only	hatchery Chinook only		-	
Coast wide				Jacks under permanent rule	Jacks under permanent rule		1/5 coastwide in aggregate. 1 jack/day when open	

Below critical abundance threshold  
Tillamook and Siuslaw likely would have been below critical abundance in 2022 if wild Chinook harvest closures were not in place

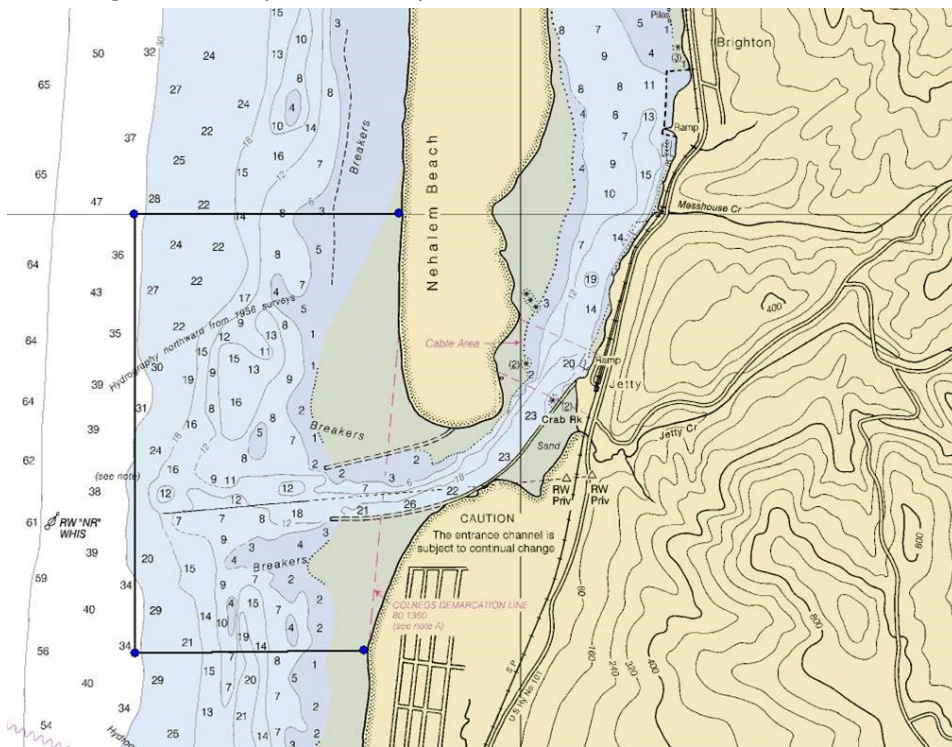
# Ocean bubble proposals

## Tillamook

- Sept 1-Oct 31
- Pyramid Rock-Twin Rocks shoreward of the 15 fathom line
- Same bag limits as bay/river fishery

## Nehalem

- Sept 1-Oct 31
- Nehalem Bubble: Described as a seaward rectangle, approximately 0.4 miles south and 0.7 miles north of the center of the channel and 0.5 miles seaward from the mouth of the Nehalem River, defined by the following waypoints (and see map):
  - Point 1: 45° 39' 00" Latitude and 123° 56' 31" W Longitude
  - Point 2: 45° 39' 00" Latitude and 123° 57' 15" W Longitude
  - Point 3: 45° 40' 00" Latitude and 123° 57' 15" W Longitude
  - Point 4: 45° 40' 00" Latitude and 123° 56' 24" W Longitude
- Same bag limits as bay/river fishery



## Elk/Sixes

- Nov. 1-30
- Daily Limits:
  - Recreational – 1 Chinook
  - Commercial – 10 Chinook
- Season and landing limits set to limit harvest <600 Chinook

## Chetco

- Recreational: Oct. 7-8 and Oct. 14-15
- Commercial: Oct. 9-13 and Oct. 16-31
- Daily Limits:
  - Recreational – 1 Chinook
  - Commercial – 8 Chinook (season quota = 400)
- Fishery designed as equitable split between recreational and commercial
- Fishery since 1992; last open 2018
- No general ocean commercial or recreational Chinook salmon season
- If terminal fishery adopted, river closed from mouth to RM 2.2 from 10/7-10/15