

Sage-grouse Conservation Assessment and Strategy Update

Mikal Cline – Upland Game Bird Coordinator

Skyler Vold – Sage-grouse Conservation Coordinator



**Oregon Department
of Fish and Wildlife**



Photo by Keith Kohl



ODFW's Commitment to Sage-grouse Management

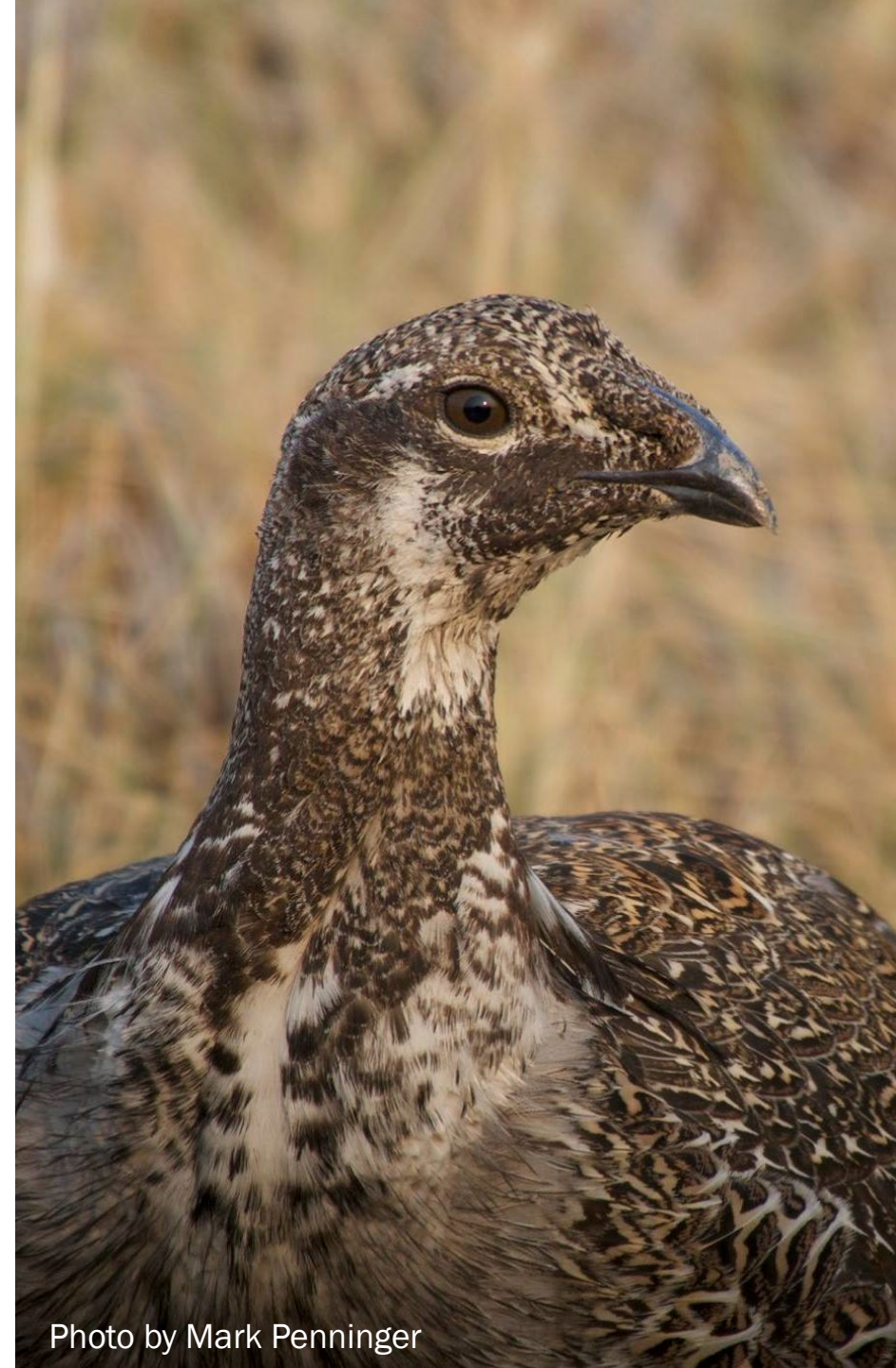
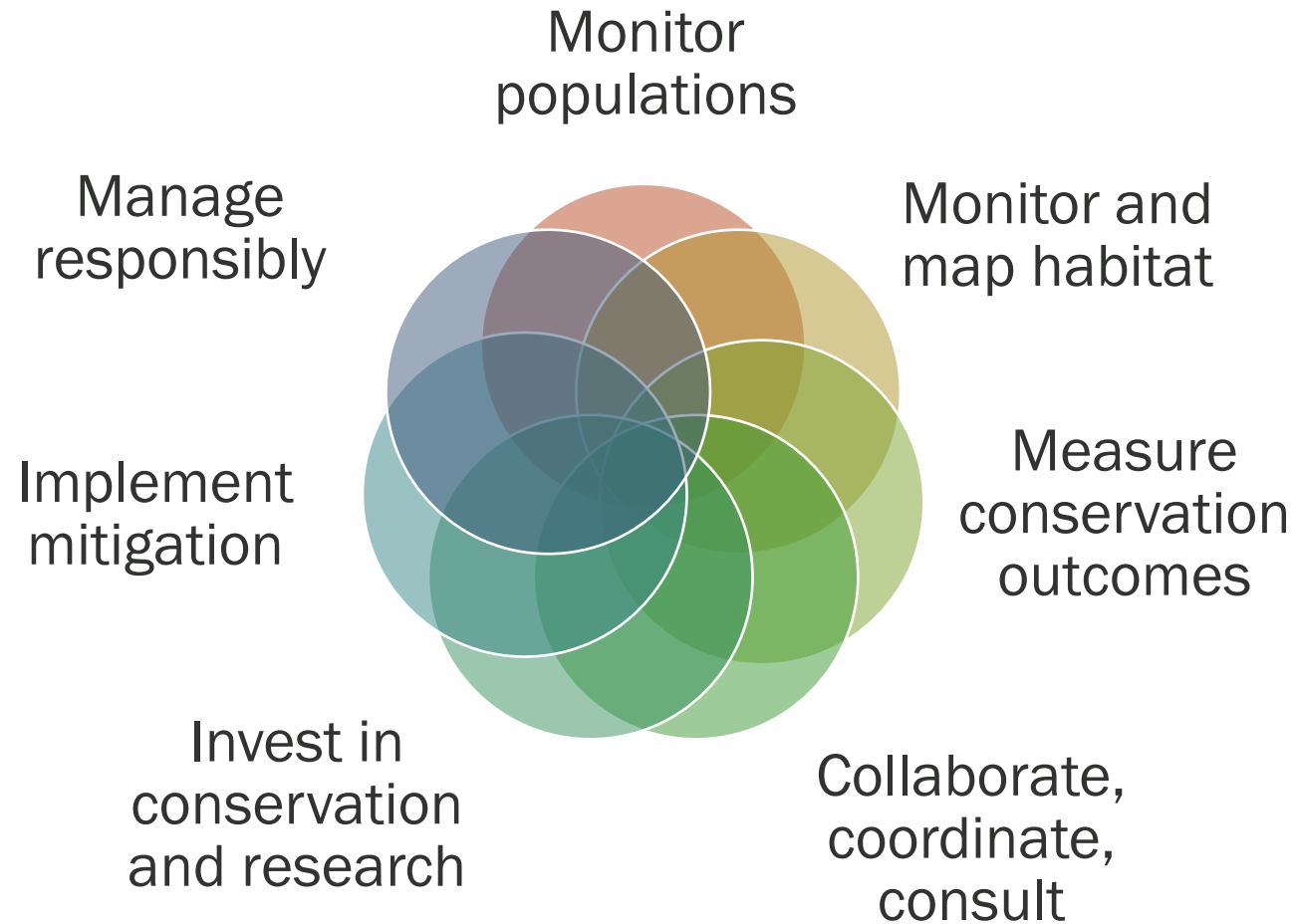


Photo by Mark Penninger



What is new or changing?

Tier CAAS to
Action Plan

New
Population
Model

New Lek
Definitions

New PACs,
maps

Population
and Habitat
Objectives

Threat-based
Strategic
Conservation

LIT
Governance

Regulation
(mitigation)

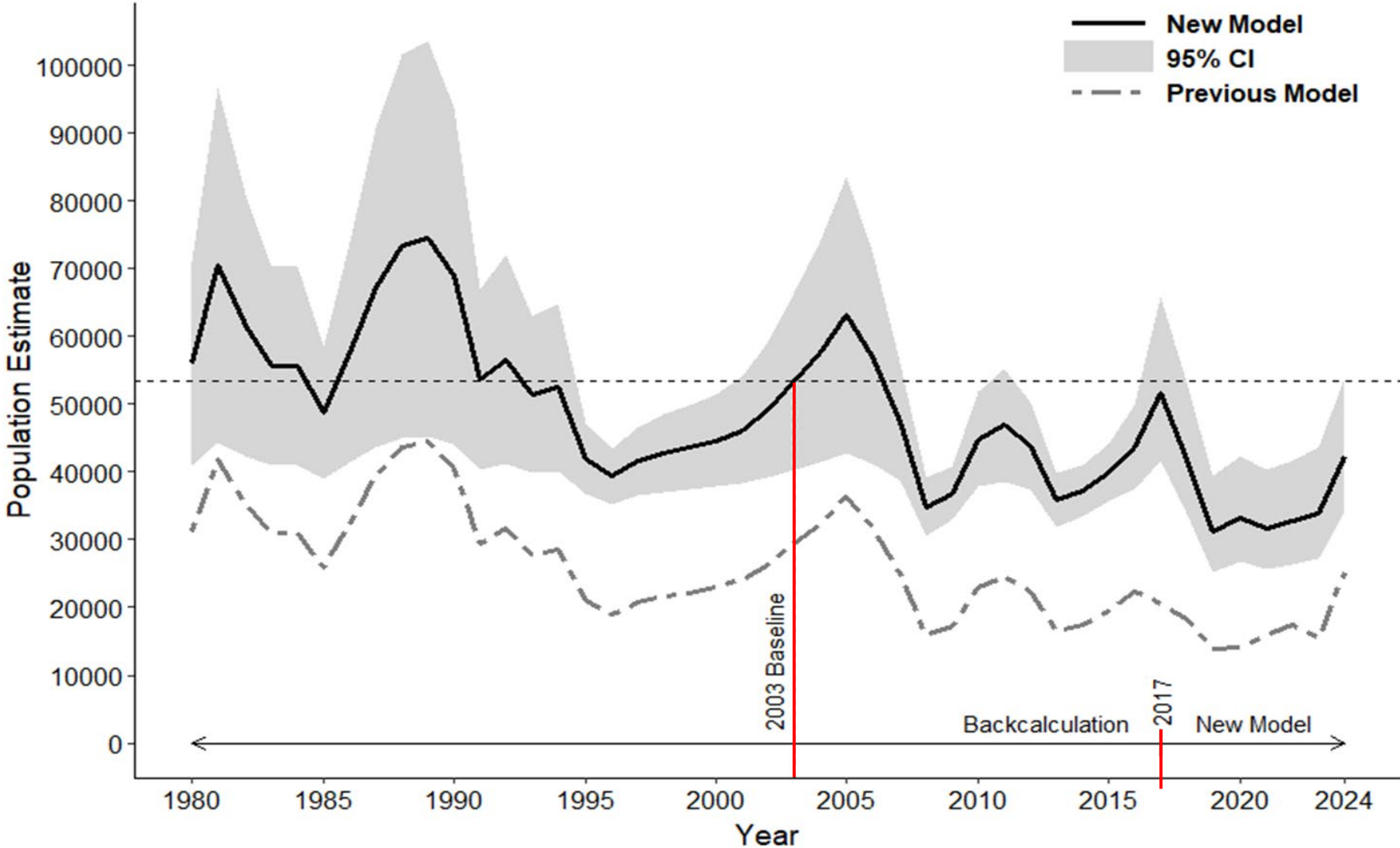
Best
Management
Practices



Photo by Emily Weidner



New Population Model

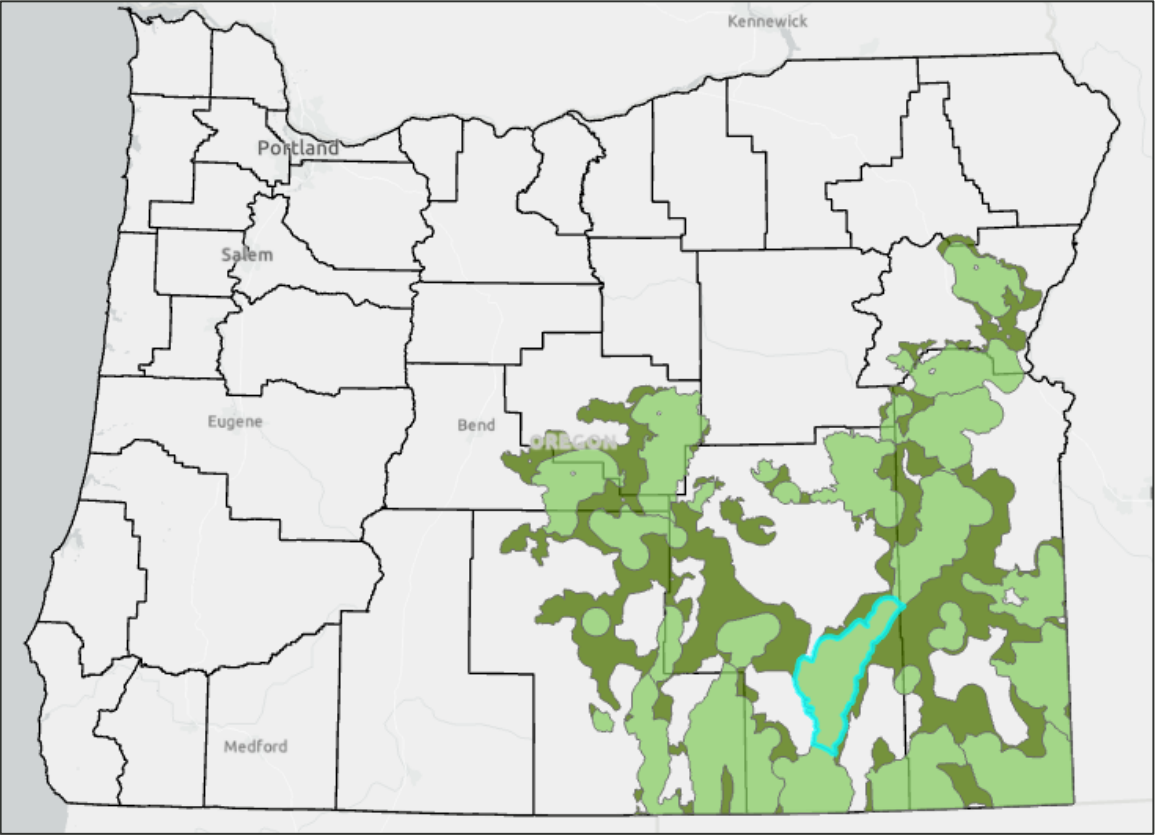
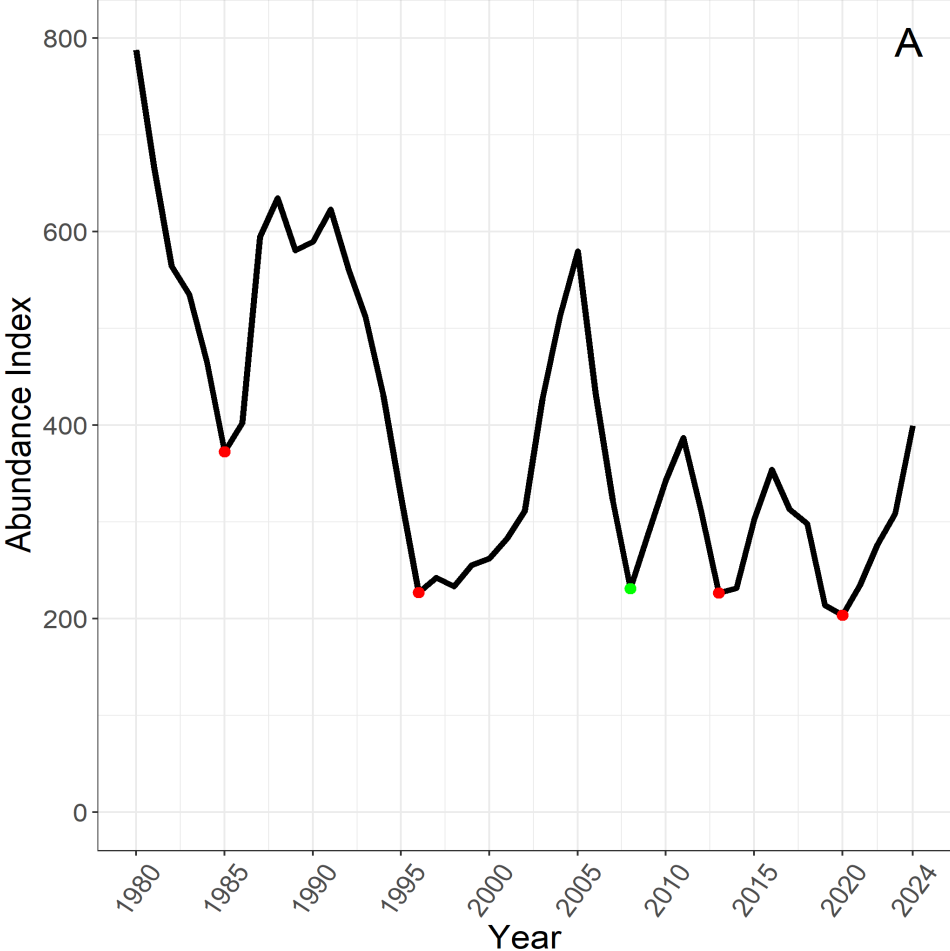




PAC-Scale Trend Analyses

- Abundance data from USGS Rangewide Lek Monitoring Framework

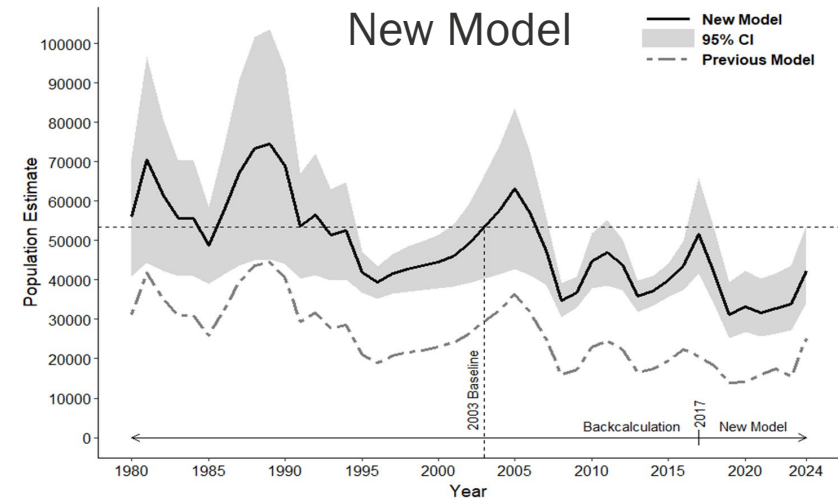
Steens PAC Trends



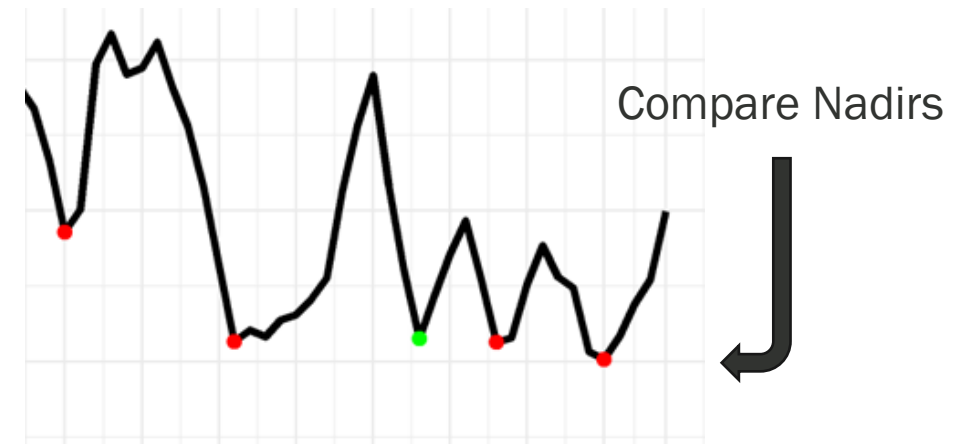


Update Population Objective in OAR

- Manage sage-grouse to maintain or enhance their statewide distribution and abundance oscillating around the 2003 population level, ~53,000 birds.



- Manage populations to maintain stable or increasing population trends statewide and at the PAC-scale.





Harvest Management

Incorporating Population Model into Permit Recommendations

- Stay conservative (<5%)
- Consider compounding factors
- Consult PAC-level trends
- Adequate wing samples



Photo by Keith Kohl

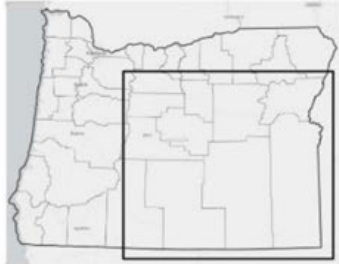


Core and Low-Density Habitat Map Update

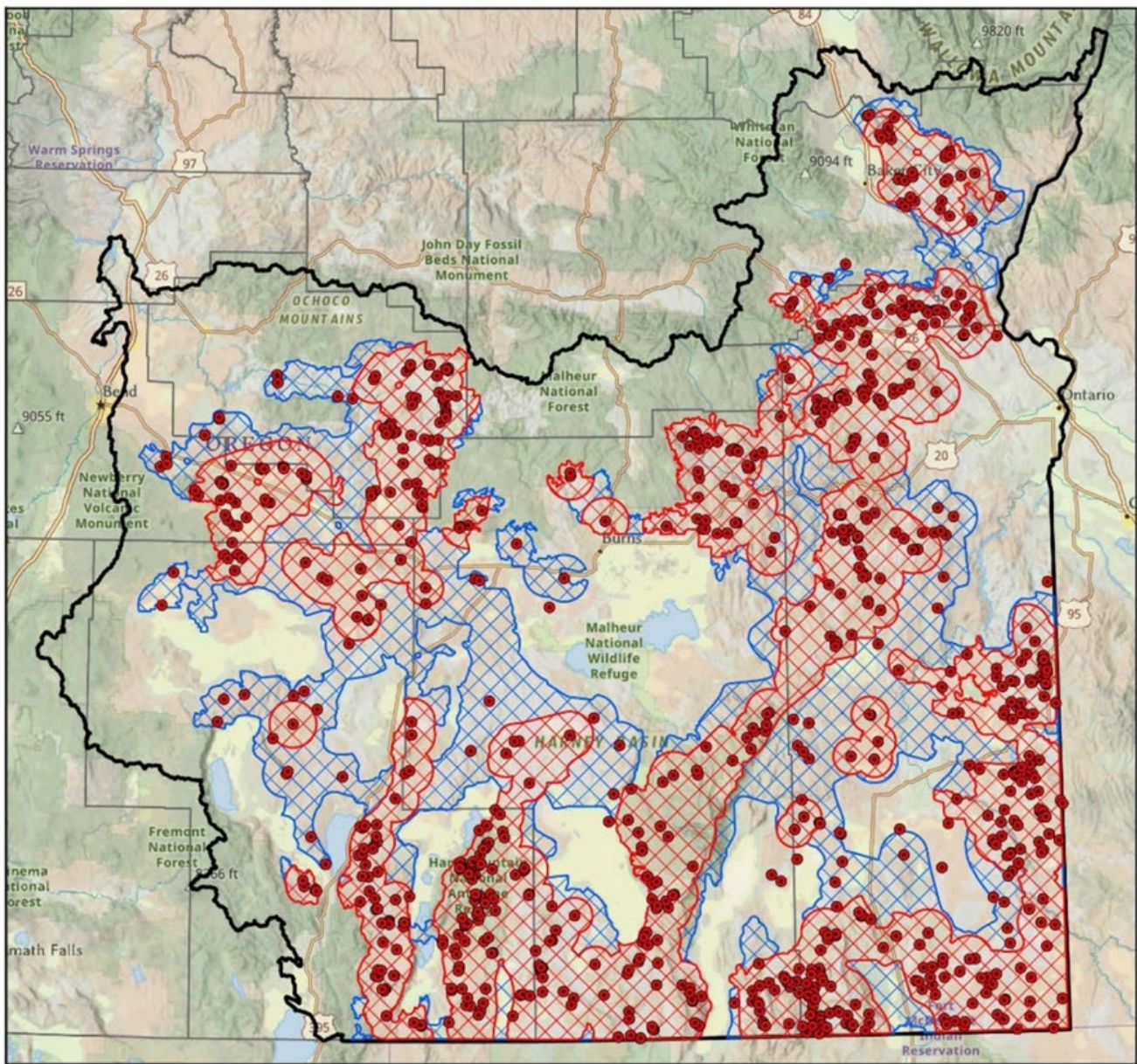
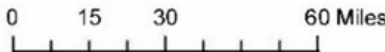


Significant Sage-Grouse Habitat, 2023: Core and Low-Density

- Legend**
- Occupied or Occupied-Pending Leaks, 2023
 - ▨ Core Habitat
 - ▨ Low-Density Habitat
 - County Boundary
 - ▭ SageCon Boundary



The Significant Sage-Grouse Habitat Map [core and low-density habitat] was updated by ODFW in 2023 with the Department's most recent sage-grouse data and the best available science, following the methodology outlined in the ODFW Sage-Grouse Conservation Assessment and Strategy. As part of the update process, the draft map was reviewed by ODFW District Biologists, cooperating agency biologists, conservation partners, and the public to ground-truth and refine the boundaries at a 1:10,000 scale. The final map was adopted by the Oregon Fish and Wildlife Commission on 15 December 2023. Cartography for this map was completed by ODFW on 8 May 2024.





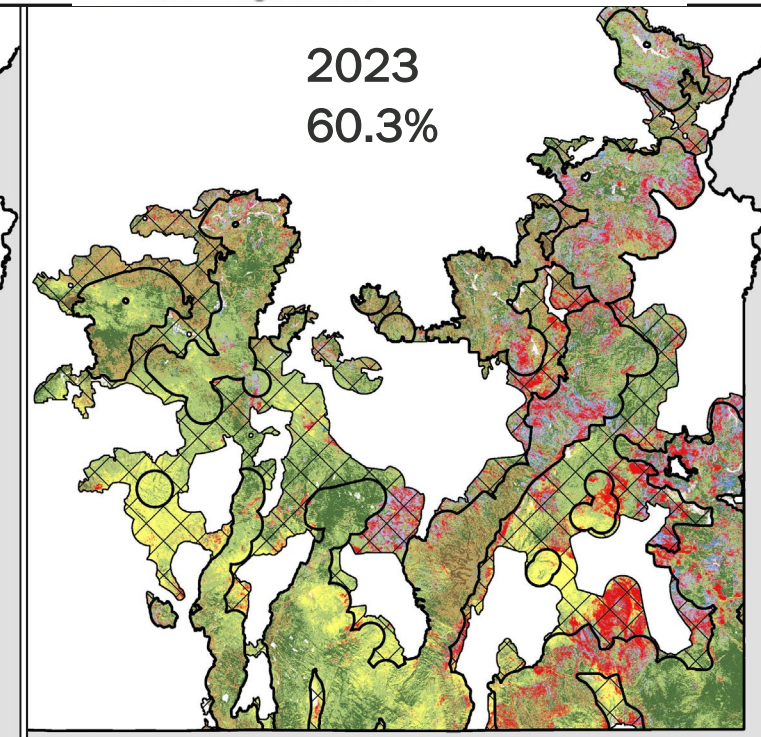
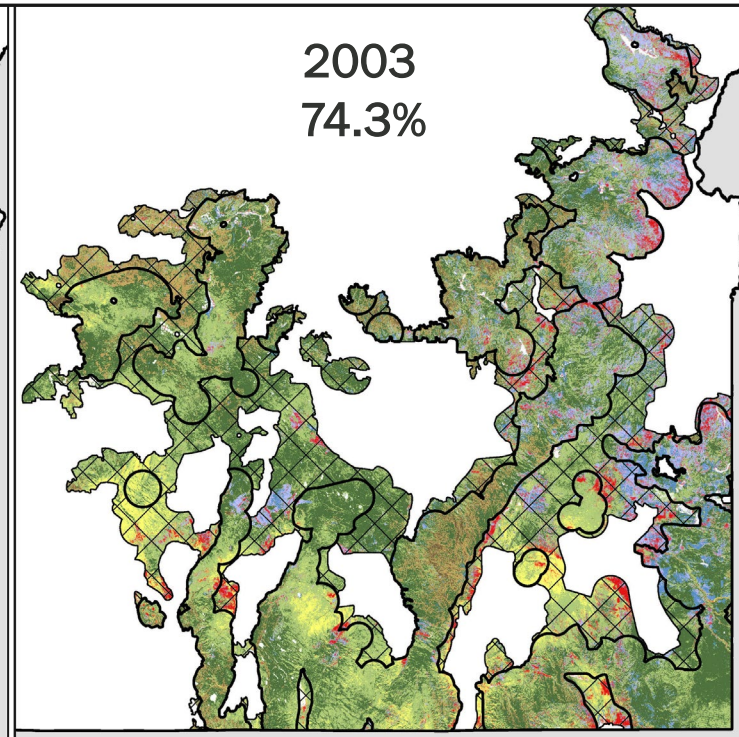
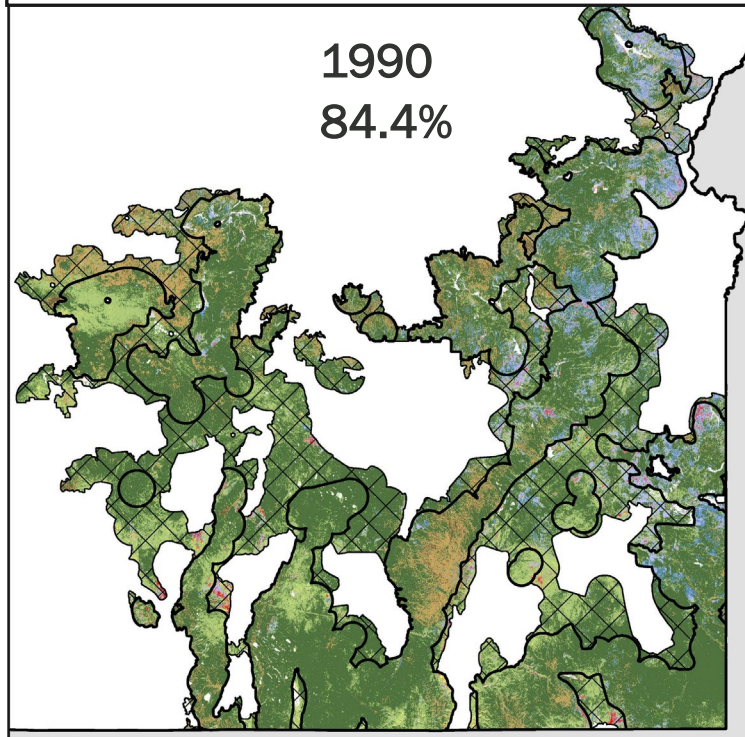
New Habitat Objectives in OAR

Minimum of 70% sagebrush habitat in ecostates:

- A (good condition shrubland),
- B (good condition grassland), and
- A-C (intermediate condition shrubland) at both the statewide and PAC levels.

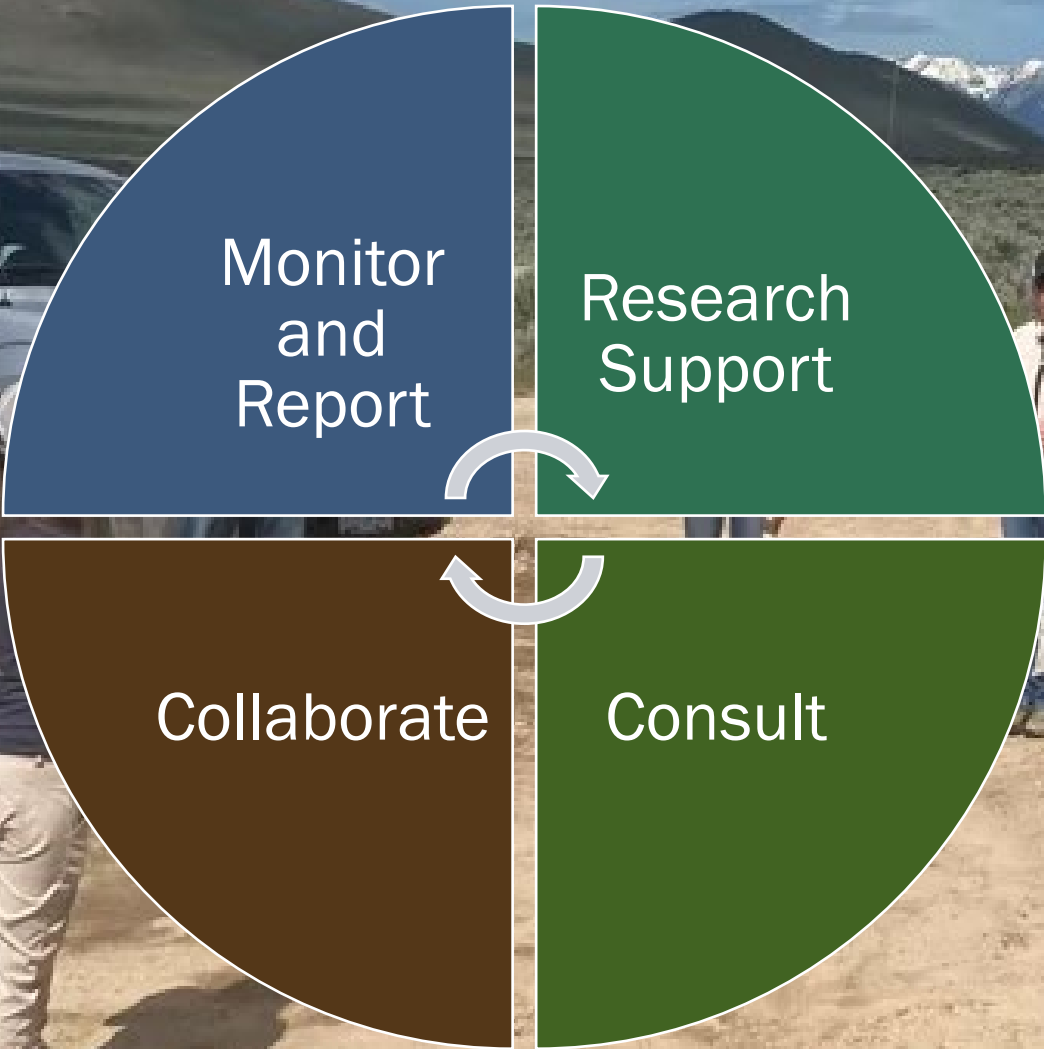
Ecostate Categories

- * A: Good condition shrubland
- * A-C: Intermediate condition shrubland
- C: Poor condition grassland
- * B: Good condition grassland
- B-D: Intermediate condition grassland
- D: Poor condition grassland
- Tree: low-mid cover
- Tree: high cover





ODFW Partnership Commitments



Outreach & Next Steps



Photo by Keith Kohl





Photo by Keith Kohl

Thank you!

Questions?



**Oregon Department
of Fish and Wildlife**