

Oregon Sage-Grouse Controlled Permit Hunt Adjustments to the 2025 Season



Mikal Cline, Upland Game Bird Coordinator
Skyler Vold, Sage-grouse Conservation Coordinator



2025 Sage-Grouse Controlled Hunt



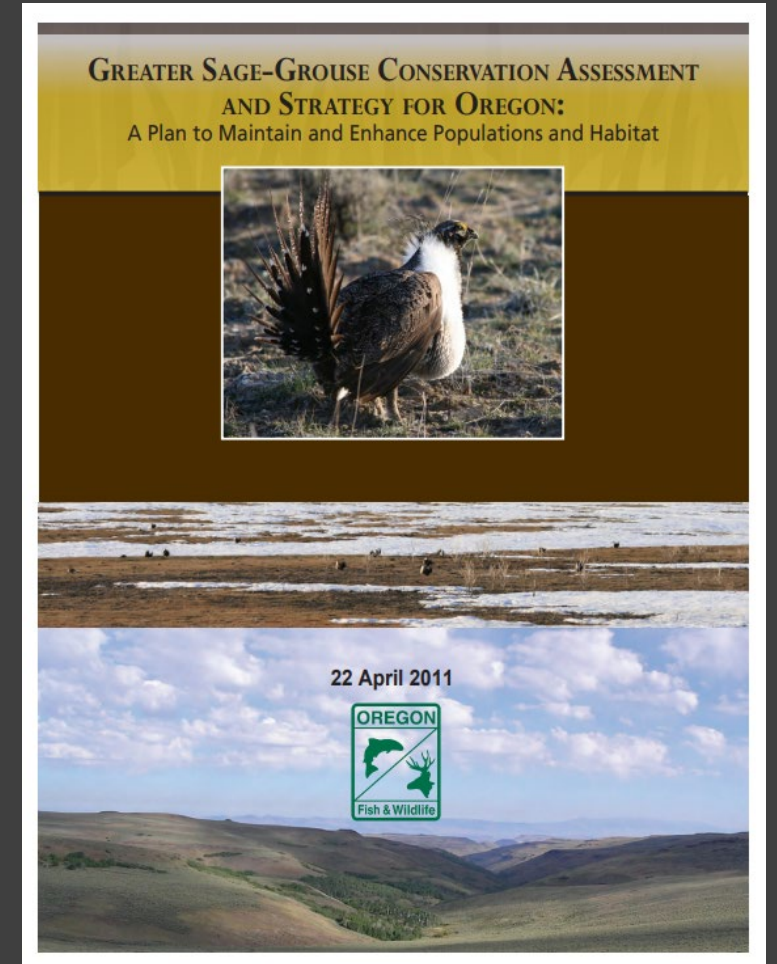
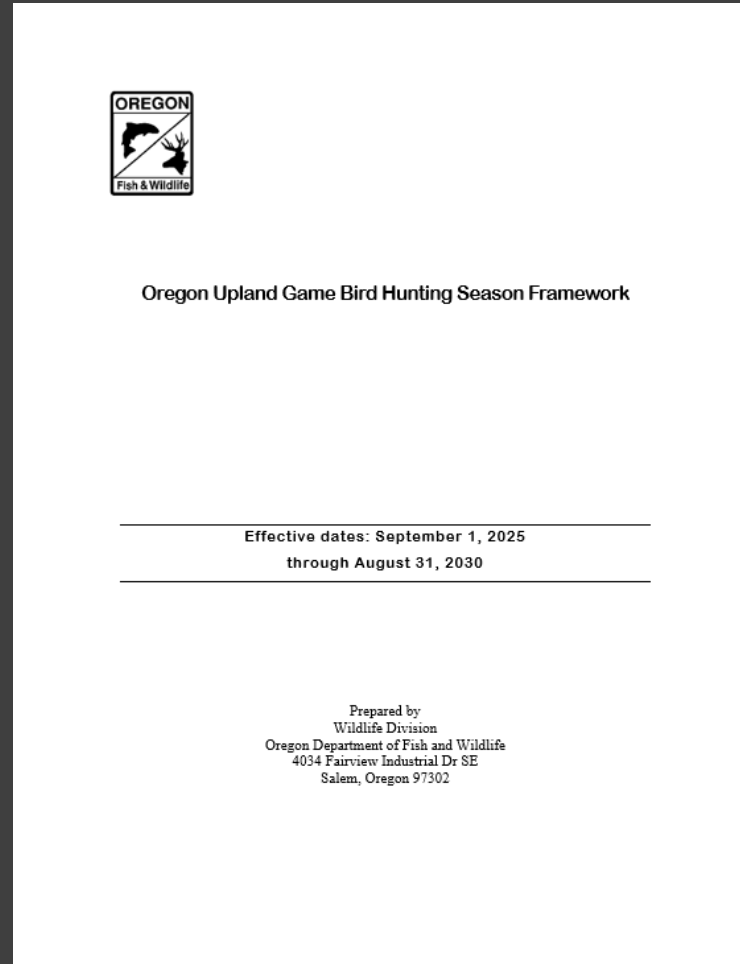
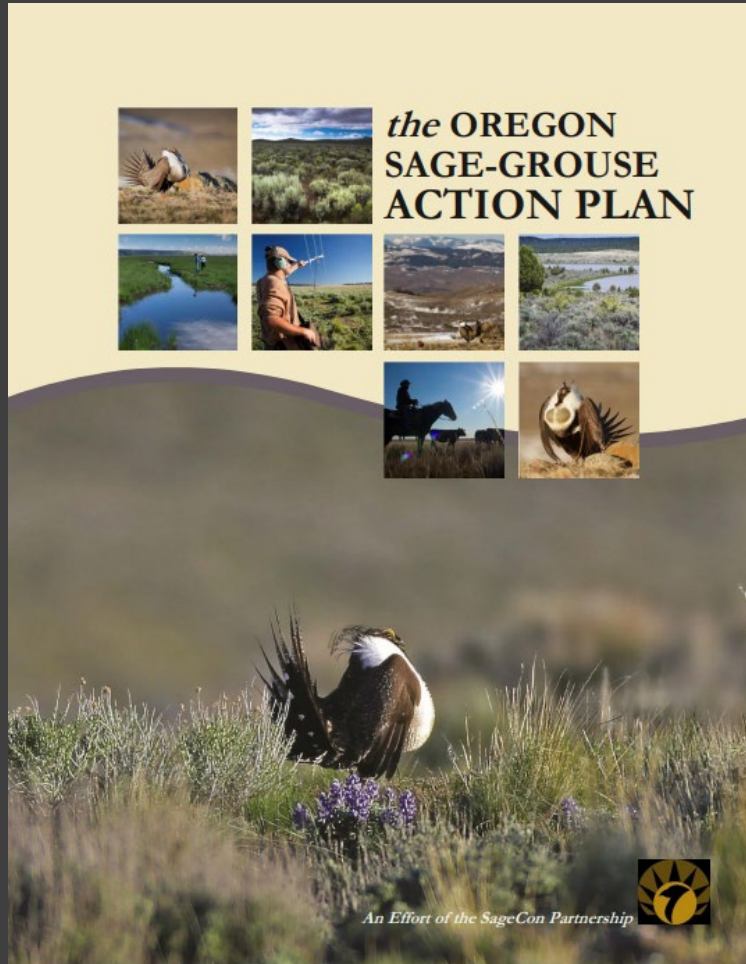
SEASON	OPEN AREA	OPEN SEASON	SEASON BAG LIMIT
Sage-Grouse	WMUs 65-70, 72-74	Sept. 6 – 14, 2025	2 Sage-Grouse

Recommendation: Same permit levels as 2024, unless adjustment is required after 2025 analysis.
Maintain harvest at <5% of estimated fall population by WMU.

Why Hunt Sage-Grouse?

- Adaptive and conservative season
- Wing collections provide vital data
- Upland Validations fund conservation and research
- Habitat is the key to sage-grouse conservation

Hunting & Harvest Guidelines



Calculating Sage-Grouse Permits



Spring
Counts



Fall
Population
Prediction



Harvest
Allowed
($<5\%$)



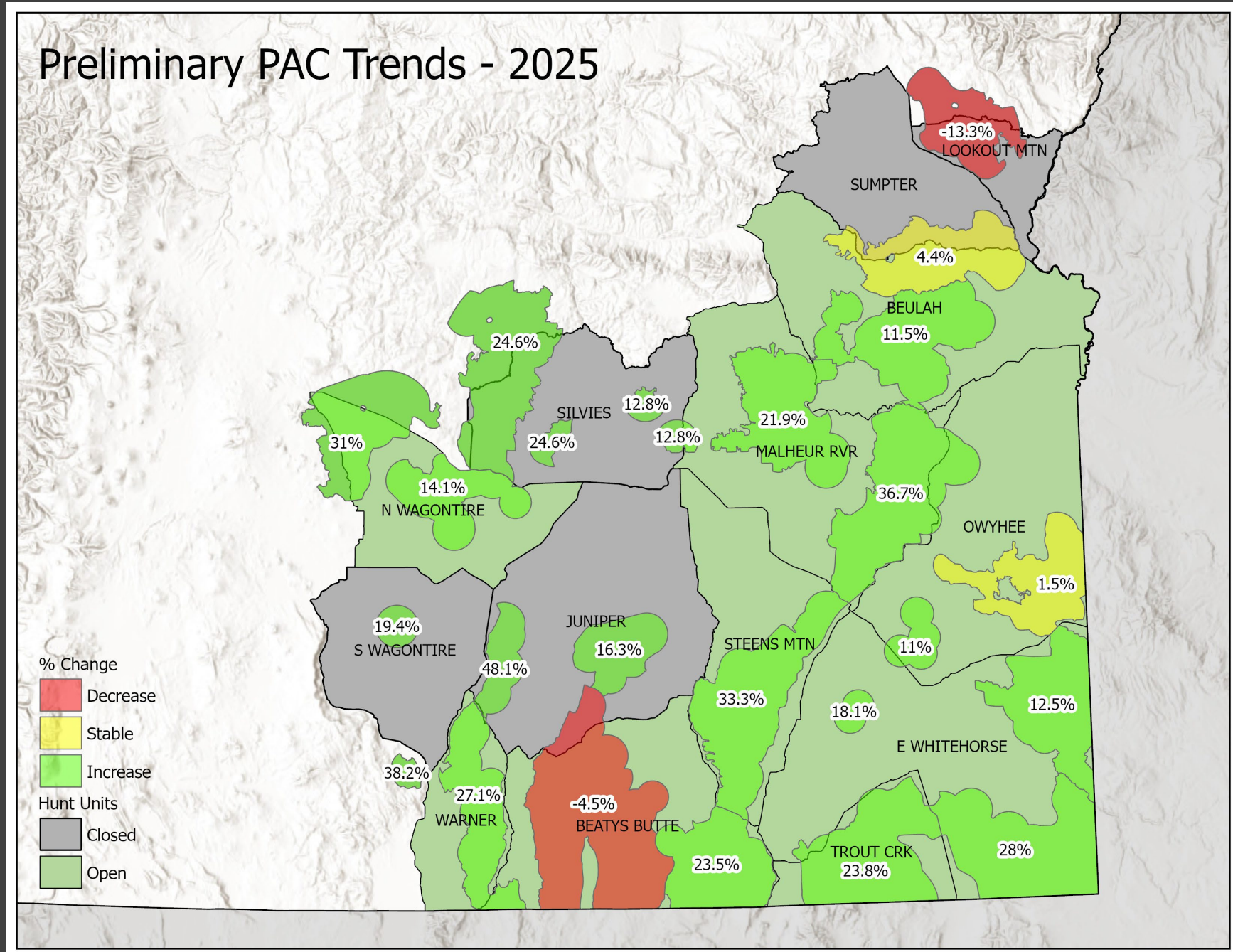
Other
Factors



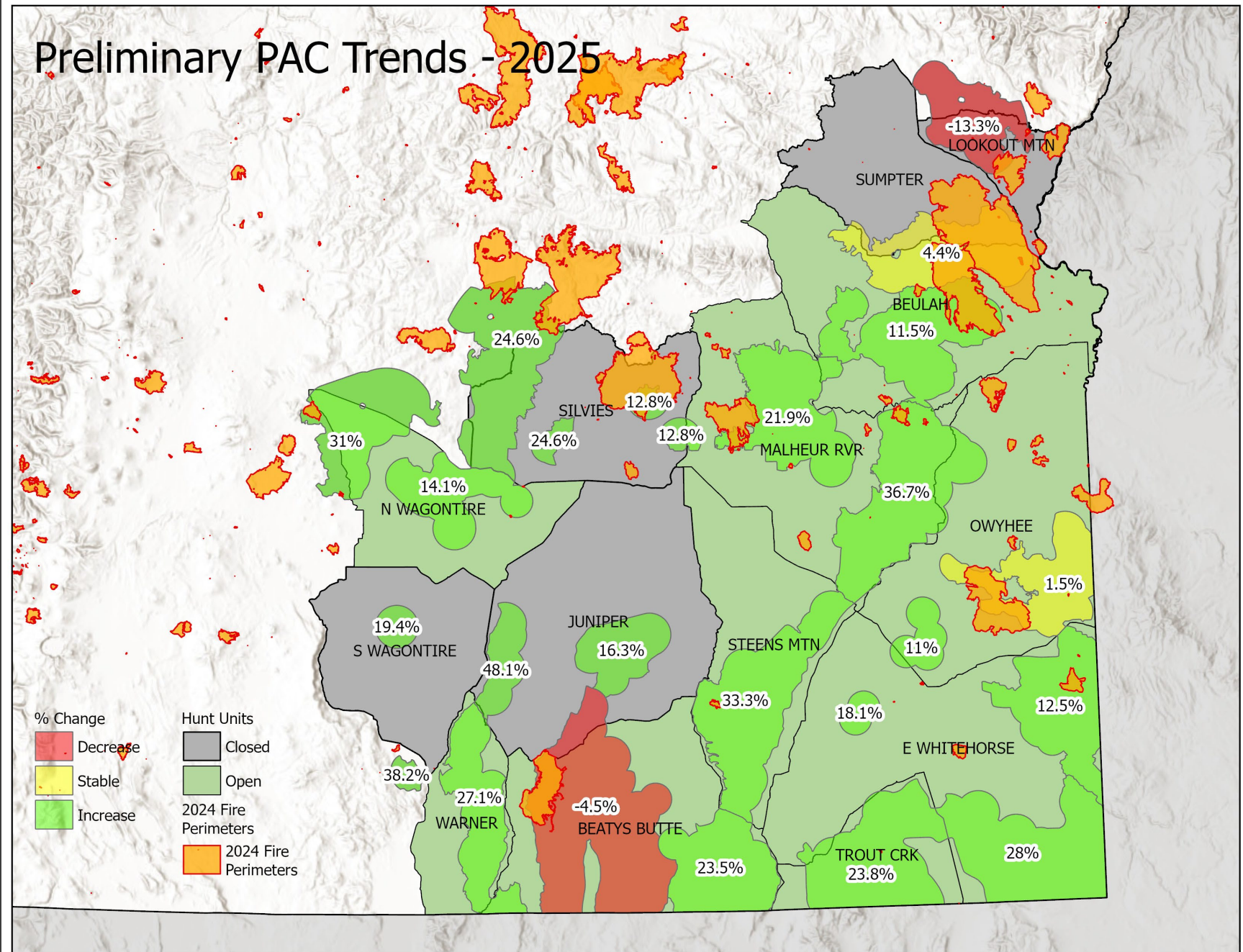
Set
Permits

General Increase in Sage-grouse Abundance

+17.8% increase in
statewide
abundance since
2024



Fires
impacted
some units
in 2024



Populations Respond to Precipitation

2024 Wingbee Results

INDICATOR	2024	Average
Chicks/hen	2.25	1.48
% Juveniles	55%	47%



Rod Klus (retired ODFW) examines a hunter-submitted sage-grouse wing

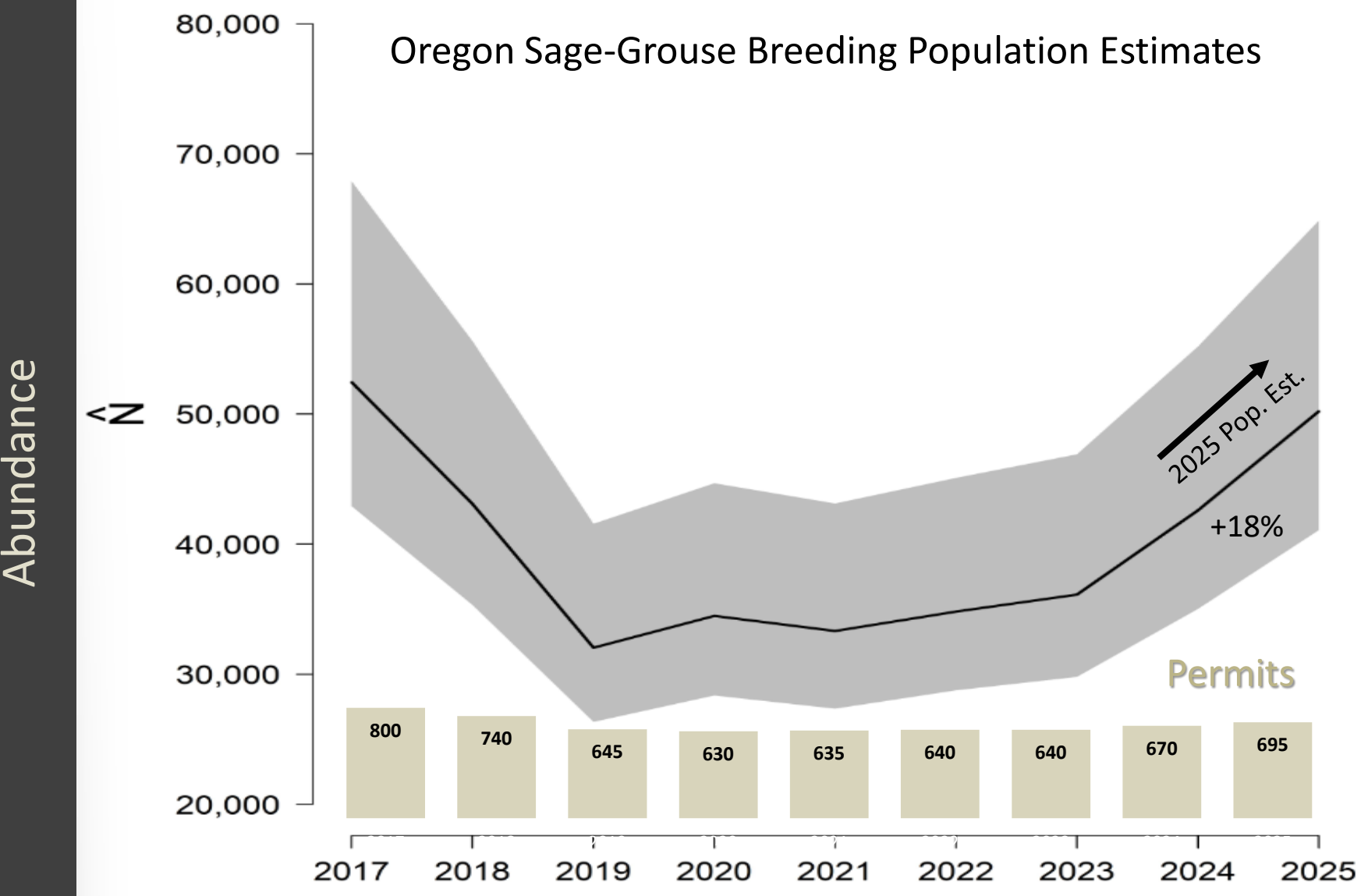
Photos: ODFW, Karl Findling



2025 Survey Results and Observations

INDICATOR	Field Report
Lek Counts	Mostly stable or increasing
Aerial Surveys	12 new leks in Steens, Sheephead Mtns
Habitat	Another wet spring

Sage-grouse Populations are Increasing



2025 Controlled Sage-grouse Season Permit Adjustment Recommendations

Hunt Number	Hunt Name	April Approved	August Adjustments
J65	Beulah	125	125
J66	Malheur River	100	110
J67	Owyhee	50	45
J68A	Trout Creek Mtns	40	45
J68B	E. Whitehorse	100	110
J69	Steens Mtn	50	60
J70	Beatys Butte	90	90
J72	Silvies	20	0
J73A	N. Wagontire	25	30
J74	Warner	70	80
Total		670	695



Draft Motion:

I move to amend OAR Chapter 635, Division 53 as proposed by staff and shown in Attachment 3.