

# Sage-grouse Conservation Assessment and Strategy

Mikal Cline – Upland Game Bird Coordinator  
Skyler Vold – Sage-grouse Conservation Coordinator

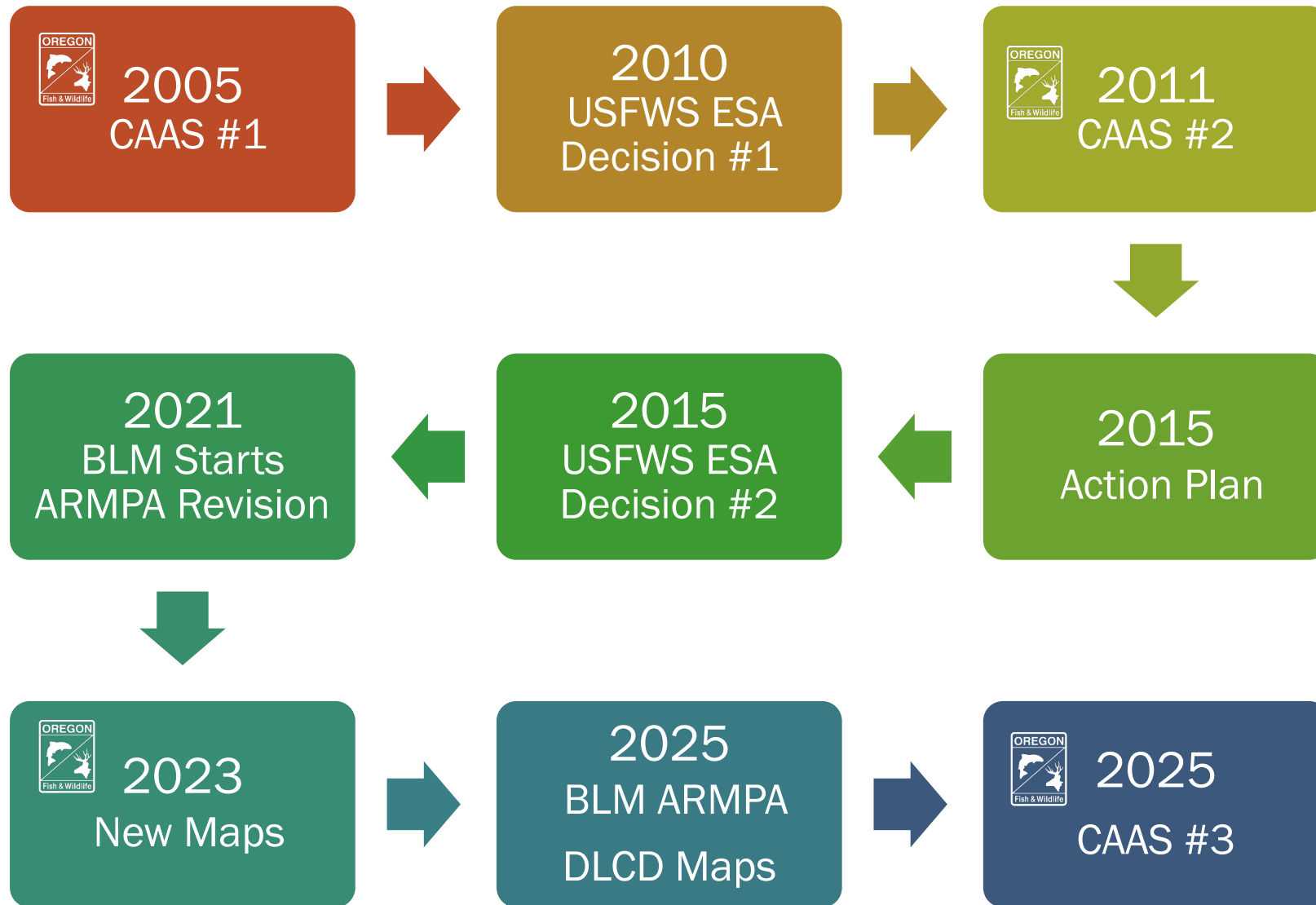


**Oregon Department  
of Fish and Wildlife**



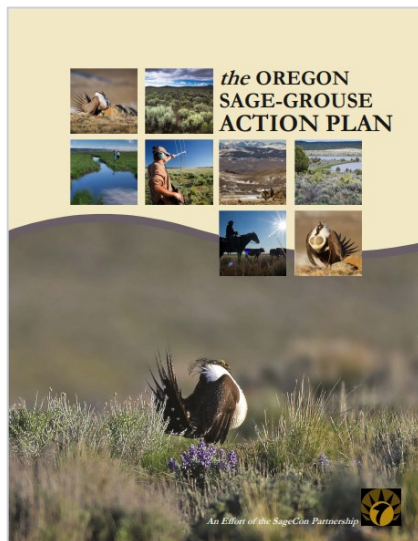
Photo by Keith Kohl

# Timeline of Events





# Oregon Sage-grouse Plans

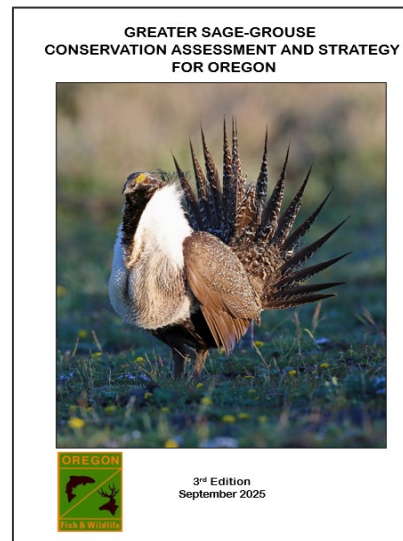


## The Oregon Sage-grouse Action Plan (2015)

- All Partners
- All Activities



SAGE CON  
PARTNERSHIP



## Greater Sage-grouse Conservation Assessment & Strategy for Oregon

- Tiers to Action Plan
- SWAP tiers to CAAS



## BLM Sage-grouse Approved Resource Management Plan Amendments

- Habitat-specific
- BLM lands only
- Coordinated with ODFW



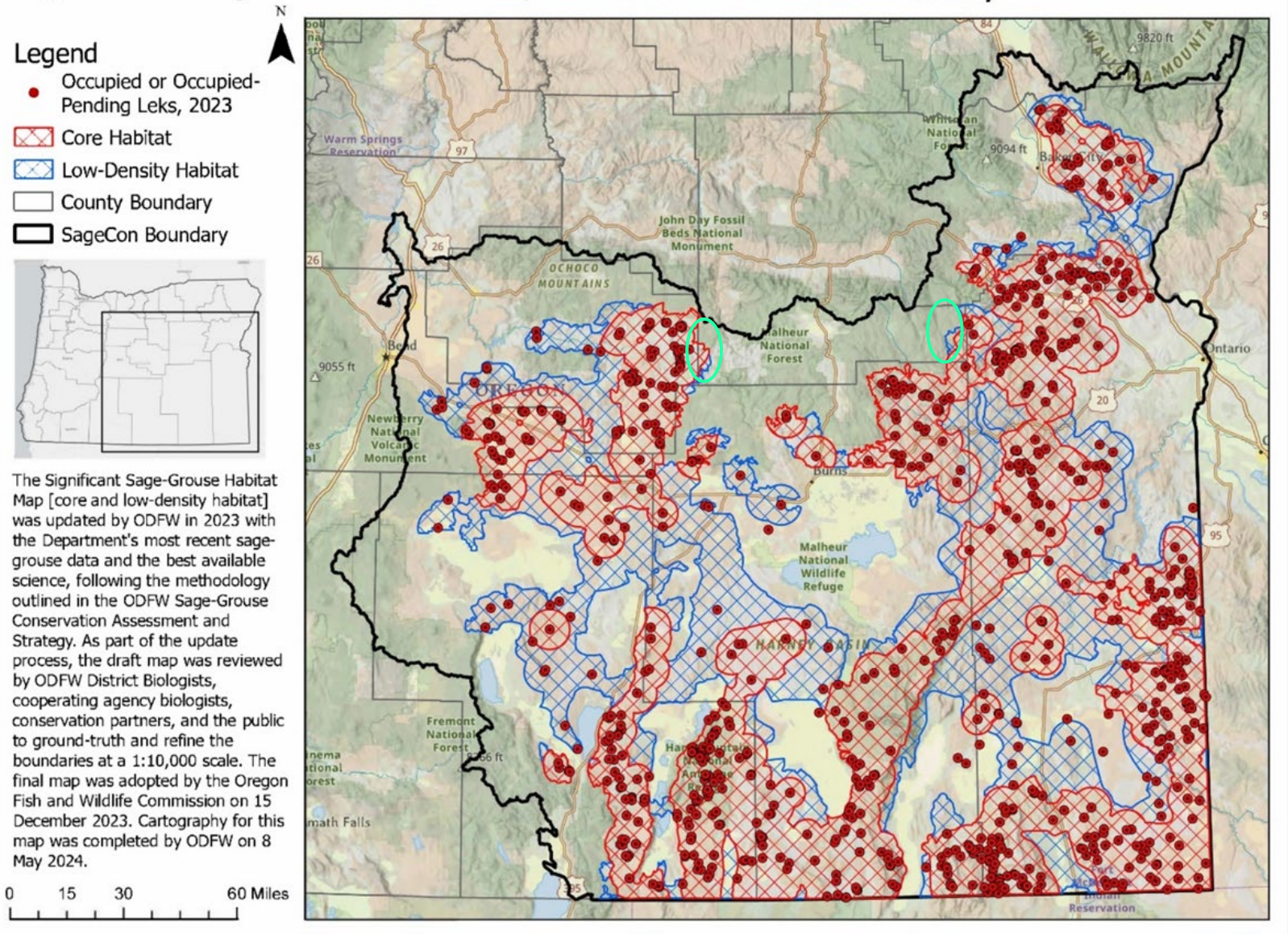


# Maps are used by ODFW, DLCD, BLM

- Core habitat covers 90% of breeding range
- Low-density covers 10%
- ODFW Mitigation Rules apply
- DLCD Sage-grouse Rule
- BLM ARMPA coordination



## Significant Sage-Grouse Habitat, 2023: Core and Low-Density





# Major Updates to CAAS

Tier CAAS to  
Action Plan

New  
Population  
Model

New Lek  
Definitions

New PACs,  
maps

Population  
and Habitat  
Objectives

Threat-based  
Strategic  
Conservation

LIT  
Governance

Regulation  
(mitigation)

Best  
Management  
Practices



Photo by Mark Penninger



# How We Define Leks Matters

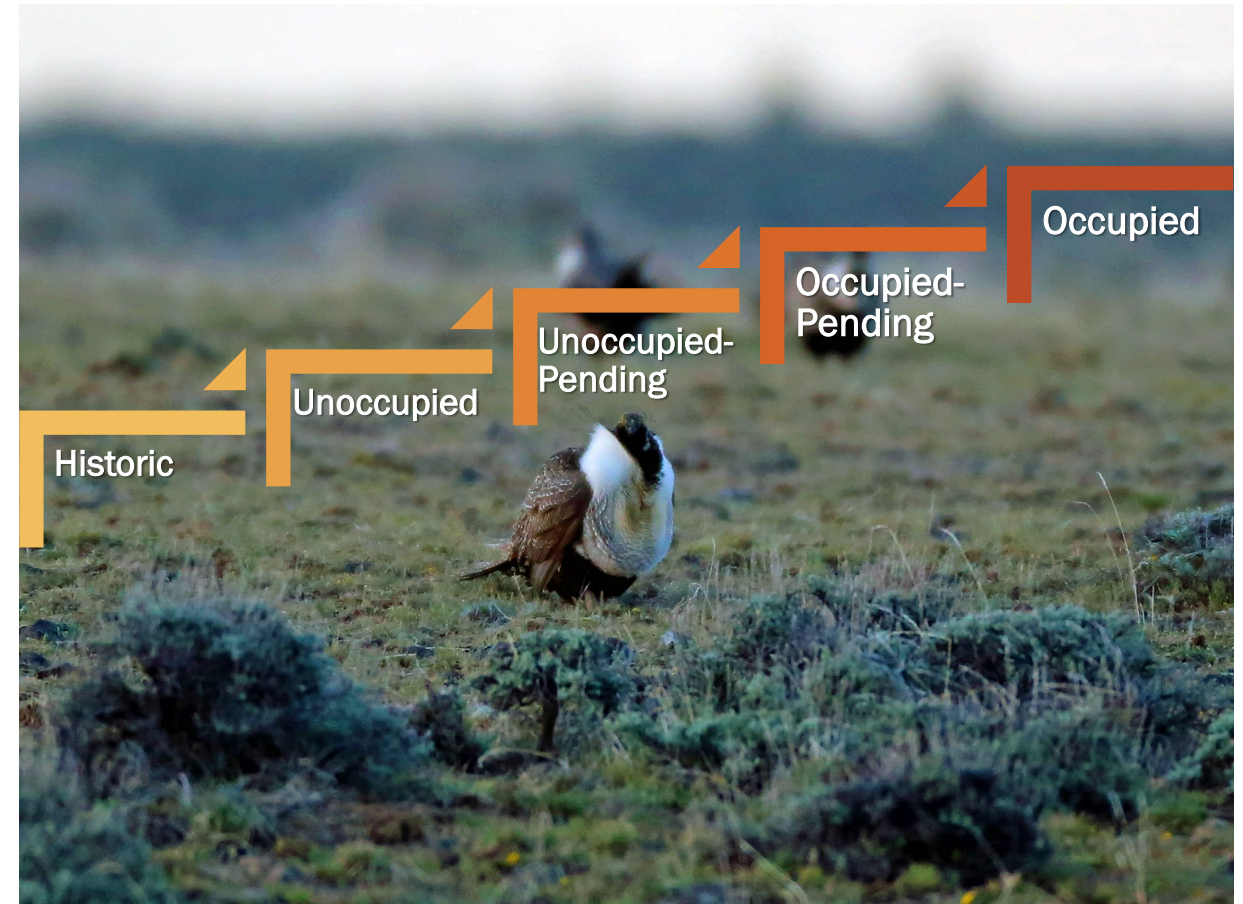
Monitoring Priorities

Habitat Restoration

Range Map

Mitigation Values

BLM Objectives



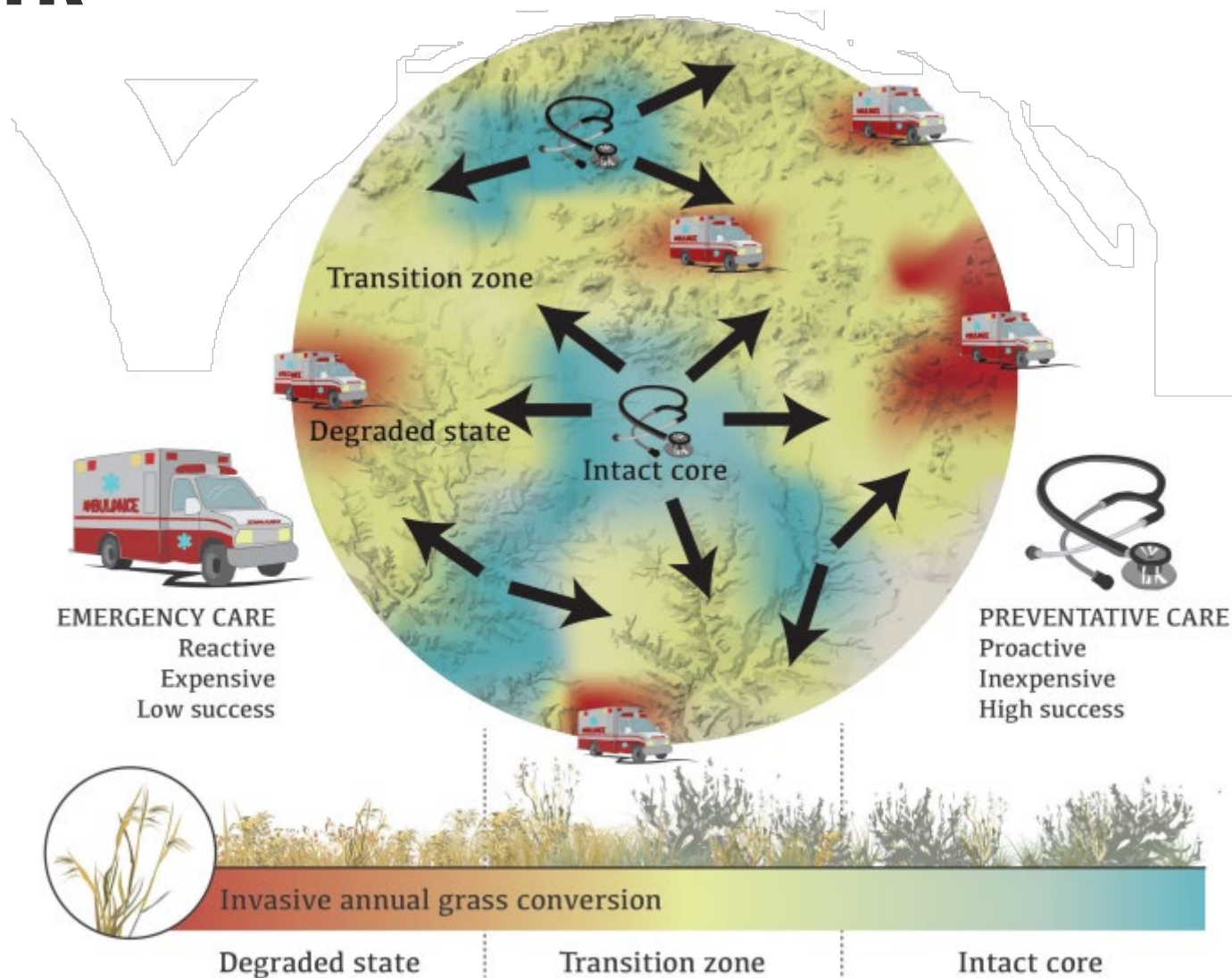


# Prioritizing the Work

Defend the Core

Grow the Core

Mitigate Impacts



Credit: USDA-NRCS, Working Lands for Wildlife



# Regulation & Mitigation

Sage-  
grouse  
Mitigation  
Program

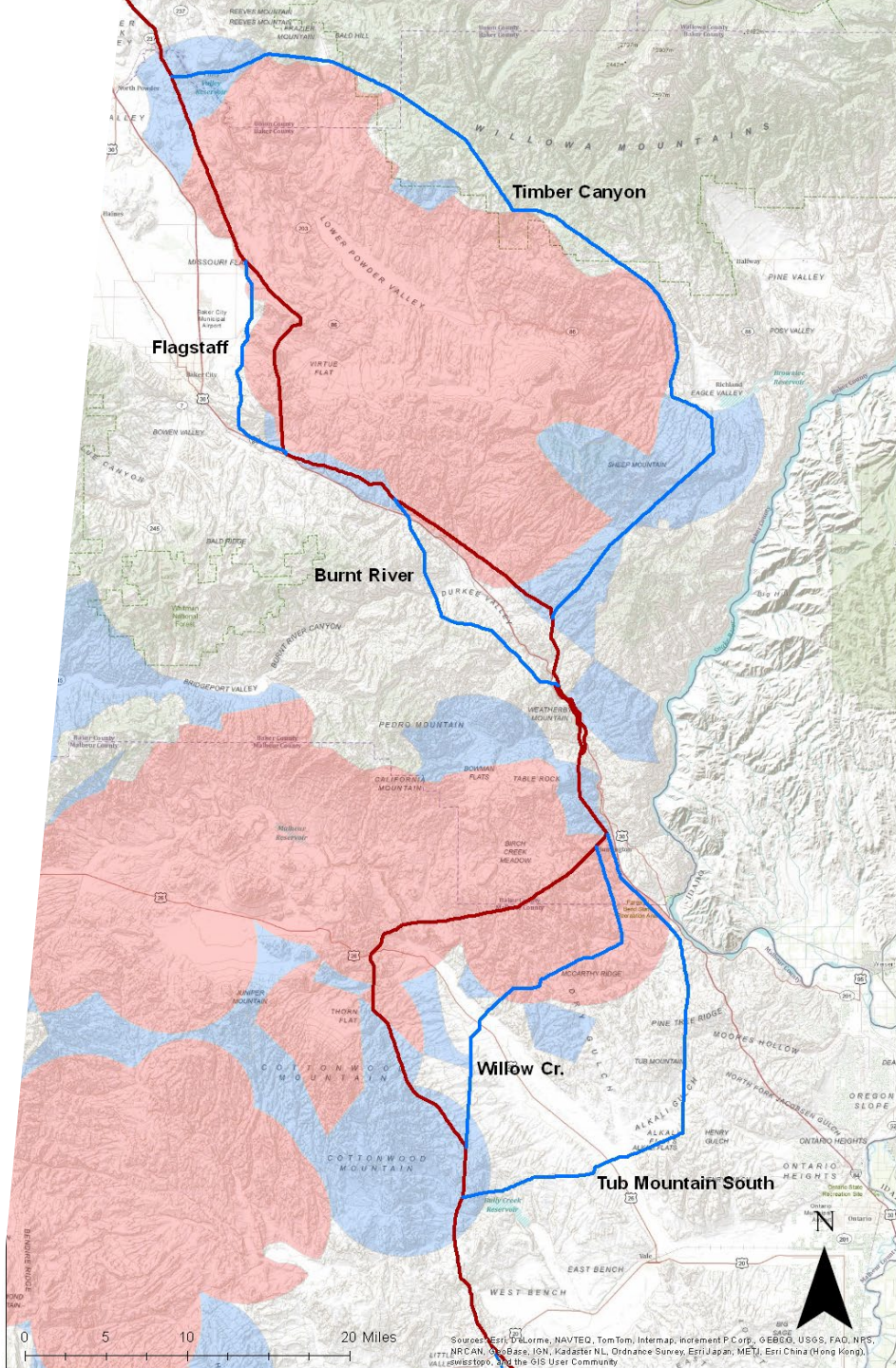
Net  
Benefit

Responsible  
Development

Promote  
Ecosystem  
Health

Coordinate  
Across  
Permit  
Processes

Coordinate  
Across  
Land  
Ownership





# Best Management Practices



Translocation



Trapping & Marking



Harvest



Captive Rearing

# Completing the CAAS

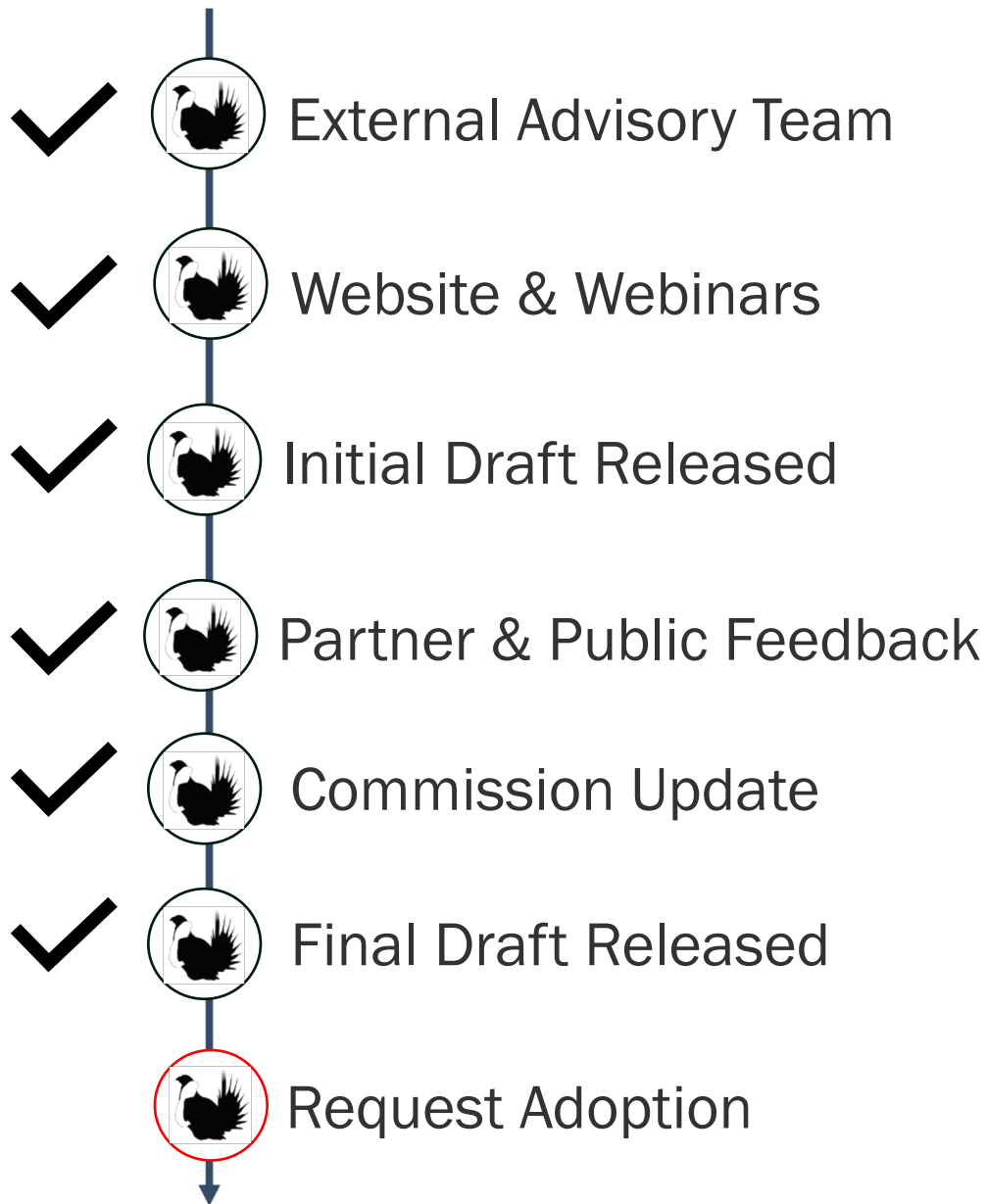


Photo by Keith Kohl



# Comments & Input



U.S. DEPARTMENT OF THE INTERIOR  
**BUREAU OF LAND  
MANAGEMENT**



**AOC**  
ASSOCIATION OF  
OREGON COUNTIES



**Agricultural  
Research  
Service**



**SAGE CON  
PARTNERSHIP**



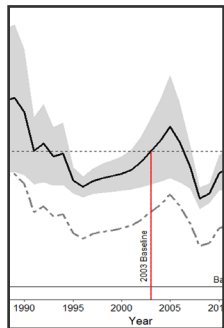


# Comments & Input

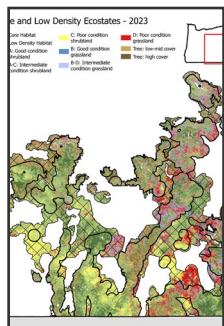




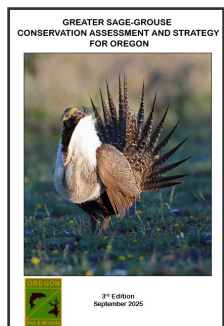
# Adopting the Plan



Population  
Objectives at State  
and PAC-level



Habitat Objectives &  
Ecostates Definitions



Section 9 Summary  
& Recommendations

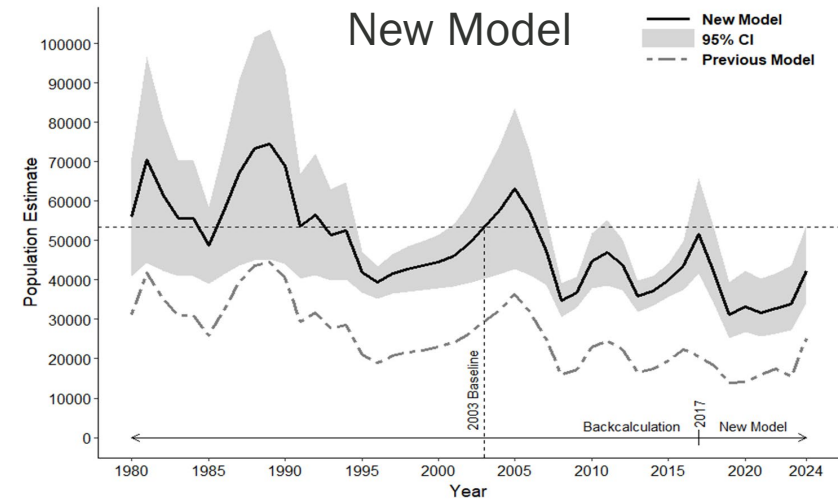


Photo by Keith Kohl

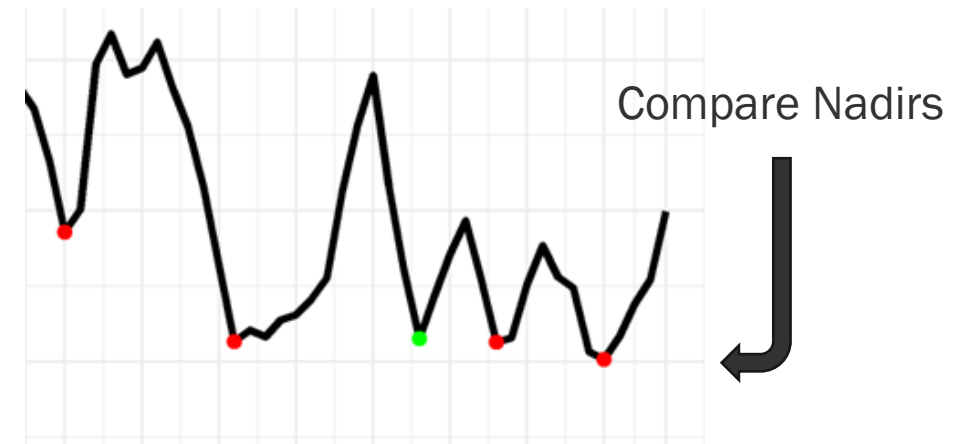


# Update Population Objective in OAR

- Manage sage-grouse to maintain or enhance their statewide distribution and abundance oscillating around the 2003 population level, ~53,000 birds.



- Manage populations to maintain stable or increasing population trends statewide and at the PAC-scale.





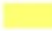







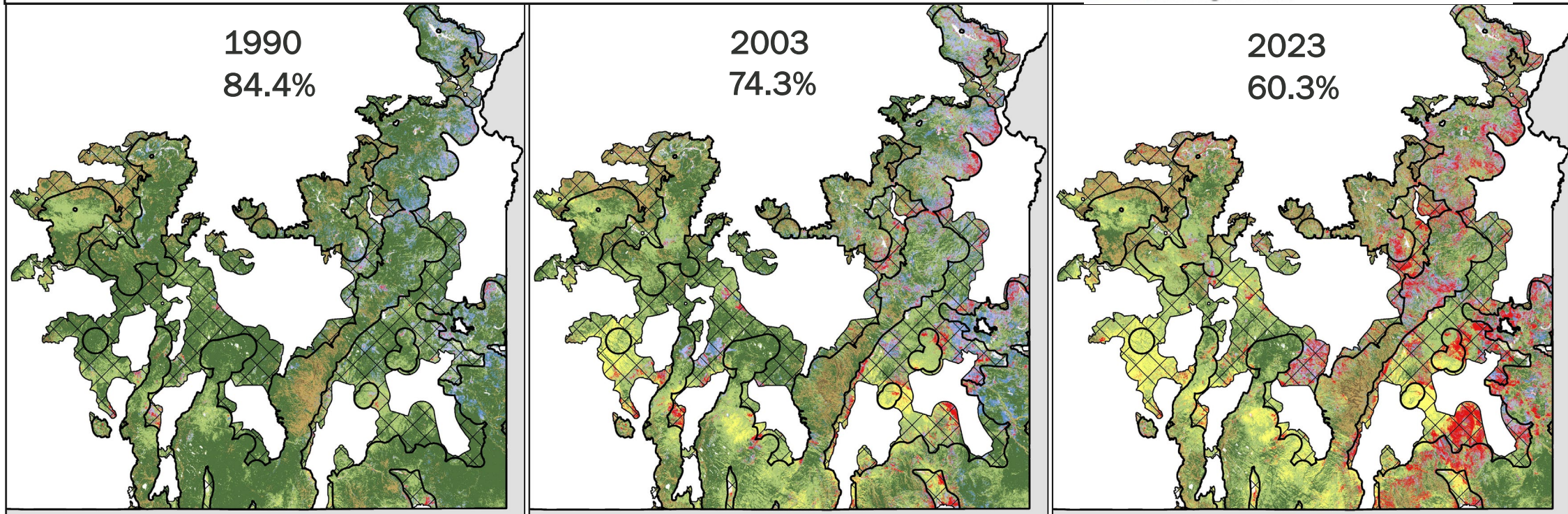
# New Habitat Objectives in OAR

Minimum of 70% sagebrush habitat in Ecostates:

- A (good condition shrubland),
- B (good condition grassland), and
- A-C (intermediate condition shrubland) at both the statewide and PAC levels.

## Ecostate Categories

- \*  A: Good condition shrubland
- \*  A-C: Intermediate condition shrubland
-  C: Poor condition grassland
- \*  B: Good condition grassland
-  B-D: Intermediate condition grassland
-  D: Poor condition grassland
-  Tree: low-mid cover
-  Tree: high cover





# Section 9: Summary & Recommendations

---

ODFW Responsibilities

---

Science & Threats

---

Population Monitoring

---

Mapping

---

Habitat Monitoring

---

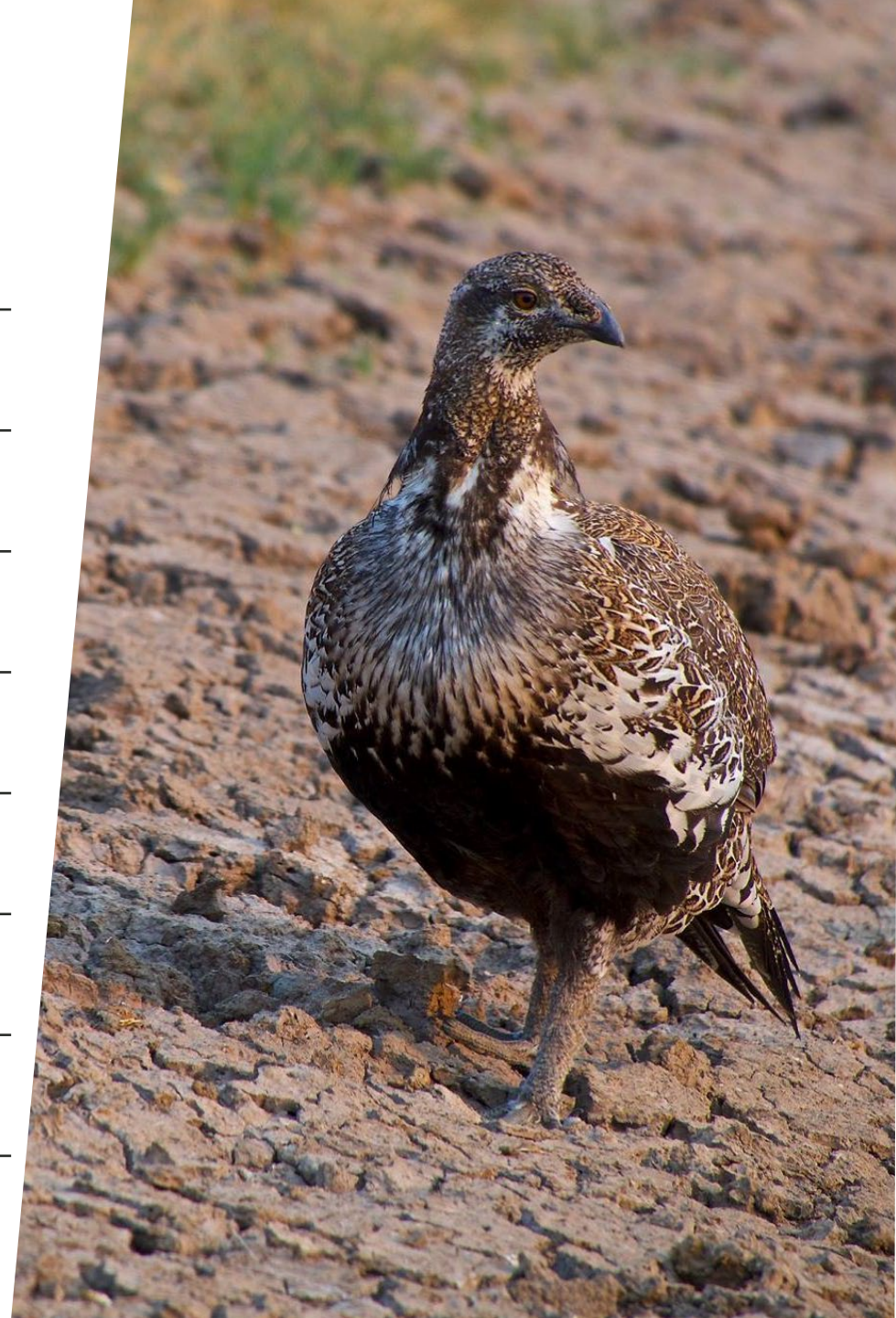
Cooperation & Collaboration

---

Mitigation

---

Harvest, handling, translocation



# Staff Recommendation

**Amend OAR Chapter 635,  
Division 140 as proposed by  
staff and shown in  
Attachment 3.**



**Oregon Department  
of Fish and Wildlife**

