



Oregon Fish and Wildlife Commission

Fish and Wildlife Commission Tour:
Thursday, September 11, 2025, 8:00 AM
Holiday Inn Express Ontario
212 SE 10th St.
Ontario, OR 97314

Meeting:
Friday September 12, 2025, 8:00 AM
Four Rivers Cultural Center
767 SW 5th Ave.
Ontario, OR 97314

Thursday September 11, 2025

All times are Mountain Daylight Time

MAXIMIZING RESILIENCY OF SAGE-STEPPE HABITAT IN THE FACE OF INCREASING FIRE FREQUENCY

The tour will focus on sage-steppe habitat and the primary habitat threats of fire and conversion to invasive annual grasses. The tour will include stops at intact sage steppe, sites recently impacted by fire but on a path for recovery and end at an older fire impacted site that has near complete conversion to non-native habitat. Staff and partners will discuss fire impacts to sage-grouse and other species and highlight efforts to prioritize post fire restoration actions.

[MAP](#)

8:00 - 8:25 AM WELCOME AND TOUR OVERVIEW

Tucker Freeman-District Wildlife Biologist

9:30 AM PRE-FIRE LANDSCAPE

Location: 44.266631 x -117.83226

Discussion of intact sage-steppe habitat and sage grouse, actions to maintain resilience, and use of remote sensed data to assess ecostates.

Skyler Vold, Sage Grouse Conservation Coordinator

10:00 AM POST FIRE RECOVERY- WORKING IN PRIORITY AREAS TO MAXIMIZE CONSERVATION OUTCOMES

Location: 44.26633 x -117.69242.

Cow Valley and Durkee Fire Overview, Fire impacts in sage-steppe, restoration concepts, prioritization tools. Site specific restoration actions.

Dustin Johnson OSU Experiment Station,

Andrew Shields Terra West,

Tom Segal-ODFW Regional habitat Biologist,

Kaly Adkins ODFW Regional Diversity Biologist,

12:00 PM LUNCH 3-Creeks Ranch HQ

Location: 44.28624 x -117.72924

Training the next generation of biologists.

Dave Banks, District Fish Biologist

Marcus Nichols, Treasure Valley Community College

Mitigation Banking Overview

Greg Jackle, Sage Grouse Mitigation Coordinator

Andrew Shields and Nathan Ayers Terra West Conservancy-

2:30 POST FIRE-LOW RESISTANCE AND RESILIENCE LANDSCAPE

Location: Henry Gulch 44.04328 x -117.14727

Fire impact in low R&R site, complete conversion to non-native habitat.

Skyler Vold-Sage Grouse Conservation Coordinator

Tucker Freeman-District Wildlife Biologist

Oregon Fish and Wildlife Commission

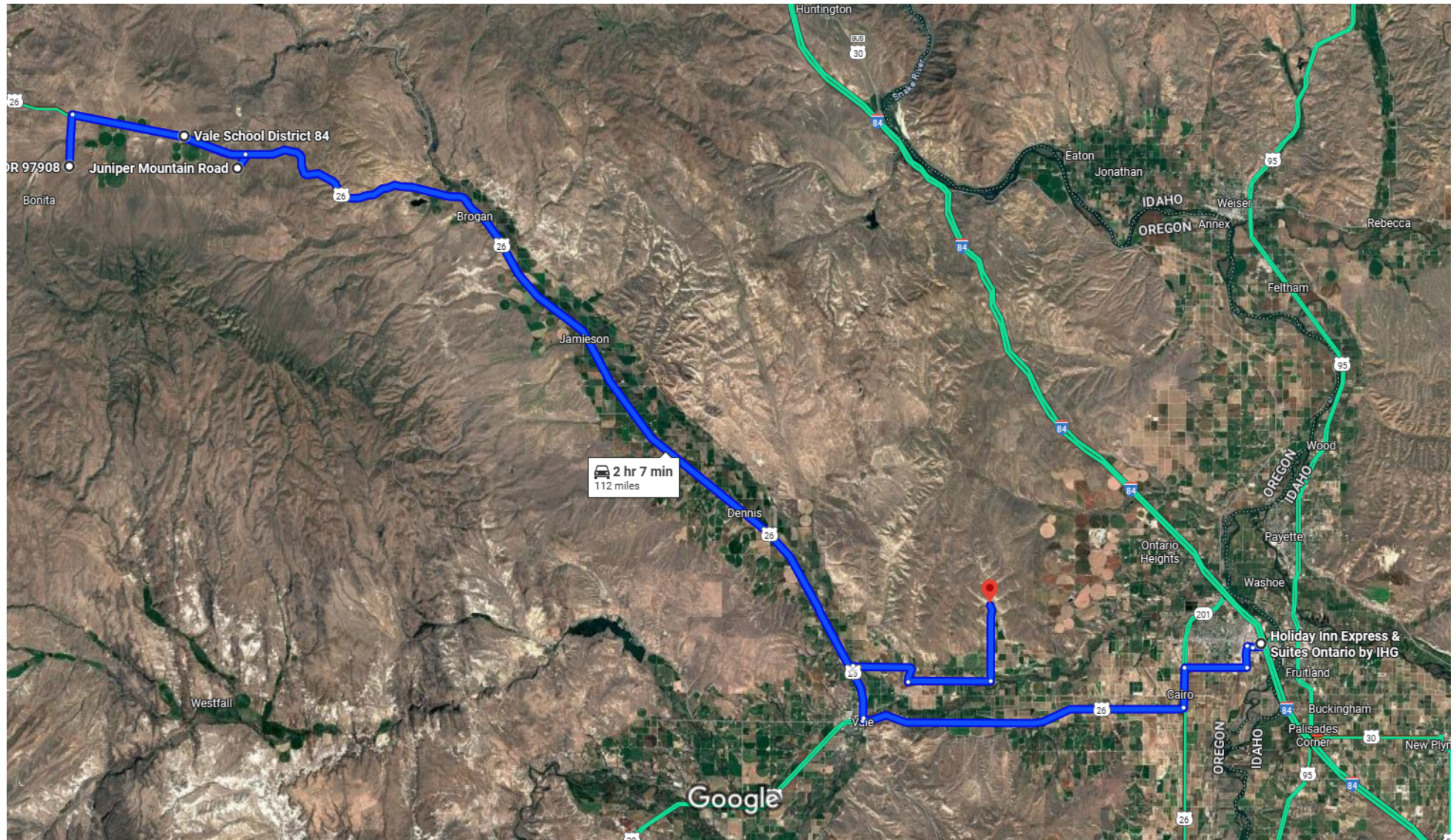
Thursday September 11, 2025

Page 1



Holiday Inn Express & Suites Ontario by IHG, 212 SE 10th St,
Ontario, OR 97914 to Vale, Oregon 97918

Drive 112 miles, 2 hr 7 min



Map data ©2025, Map data ©2025 Google 2 mi

Live traffic ▼

Fast ■ ■ ■ ■ Slow