



# CTUIR DNR First Foods and Management Visions

## Oregon Fish & Wildlife Commission

10.10.25

Eric J. Quaempts, Natural Resources Director  
Confederated Tribes of the Umatilla Indian Reservation


1



### Presentation Goals

1. Illustrate the ecological and spatial information inherent in a First Foods serving ritual.
2. Demonstrate the value of target visions in applied restoration & management.
3. Call out the need for “reciprocity” as a requisite to sustainability.
4. Demonstrate transferability of visions and opportunities for collaboration.

2



**ABORIGINAL TITLE LANDS**  
Confederated Tribes of the Umatilla Indian Reservation

**Confederated Tribes of the Umatilla Indian Reservation**

**Treaty of 1855**

Confederation of:  
Umatilla;  
Walla Walla; and  
Cayuse.

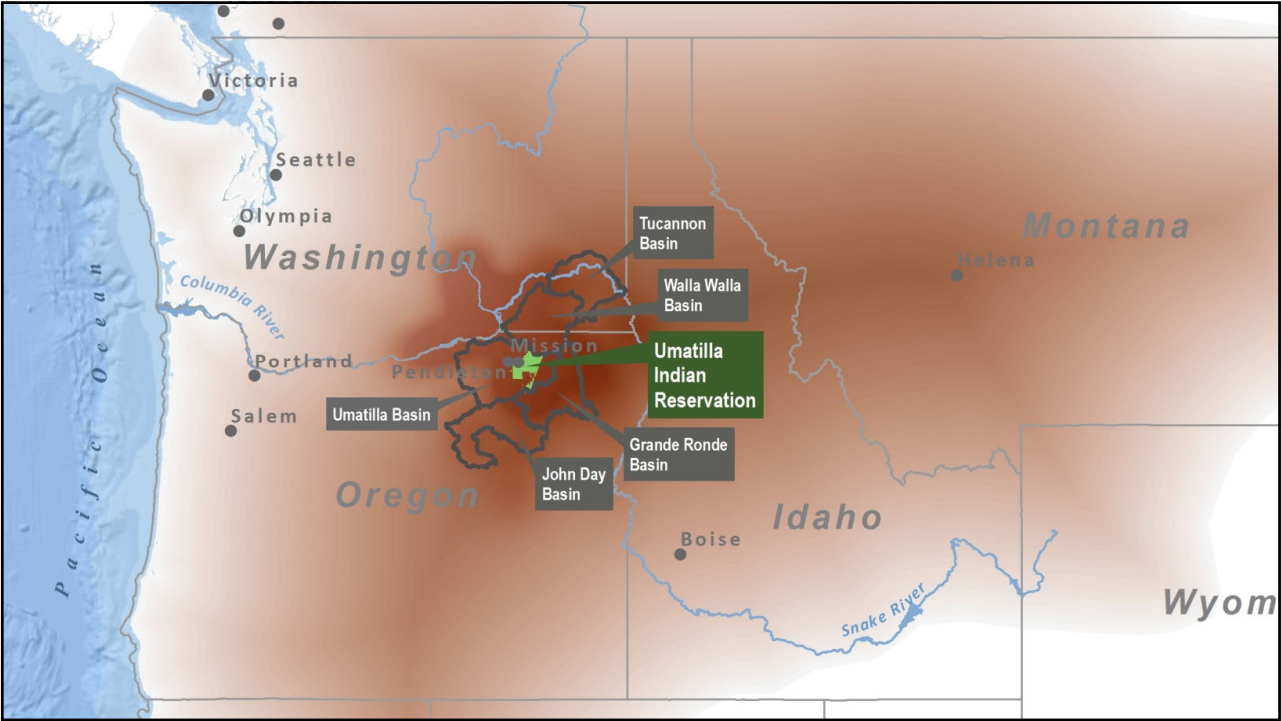
6.4 million acre Ceded Lands

UIR Land Base  
1859 Survey - 254,699 acres  
Dawes Allotment Act: 158,000

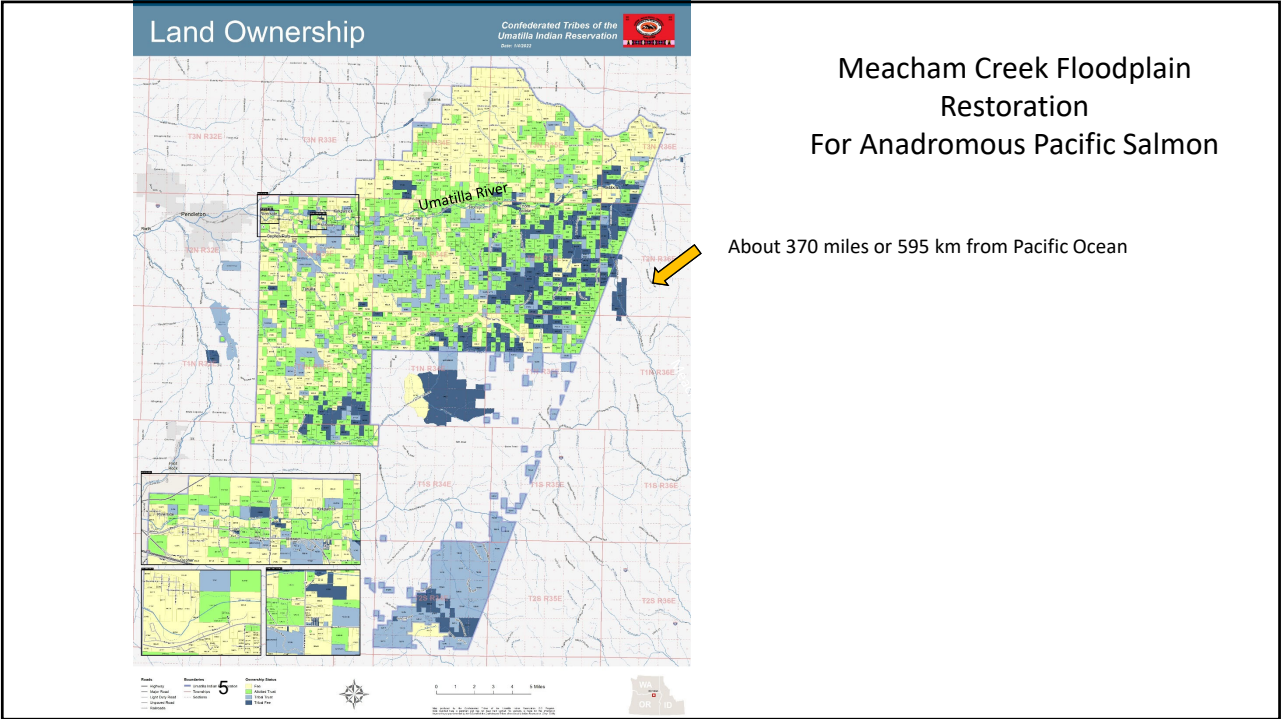
Restoration: 172,000  
“checkerboard” ownership

Currently about 3,100+ members

3



4



5



First Foods Mission

To protect, restore, and enhance the First Foods - water, salmon, deer, xaws, and huckleberry - for the perpetual cultural, economic, and sovereign benefit of the CTUIR.

We will accomplish utilizing traditional ecological and cultural knowledge and science to inform:

1) population and habitat management goals and actions; and

2) natural resource policies and regulatory mechanisms.

6

DNR

3

# Community Values & Engagement



*"We need cold, clear, pure water and salmon."*  
- átway Louie Dick, CTUIR Member, 1981-82, 1988-89

*"You're always talking about the men's foods.  
Who is going to take care of the women's foods?"*  
- Marie "Butch" Dick, CTUIR Member and wife of Louie,  
1988-89



7

# First Foods Serving Order Example

Cúuś  
Water

Núsux  
Salmon

Yáamaś  
Deer

Xáwś  
"Coush"

Wíwnu  
Huckleberry

9

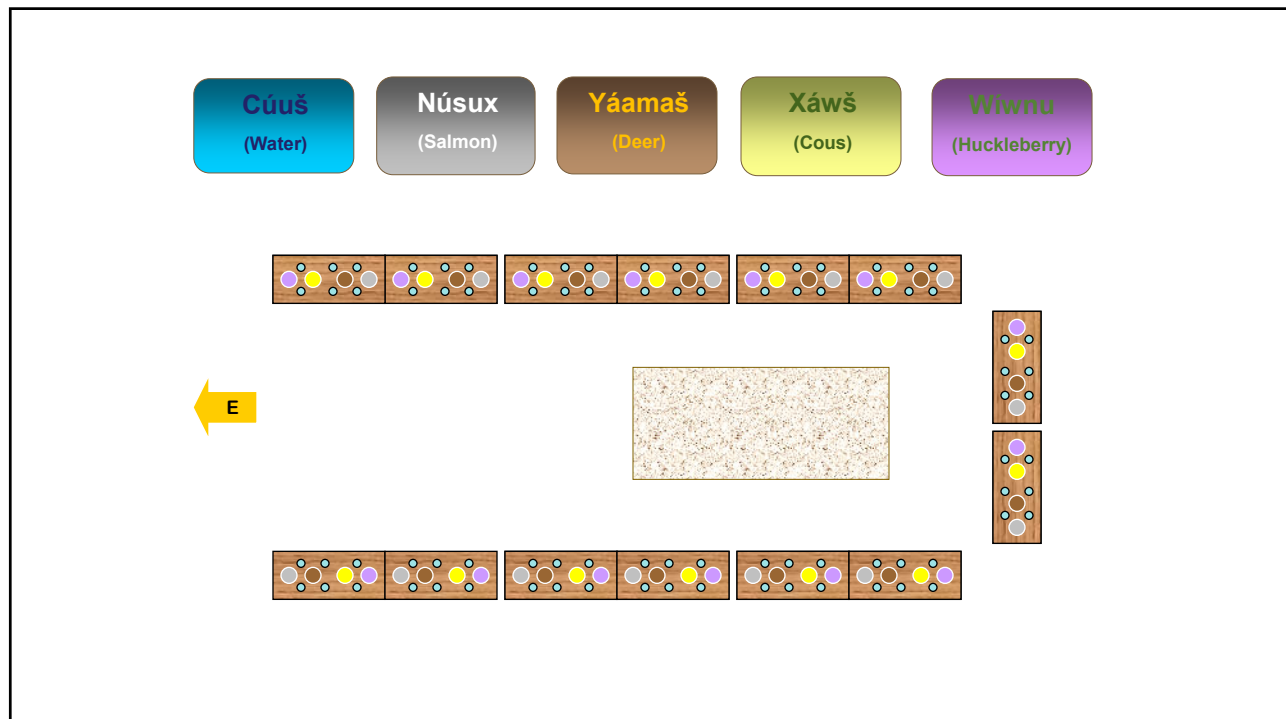


1	2	3	4	5
<b>Cúuś</b> Water	<b>Núsux</b> Chinook Coho Sockeye Lamprey Steelhead Trout Whitefish Suckers Sturgeon Smelt Mussels	<b>Yáamaś</b> Mule Deer RM Elk WT Deer Bison Bighorn Mtn Goat Antelope Moose	<b>Xáwś</b> Celery Bitterroot Luksh Púla Máamin Panku Yellow Bell Mariposa Lilly Indian Carrot Camas Wapto Black Moss	<b>Wíwnu</b> Huckleberry Chokecherry Service Berry Strawberry Black Current Golden Current Red Current Mt. Black Berry Thimble berry Hawthorn Mt. Elderberry Blue Elderberry

Men's Foods

Women's Foods

10



13

### First Foods Feasts



14

### Ecology – Between & Among Foods, People

1

Cúuś

Water

2

Núsux

Chinook

Coho

Sockeye

Lamprey

Steelhead

Trout

Whitefish

Suckers

Sturgeon

Smelt

Mussels

3

Yáamaš

Mule Deer

RM Elk

WT Deer

Bison

Bighorn

Mtn Goat

Antelope

Moose

4

Xáwš

Celery

Bitterroot

Luksh

Púla

Máamin

Panku

Yellow Bell

Mariposa Lilly

Indian Carrot

Camas

Wapto

Black Moss

5

Wíwnu

Huckleberry

Chokecherry

Service Berry

Strawberry

Black Current

Golden Current

Red Current

Mt. Black Berry

Thimble berry

Hawthorn

Mt. Elderberry

Blue Elderberry

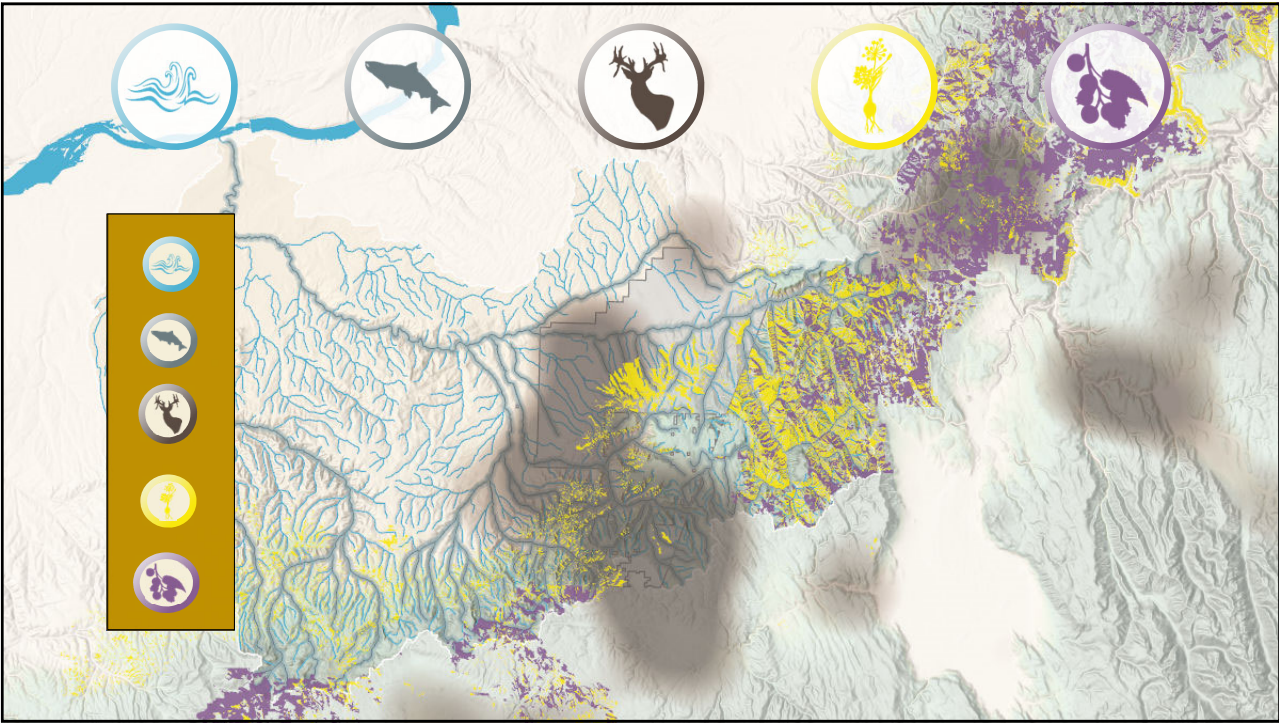
Cúuś

Water

Men's Foods

Women's Foods

15



21

# Community Feasts

Winter Solstice  
Celery Feast: February  
Salmon Feasts: April, Celilo, Columbia River  
Root Feasts: April – May  
Huckleberry Feasts: July – August

Regular Services  
Funerals  
Memorials  
Namings

22



### Community Celebrations



**Celebrations/War Dances**  
New Years Celebration  
Root Feast Pow-Wow  
Treaty Day Celebration  
4<sup>th</sup> of July  
Round Up



**Men's Round Bustle**  
Sometimes First Kill Ceremony Requirement



**Women's Basket Hat**  
(Buckskin Dresses)  
Sometimes First Digging/Picking

24

### Individual Ceremonies

**Men's Foods**  
First Salmon  
First Kill

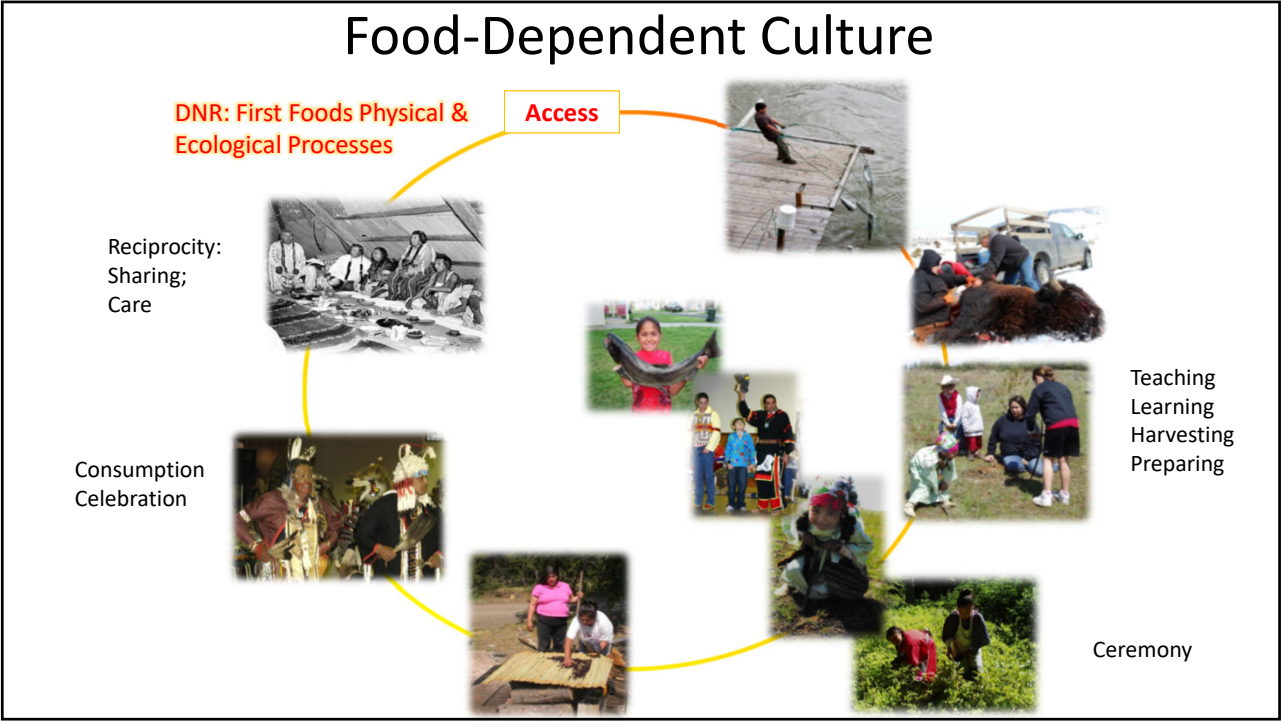




**Women's Foods**  
First Digging  
First Picking

25





26



27

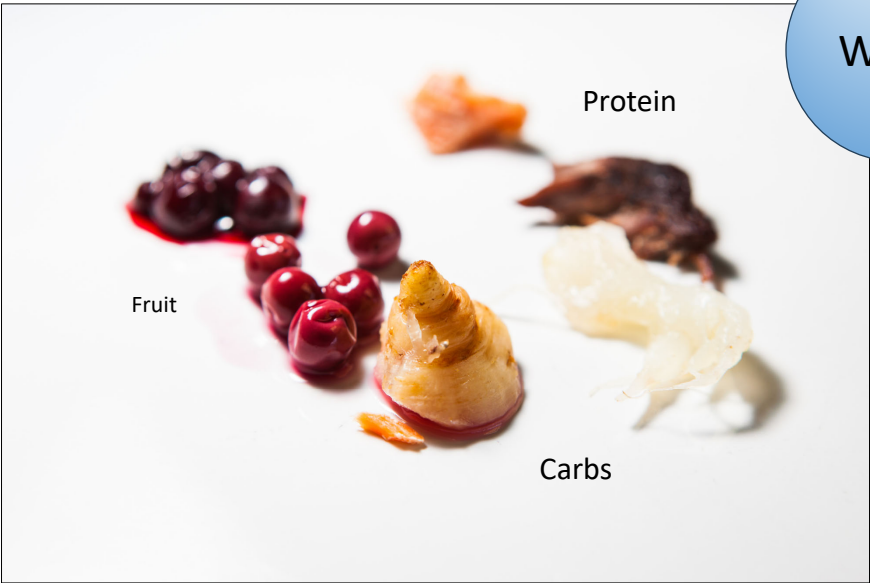
### Diet – Example Serving



Water

30

### Diet – Example Serving



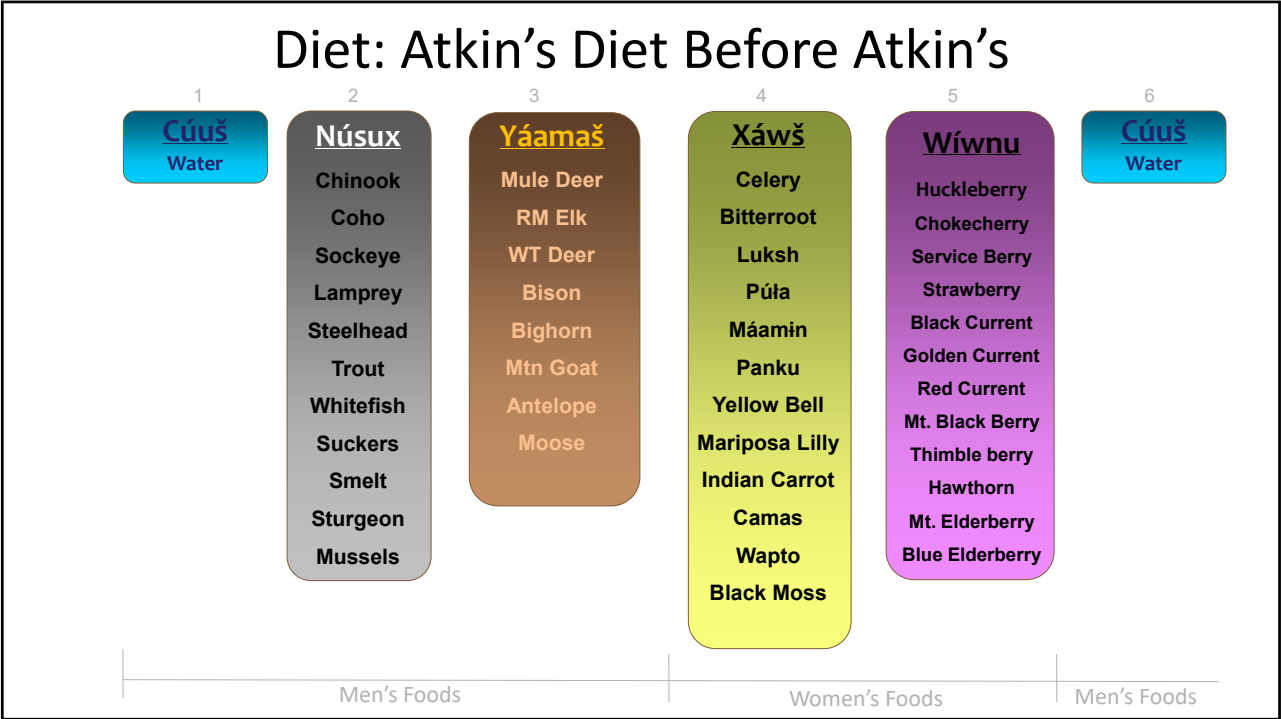
Water

Fruit

Protein

Carbs

31



32

### Treaty of 1855, Article 1

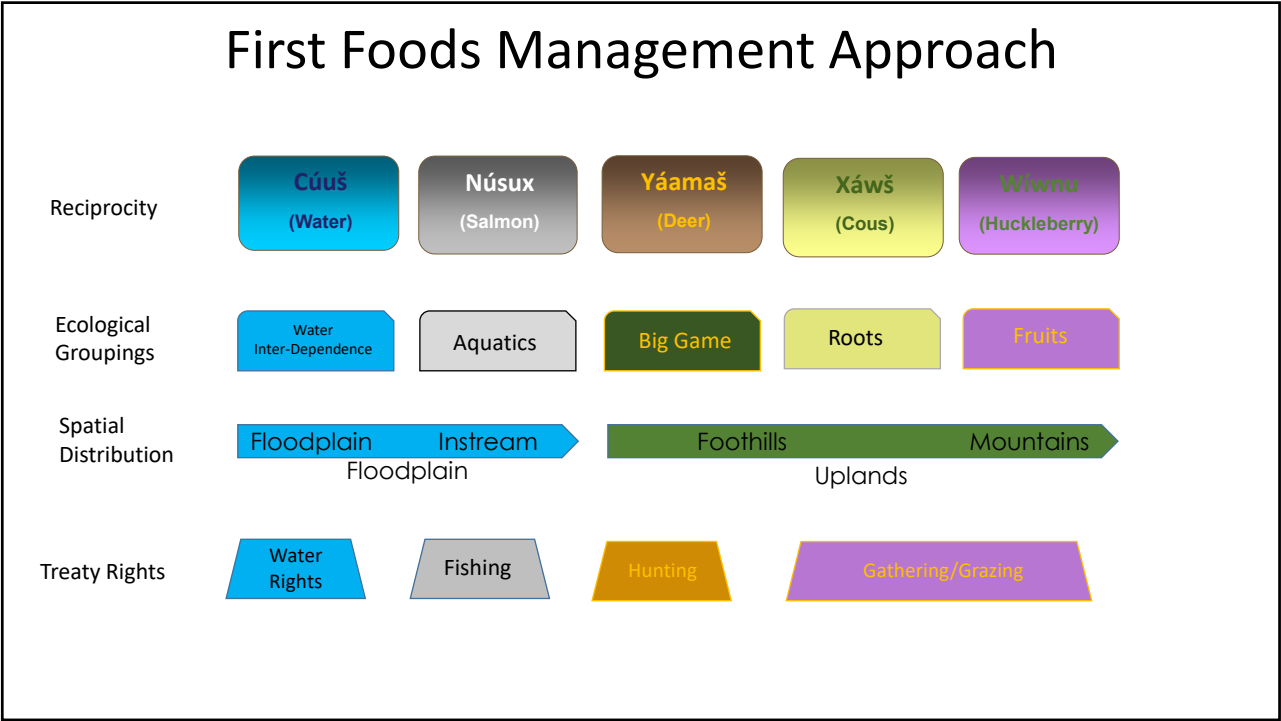
....Provided, also, that the exclusive right of taking fish in the streams running through and bordering said reservation is hereby secured to said Indians, and at all other usual and accustomed stations in common with citizens of the United States, and of erecting suitable buildings for curing the same; the privilege of hunting, gathering roots and berries and pasturing their stock on unclaimed lands in common with citizens is also secured to them.

33

Treaty of 1855, Article 1

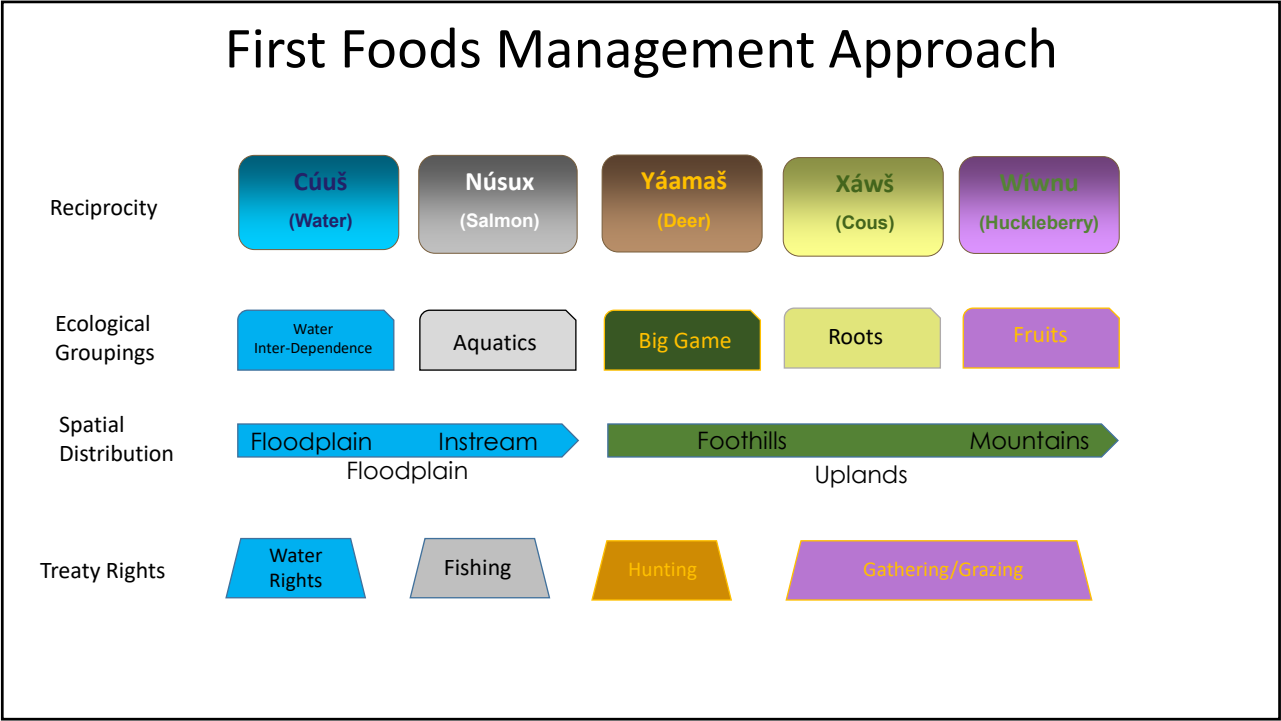
....Provided, also, that the exclusive right of **taking fish** in the streams running through and bordering said reservation is hereby secured to said Indians, and at all other usual and accustomed stations in common with citizens of the United States, and of erecting suitable buildings for curing the same; the privilege of **hunting, gathering roots and berries and pasturing their stock** on unclaimed lands in common with citizens is also secured to them.

34

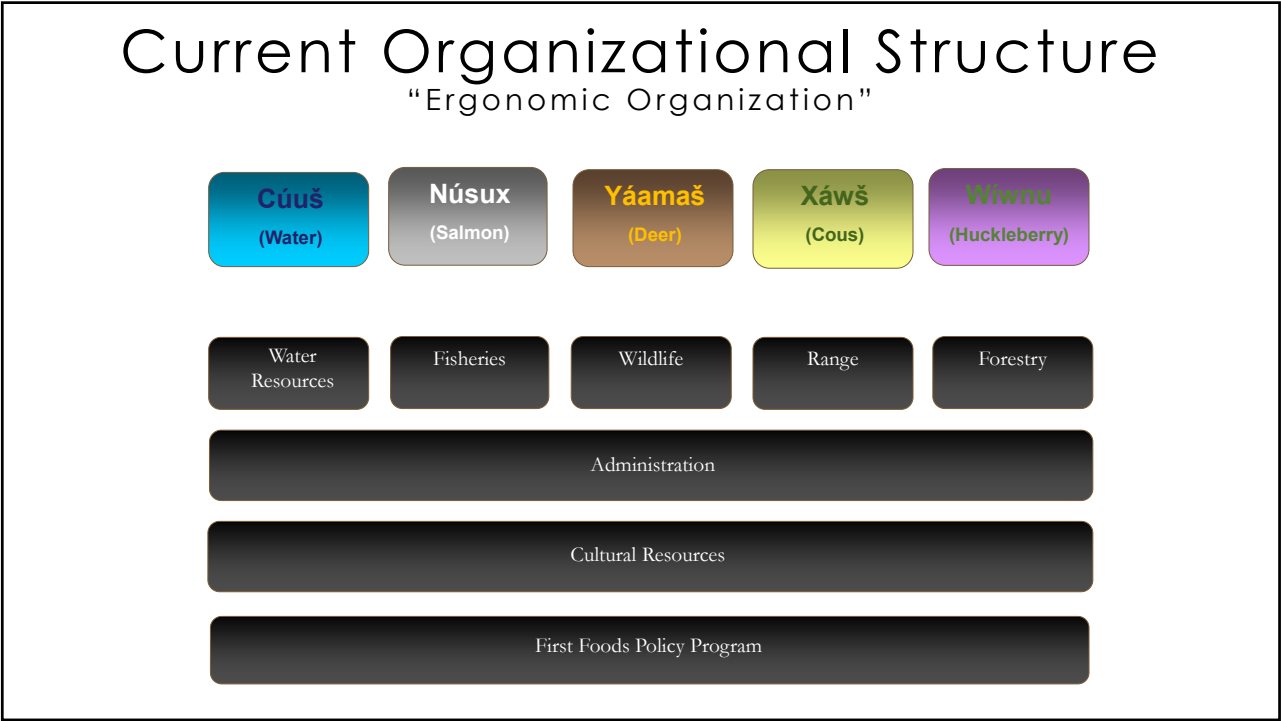


35

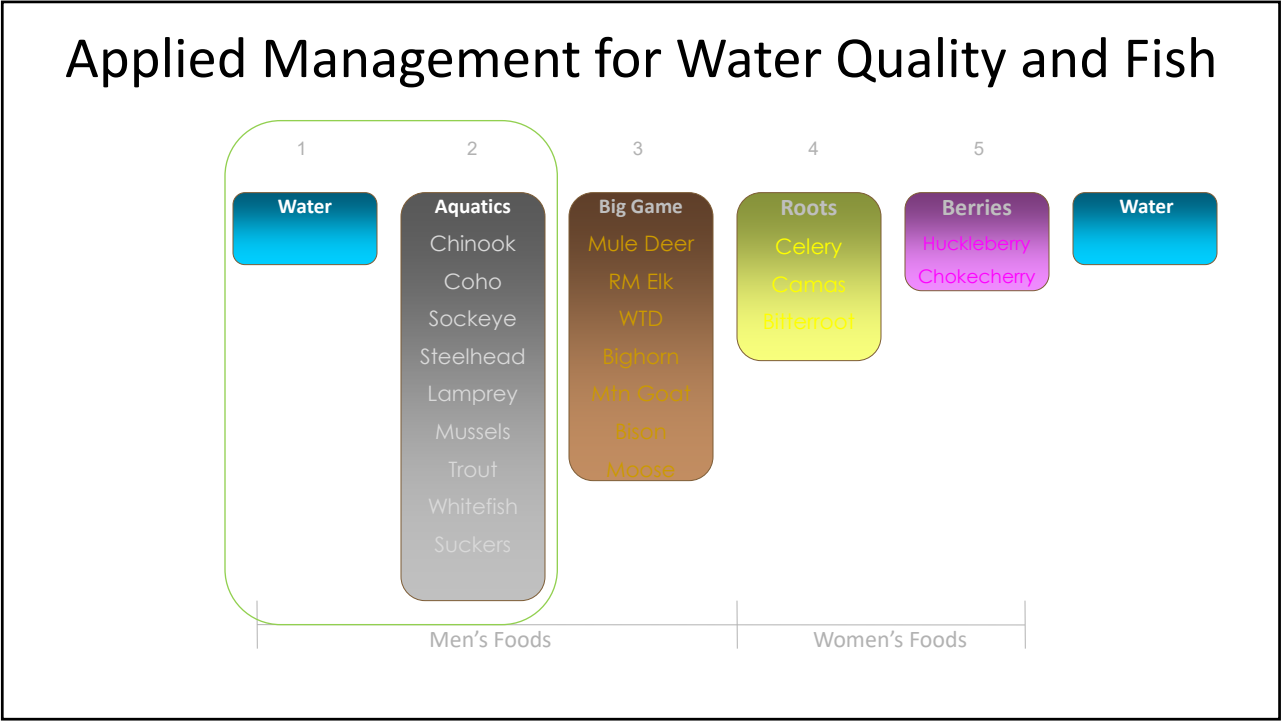




36



37



38

### The Need for a Vision

Sound river (water) management and restoration include the need to develop a systemic and holistic vision of a functional river.



A vision provides:

- 1) a framework for planning management or restoration efforts;
- 2) a benchmark for assessing management progress and outcomes; and
- 3) context necessary for understanding the role of any specific management decision or action in the context of other decisions or actions.

Jungwirth, M., S. Muhar, et al. (2002). "Re-establishing and assessing ecological integrity in riverine landscapes." Freshwater Biology 47(4): 867-888.

39


# CTUIR River Vision



...a healthy river capable of providing First Foods that sustain the continuity of the Tribe’s culture. This vision requires a river that is dynamic, and shaped not only by physical and biological processes, but the interactions and interconnections between those processes.

40


# 1. Hydrology



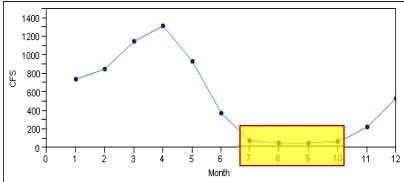
Volume and timing of water

41

1. Hydrology




Volume and timing of water



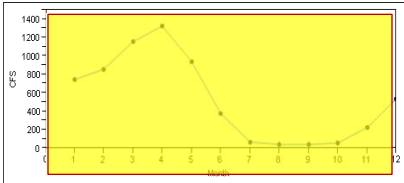
Month	Flow (cfs)
1	750
2	850
3	1150
4	1300
5	950
6	450
7	100
8	100
9	100
10	100
11	250
12	550

42

1. Hydrology



Volume and timing of water



Month	Flow (cfs)
1	750
2	850
3	1150
4	1300
5	950
6	450
7	100
8	100
9	100
10	100
11	250
12	550

43



## 2. Geomorphology



Topographically diverse, accessible by river

44

## 3. Connectivity



Longitudinal, Lateral, and Vertical

45

# 4. Riparian Vegetation



Native vegetation

46

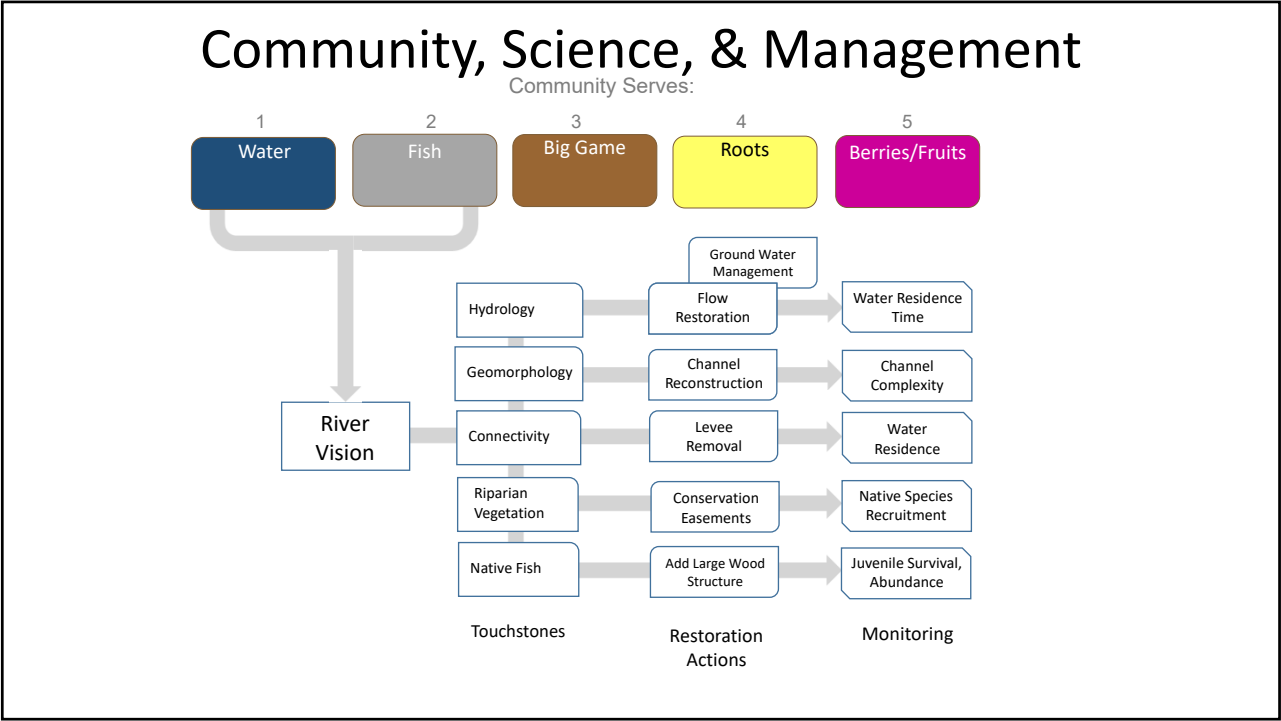
# 5. Native Biota



Diverse native Fish communities present at harvestable levels.

47

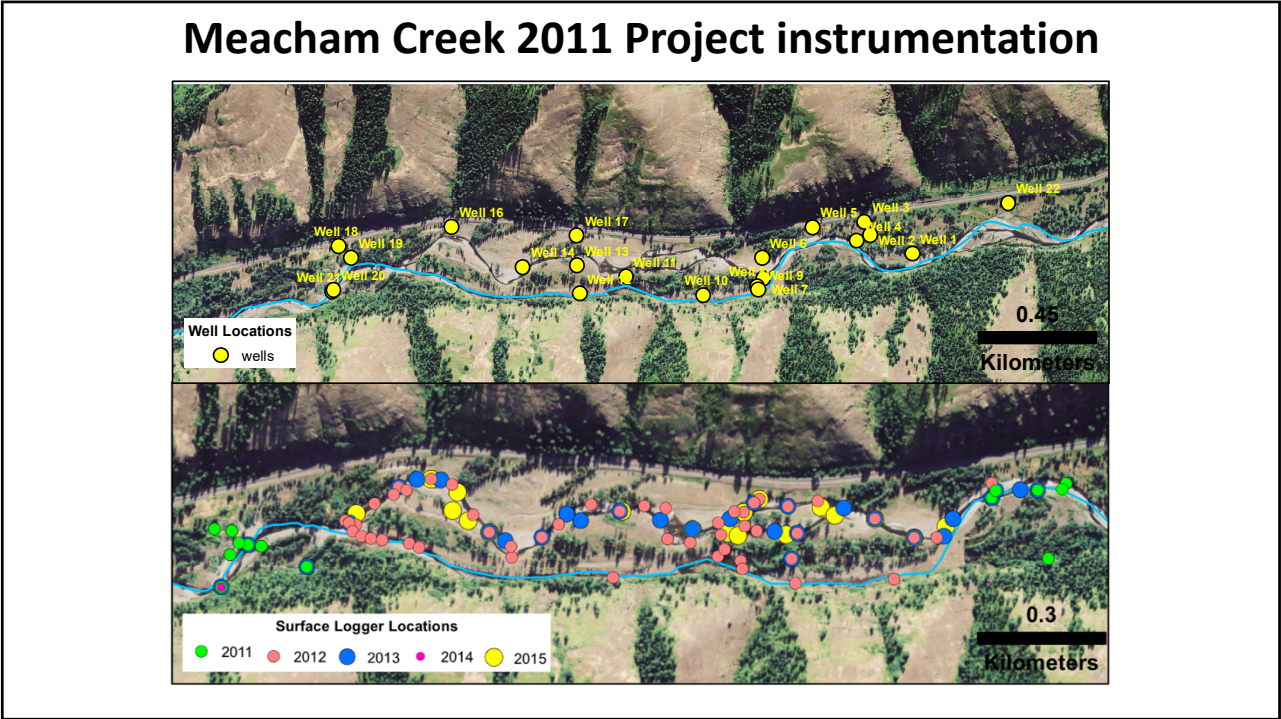




49



50



51



52





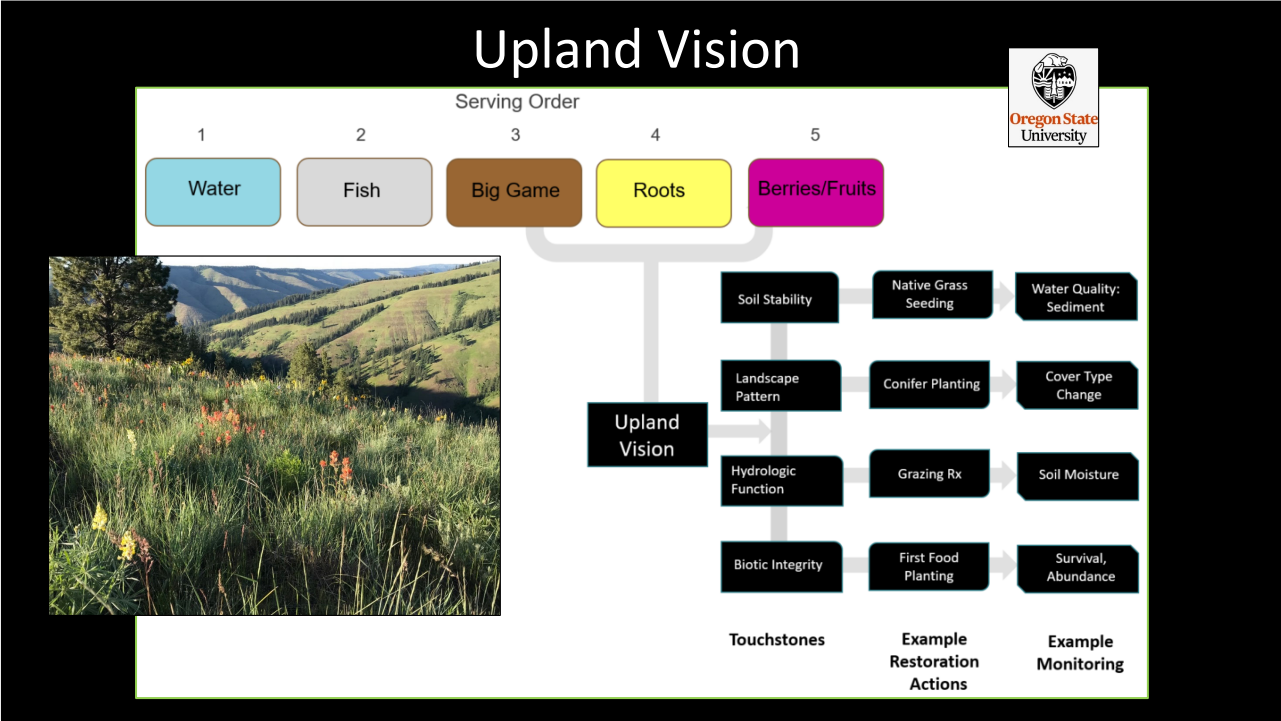
53



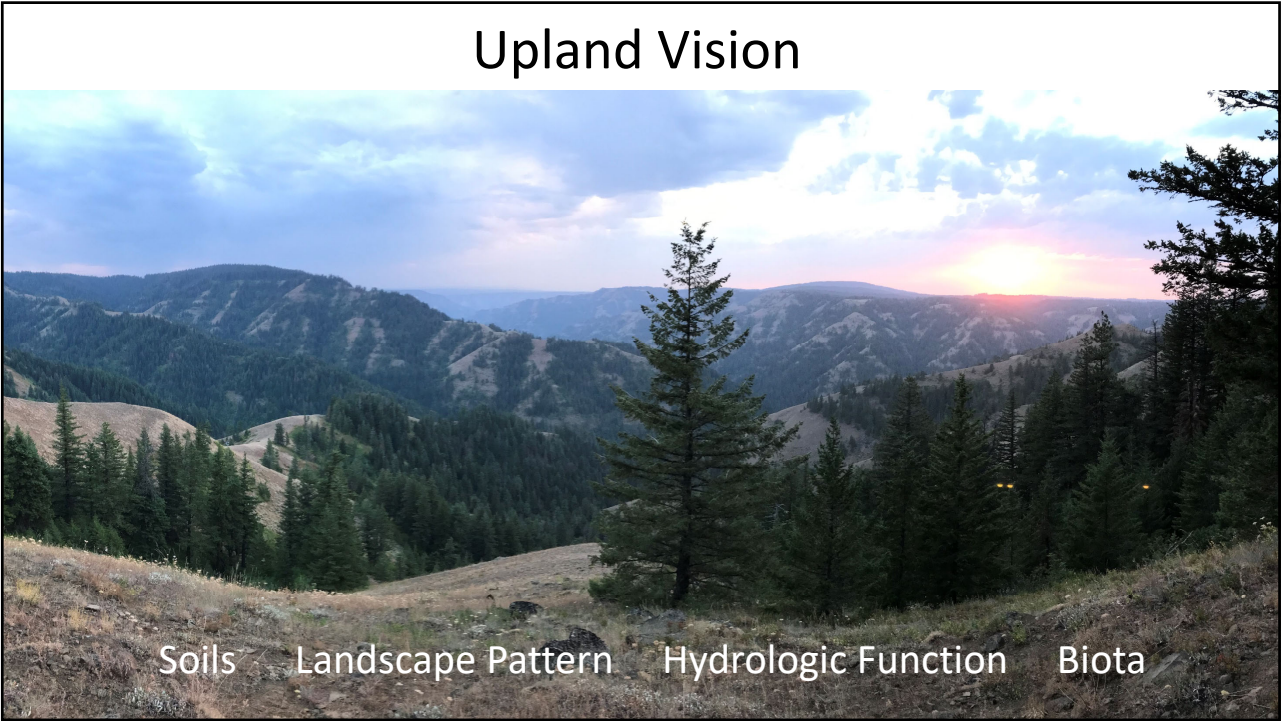
# River Vision Update - 2024

The CTUIR’s areas of rights and interests include healthy river basins capable of providing First Foods that sustain the continuity of the Tribe’s culture and protected Tribal access to these First Foods. This vision requires rivers that are dynamic and shaped not only by the physical and biological processes, but the interactions and interconnections between those processes, and mechanisms that provide Tribal access for harvesting and gathering First Foods .

54



55



56



# Forest Health - Thinning Beetle Kill



57

# Commercial Thinning



Thinning Beetle Killed Trees

Post-Project

58



# Pre-Commercial Thinning



59

# Fuels Management



Commercial: Broadcast



Pre-commercial



Fuel Break

60



# Weather Stations



61

# Pollinators

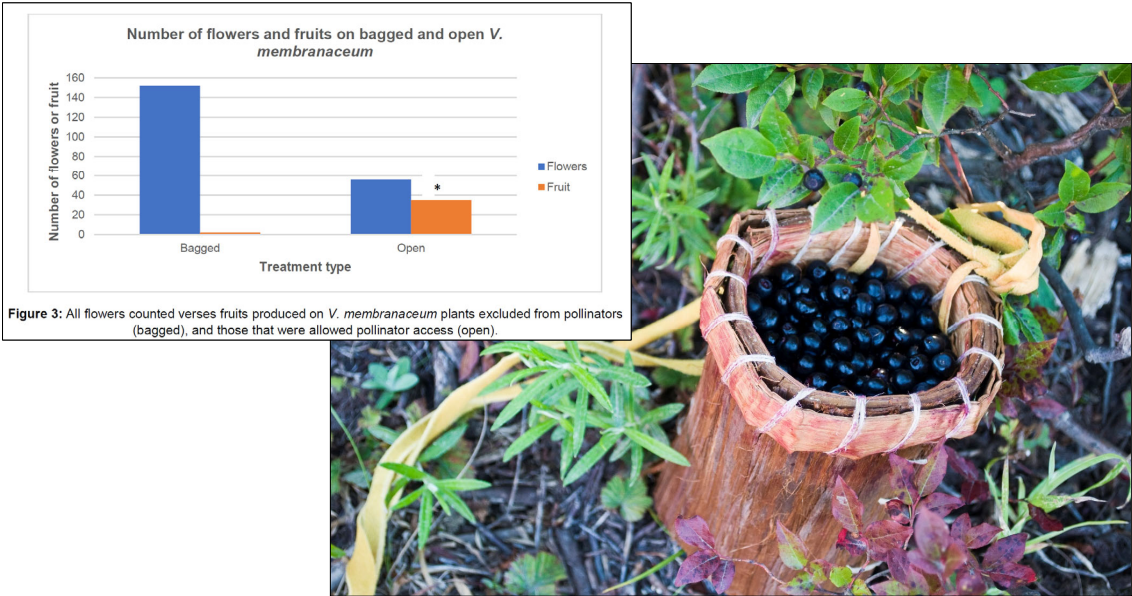
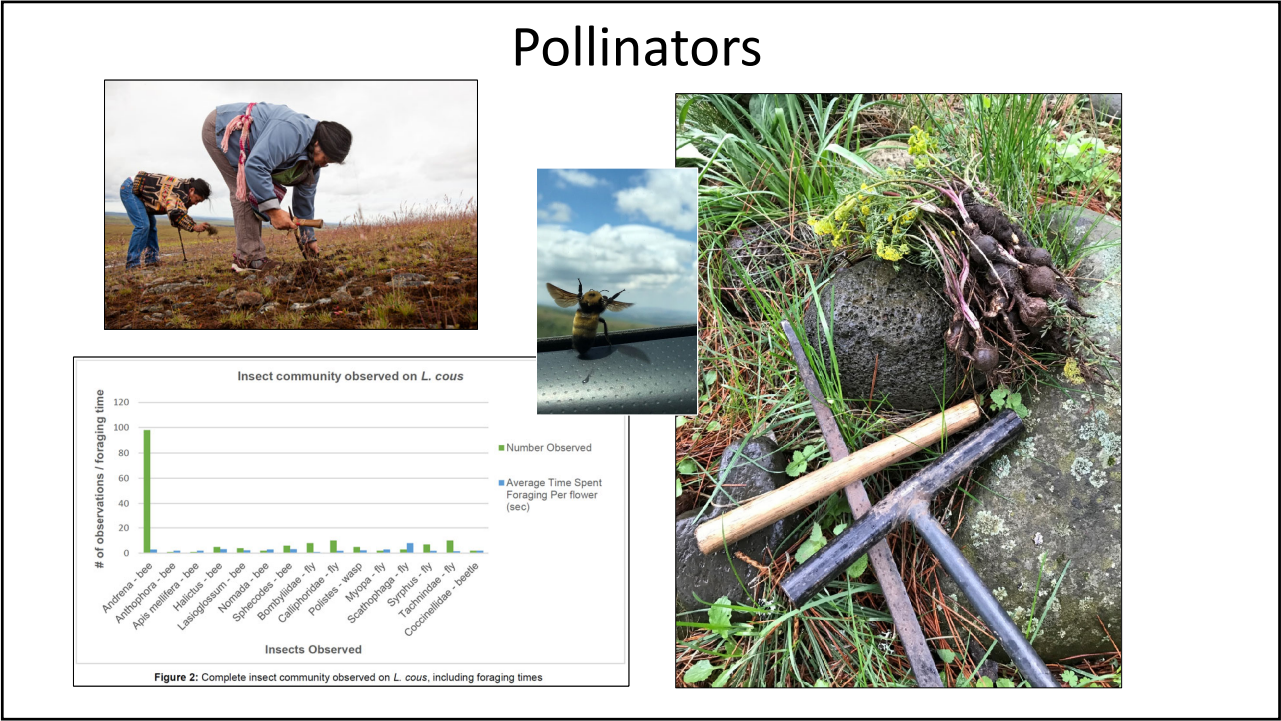
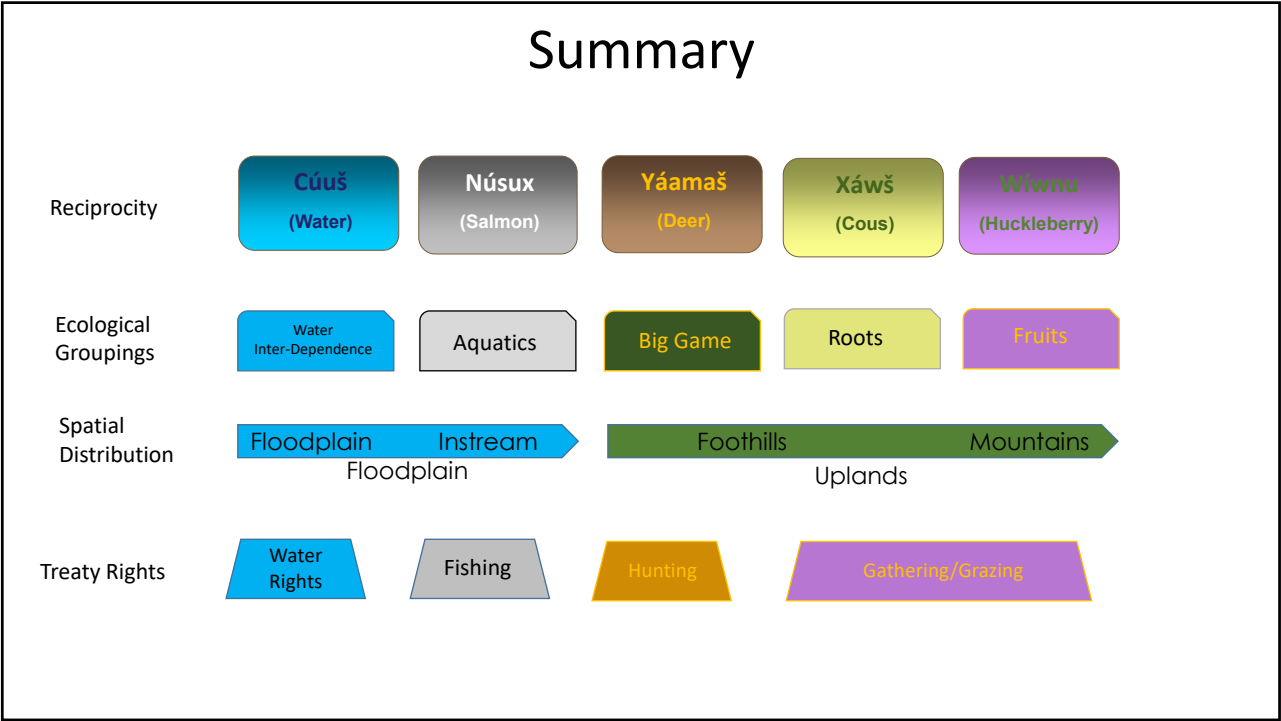


Figure 3: All flowers counted verses fruits produced on *V. membranaceum* plants excluded from pollinators (bagged), and those that were allowed pollinator access (open).

62



63



64

## Shared National Challenges

Energy and mineral development (w/emphasis on Tribal lands).

Weakening of ESA, NEPA.

Increased fossil fuel production and use.

Climate Change Impacts: Precipitation, hydrologic patterns, aeolian transport.

Persistent toxics: Air, soil, water media. Long lived species, life cycle considerations (freshwater mussels, lamprey in sediment).

65

## Shared State Challenges

Basin surface flows often over-appropriated.

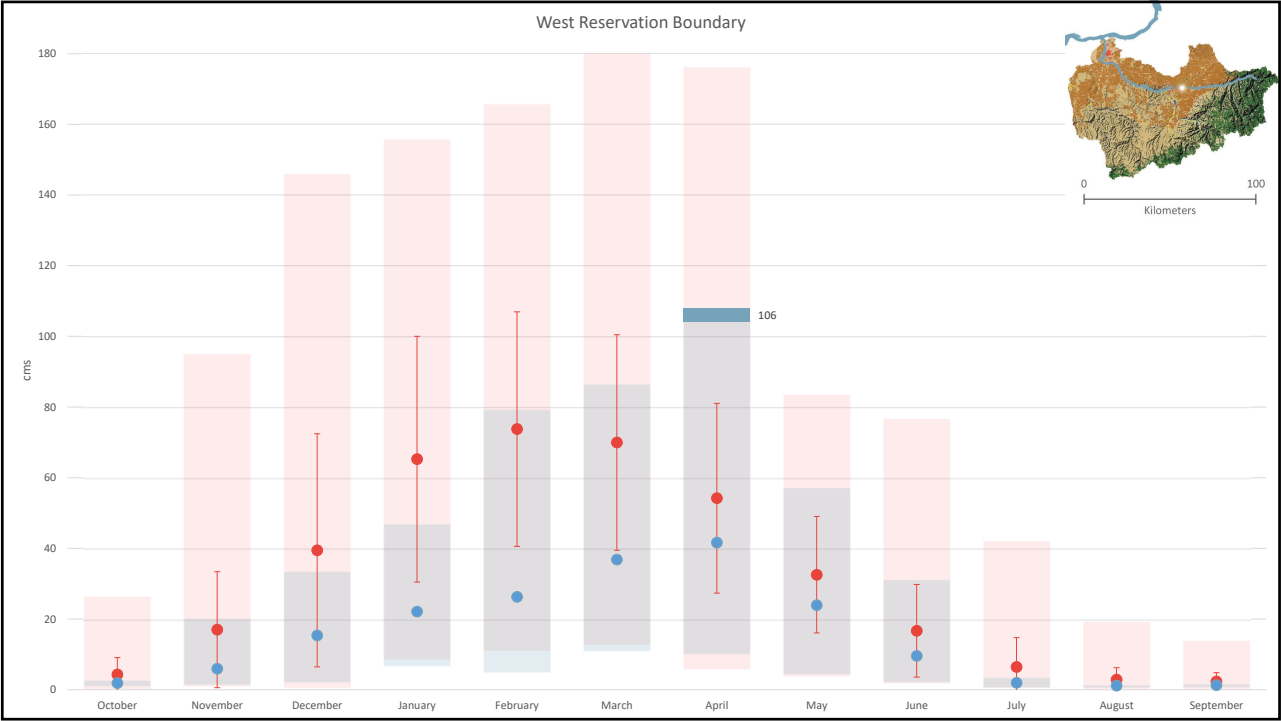
Groundwater development/over-development impacting surface flows.

Local Land Use Planning Decisions: Floodplain Development.

Climate Change Impacts: Precipitation, hydrologic patterns, flooding, aeolian transport.

Persistent toxics: Air, soil, water media. Long lived species, life cycle considerations.

66



67

## Increased Need for Collaboration and Creativity

### Columbia Basin Restoration Initiative

### Integrated Water Resources Strategy

### Umatilla Basin Water Rights Settlement, WW2050 Plan

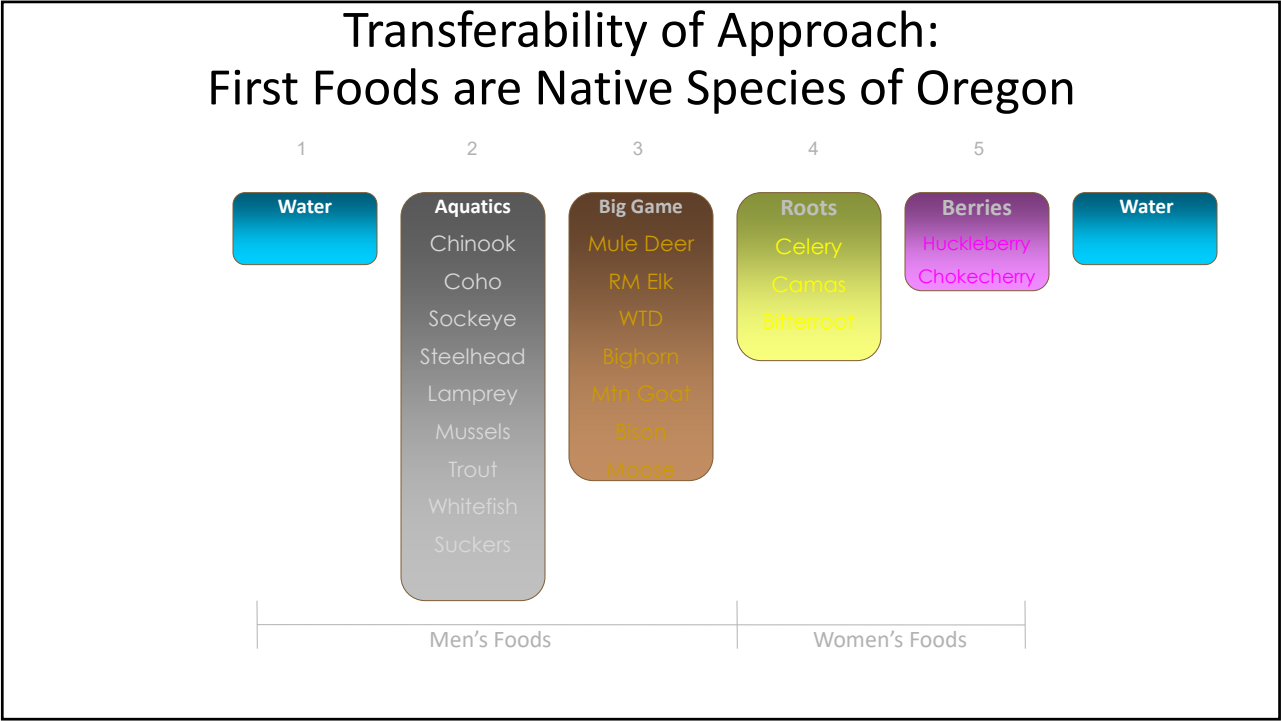
- Floodplain health.
- Flood risk management improvements.
- Instream flow improvements & protections.

### Use of Vision Touchstones by State Agencies

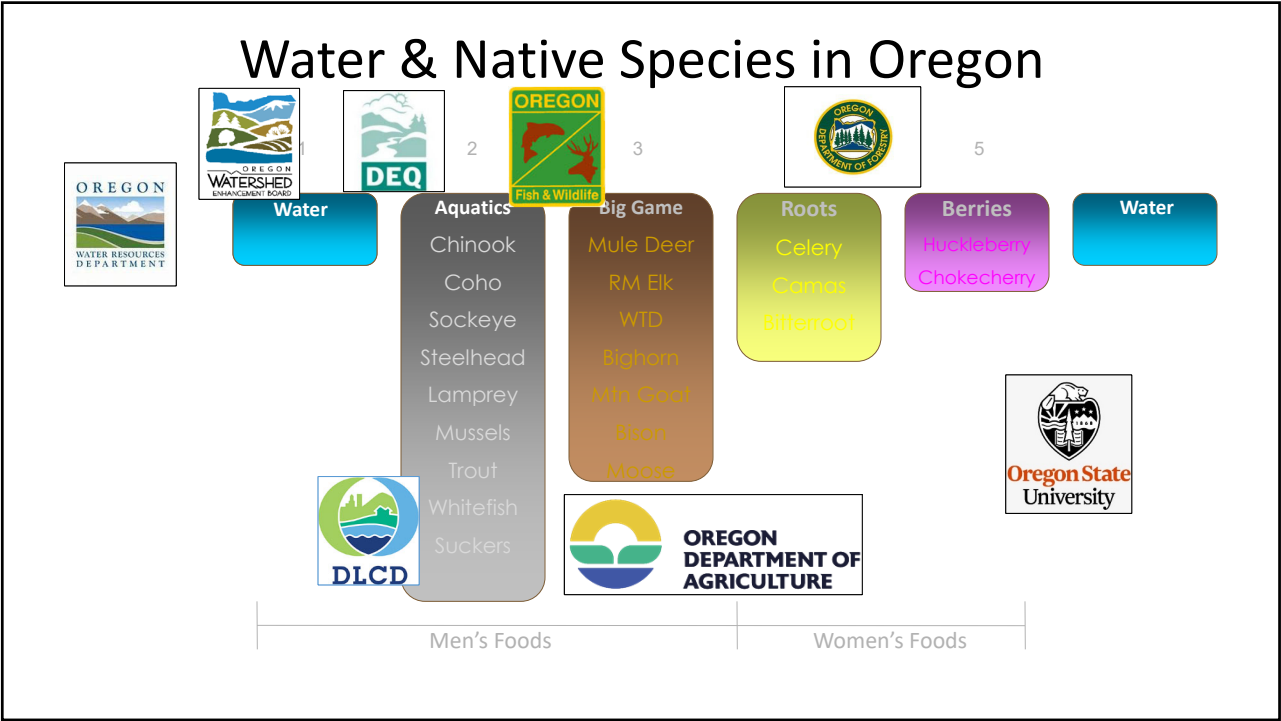
- Science based, peer reviewed publications.
- Facilitate collaboration.

68





69



70