



Lower Columbia River Conservation and Recovery Plan 12-Year Assessment

December 12, 2025

Jim Brick
Lower Columbia Implementation Coordinator

Chris Lorion
Native Fish Conservation Coordinator

Tom Stahl
Deputy Administrator Inland Fish

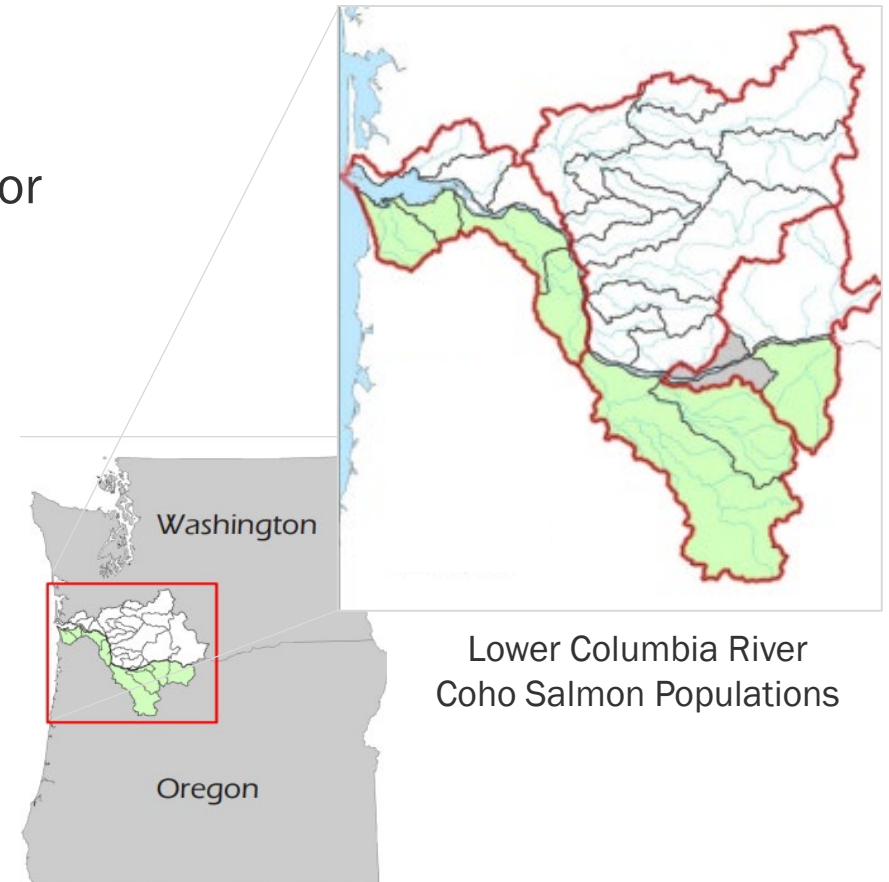


**Oregon Department
of Fish and Wildlife**



Lower Columbia River Conservation & Recovery Plan for Oregon Populations of Salmon and Steelhead

- Approved by the Commission in 2010
- State Conservation Plan *and* Federal Recovery Plan for 4 species listed as 'Threatened' under federal ESA:
 - Lower Columbia River Coho Salmon
 - Lower Columbia River Chinook Salmon
 - Lower Columbia River Steelhead
 - Columbia River Chum Salmon
- Plan Implementation Timeline: 25 years



LCR Plan Adaptive Management



Annual Reports



NMFS 5-yr Status Reviews



12-Year Assessment



12-Year Assessment



Main Document

Executive Summary

1. Introduction
2. Plan Implementation
3. Research and Monitoring
4. Measurable Criteria Evaluation
5. Climate and Ocean Change
6. Conclusions and Next Steps



Appendix I

Review of Action Implementation



Appendix II

Chum Recovery Strategy



Appendix III

Measurable Criteria Assessment



12-Year Assessment Results



Lower Columbia River Coho Salmon

8

populations in Oregon

5

primary populations

1

primary population attained
abundance/productivity goal:

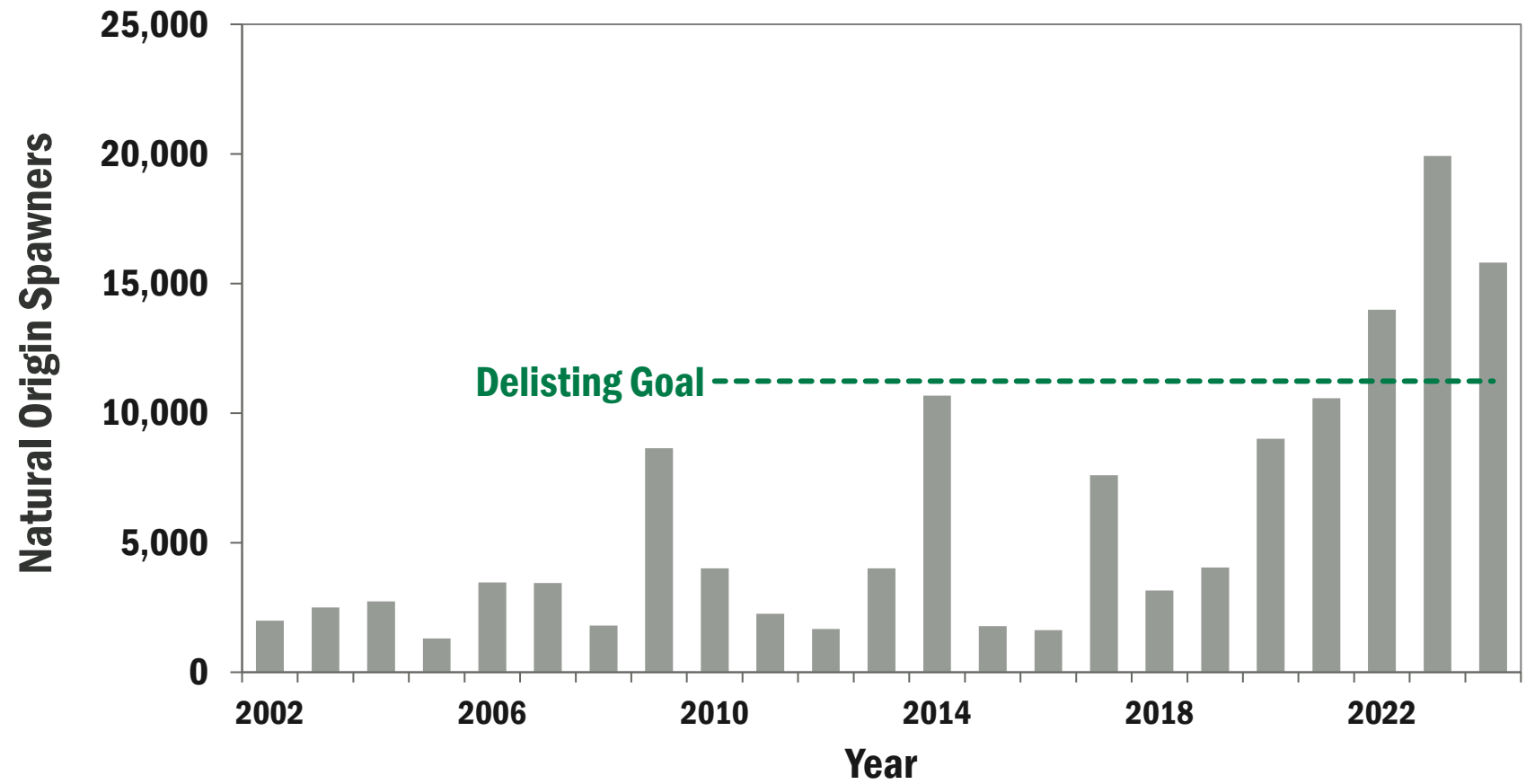
Clackamas Coho

4

primary populations with stable
or increasing trend



Clackamas Coho Salmon



Lower Columbia River Chinook Salmon

12

populations in Oregon
10 fall Chinook, 2 spring Chinook

6

primary populations

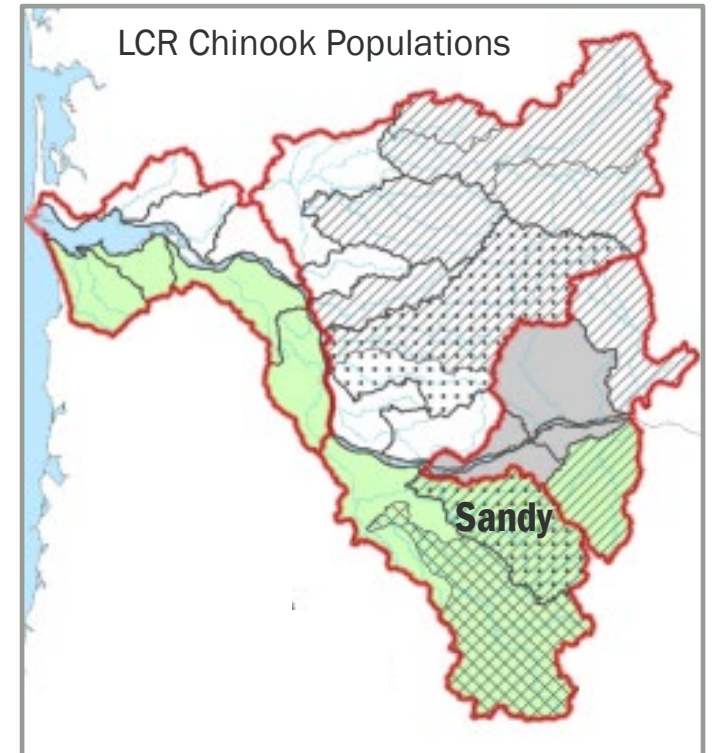
2

primary populations attained
abundance/productivity goal:

Sandy Late-Fall Chinook
Sandy Spring Chinook

4

primary populations with very
low abundance



Lower Columbia River Steelhead



6

populations in Oregon

5 winter steelhead, 1 summer steelhead

4

primary populations

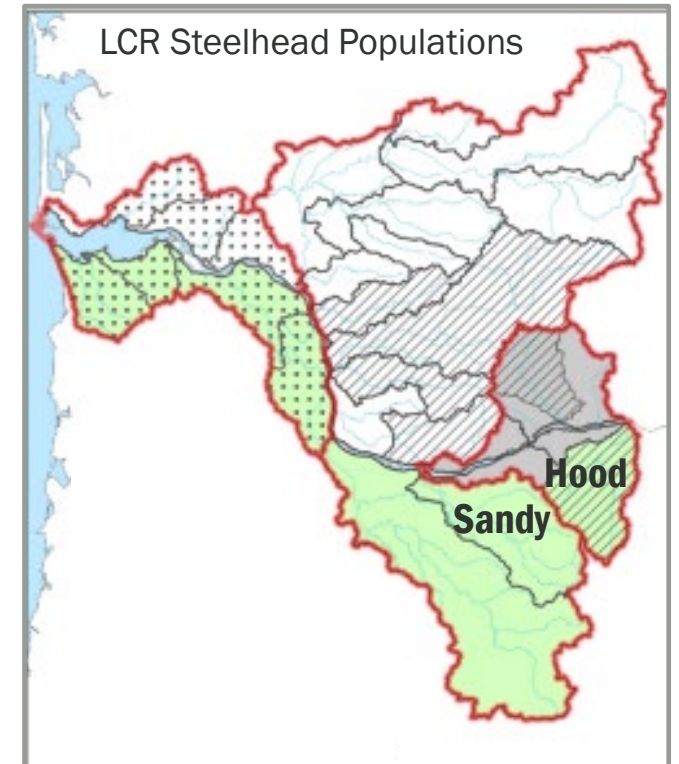
2

primary populations attained
abundance/productivity goal:

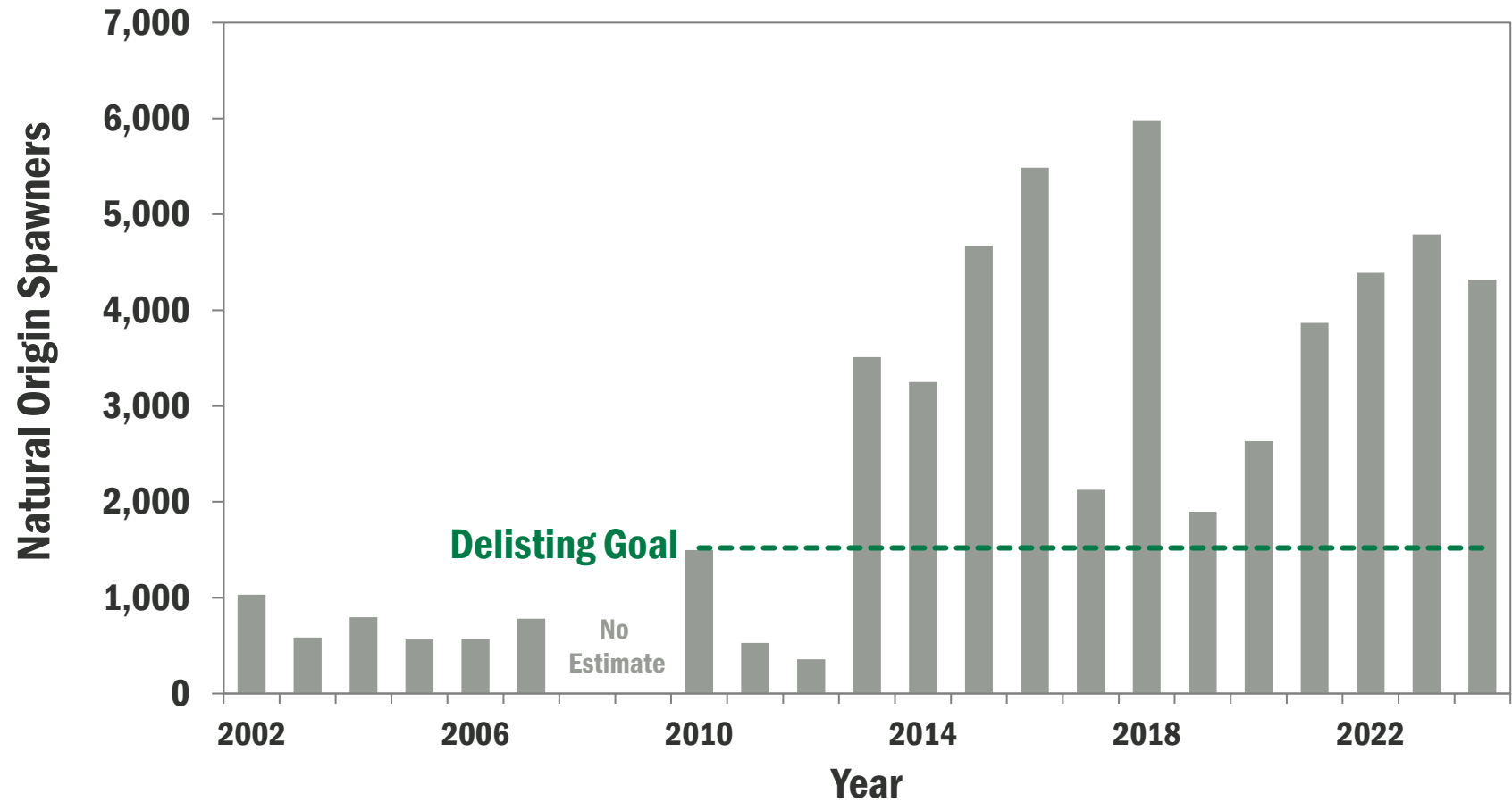
Sandy Winter Steelhead
Hood Winter Steelhead

2

primary populations with stable
trend or limited data



Sandy Winter Steelhead





Plan Implementation



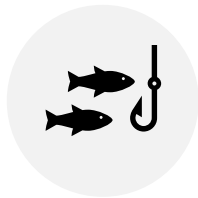
LCR Plan Threat Categories



**Tributary Habitat
Management**



**Estuary Habitat
Management**



Harvest Management



**Hydropower and Flood
Control Management**



Hatchery Management



Predation

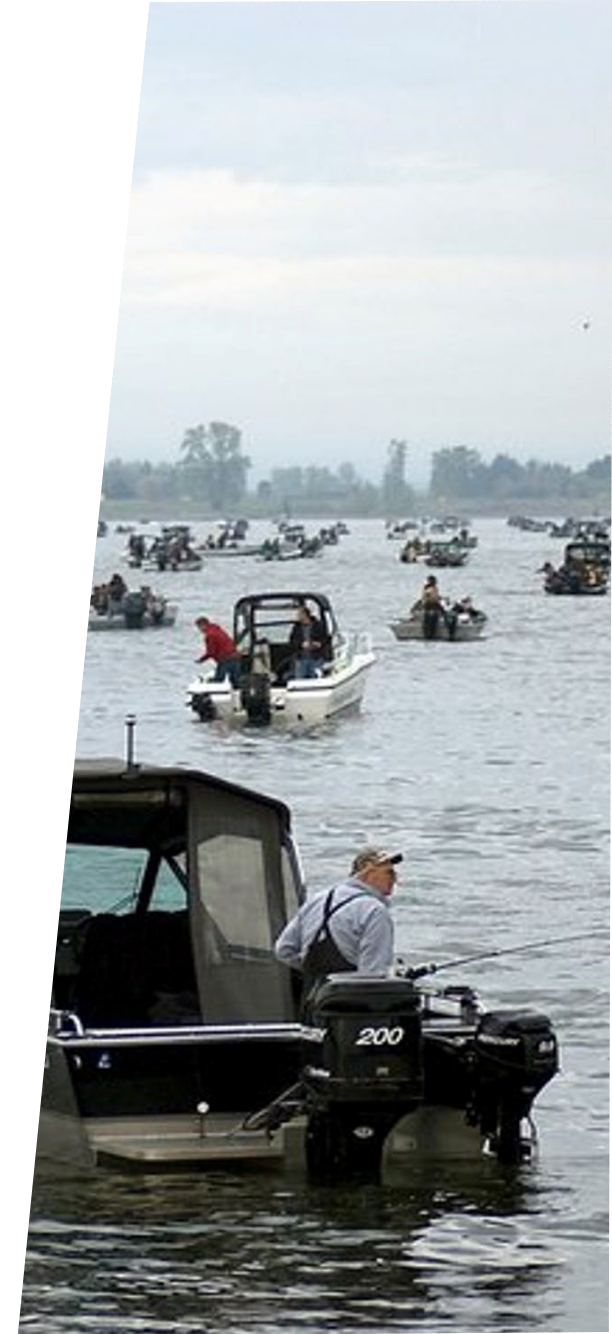
Tributary Habitat Management

- Habitat restoration goals applicable to all species
- Goals vary by basin
- Four restoration action types
- All restoration goals achieved in **Sandy & Youngs Bay**
- Riparian and off-channel habitat restoration goals achieved in **Clackamas & Scappoose**



Harvest Management

- Developed new, more protective harvest matrices for coho and fall Chinook salmon
- Fishery impacts within federally approved limits for listed LCR stocks
- Mark-selective fisheries implemented to increase hatchery harvest and reduce pHOS
- Alternative commercial fishing gear evaluations to determine conservation and economic potential



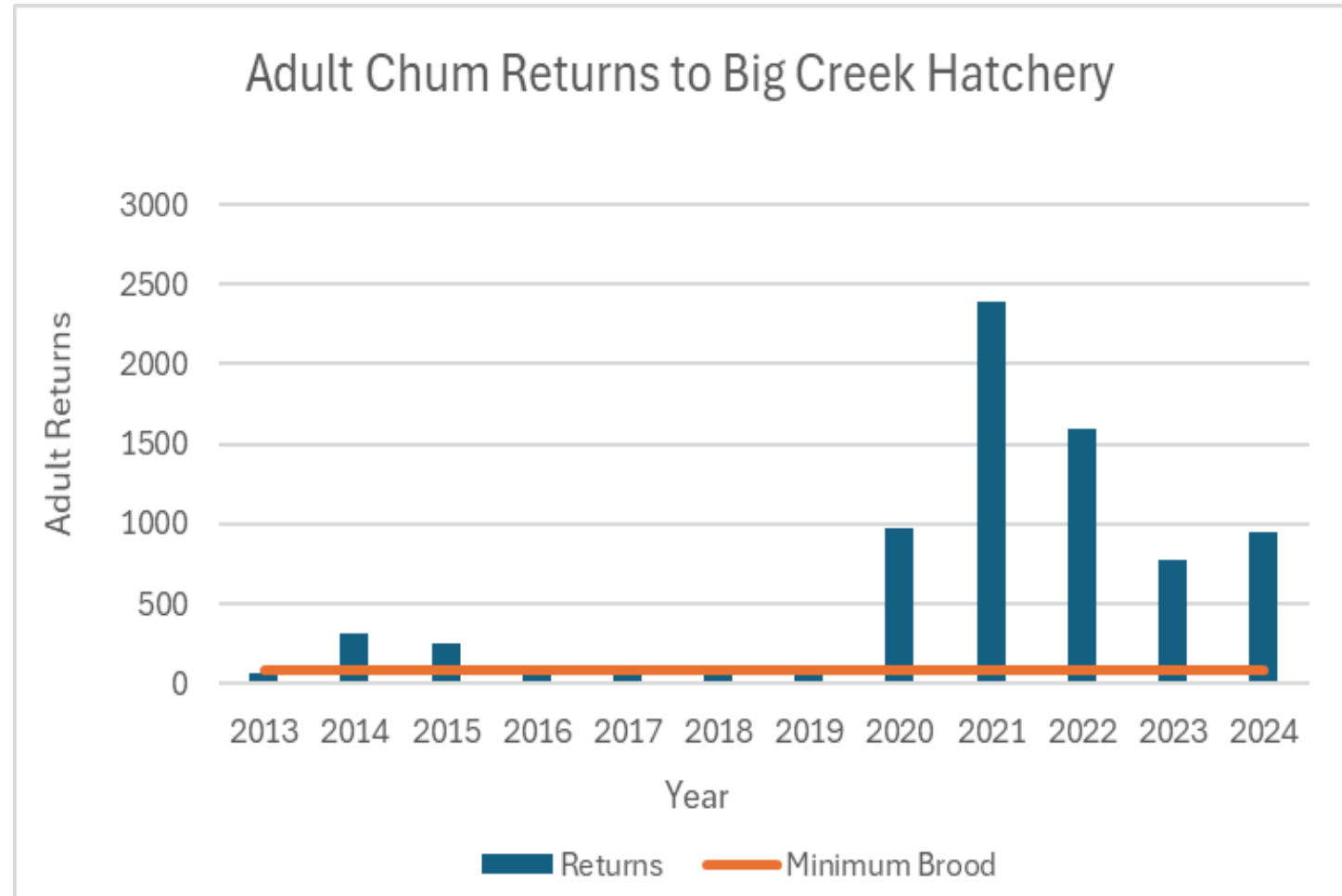
Hatchery Management

- All hatchery programs are highly regulated by NOAA
- Hatchery fish account for about 75% of harvest
- Implemented changes in hatchery releases to maintain opportunity while reducing risk to LCR stocks
- Achieved significant pHOS reductions in several populations (e.g., Sandy spring Chinook)
- Attained or made progress toward pHOS targets in most populations

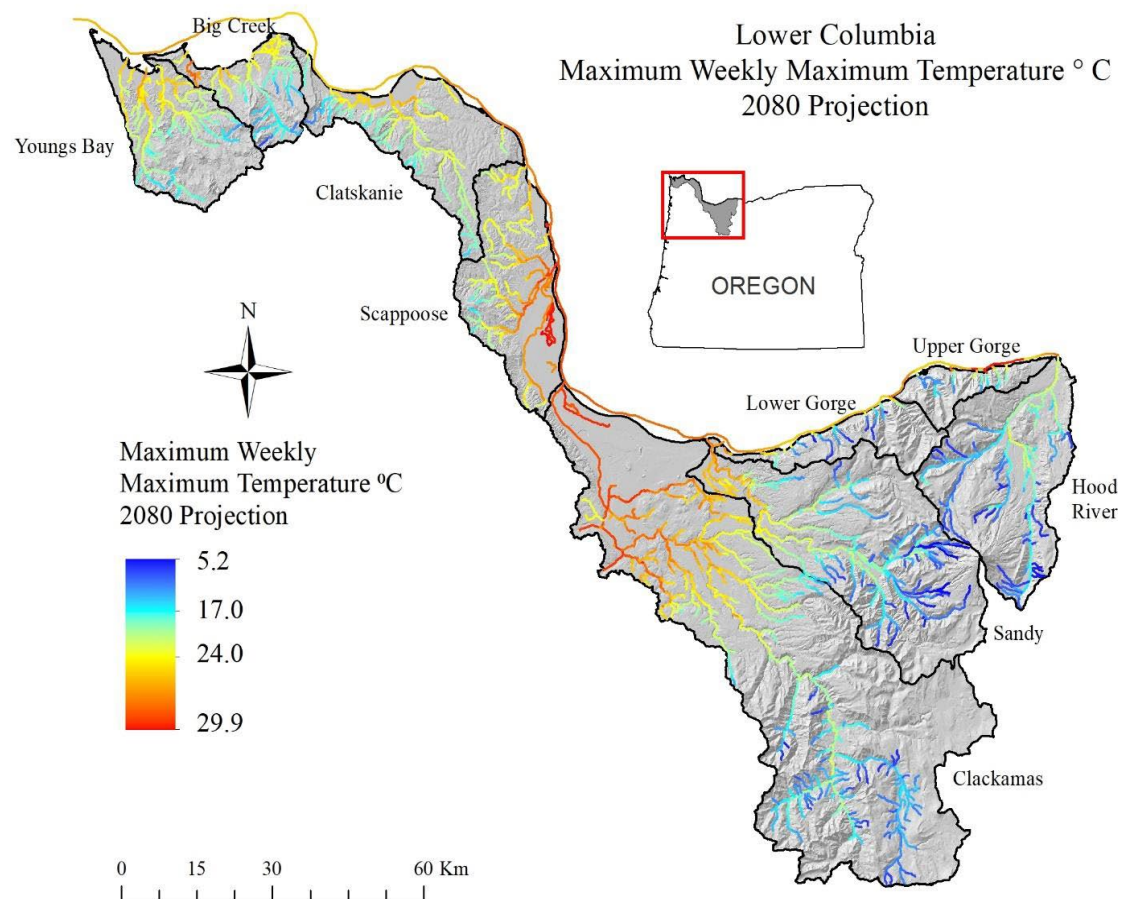


Columbia River Chum Recovery Strategy

- Monitoring confirmed functional extirpation
- Habitat investigations for suitable reintroduction sites
- Conservation hatchery established
- Conservation hatchery returns have allowed significant out-planting



Climate and Ocean Change



Outlook

- Rising stream temperatures, reduced summer flow, and other impacts
- Effects are highly uneven across ESU
- Summer habitat is new limiting factor in certain locations

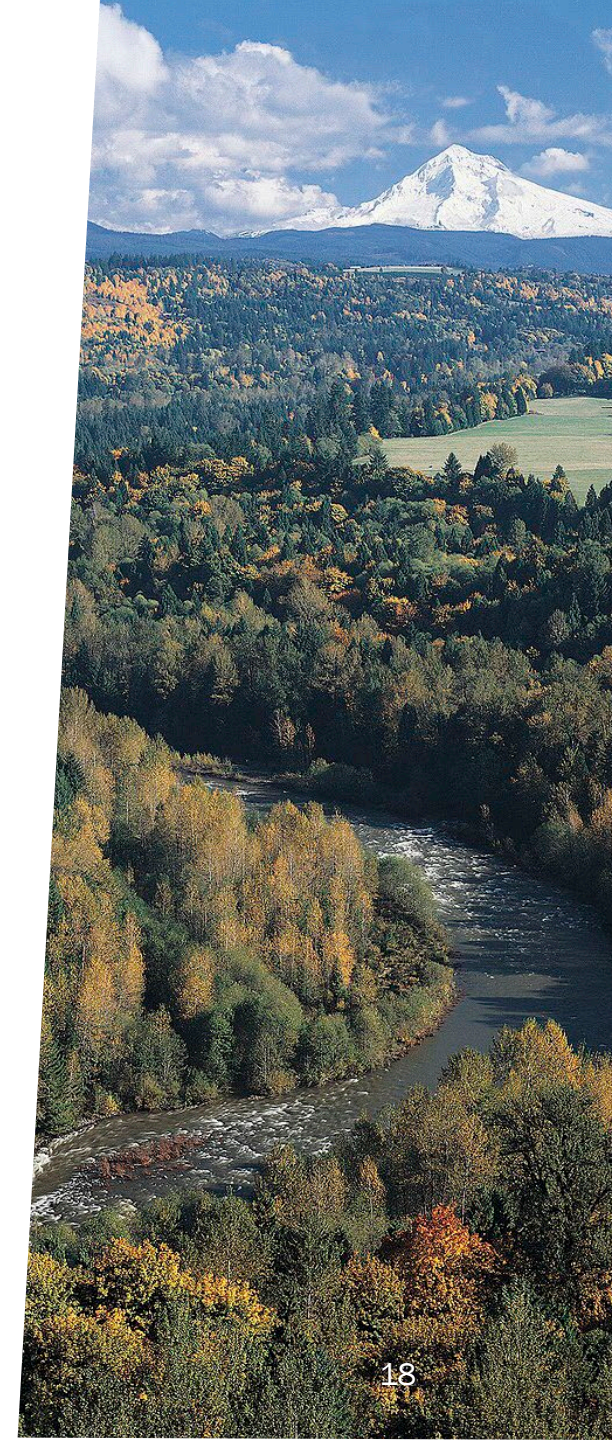
Needs

- Develop strategic action plans incorporating future conditions
- Actions to increase habitat capacity, connectivity, and priority riparian restoration

Conclusions

- Over 80% of Plan actions in progress or completed
- Significant habitat restoration and passage achievements in **Clackamas and Sandy basins**
- Partner capacity key factor in progress toward goals
- New actions identified to improve implementation and plan for the future
 - all threat categories and RME

Achieving recovery of LCR salmon and steelhead will require long-term, sustained action



Adaptive Actions and Next Steps

- Work with partners to increase the pace and scale of restoration in key basins
- Increase population resilience through strategic planning and targeted restoration actions
- Protect and restore estuary habitat
- Initiate a conservation hatchery program for Clatskanie fall Chinook
- Implement the updated Chum Recovery Strategy



Questions?

