



# Reconnecting Rivers: Landscape-Scale Salmon Restoration in the Klamath Basin

December 12, 2025

Mark Hereford – Klamath Fisheries Reintroduction Project  
Leader

Phil Milburn– Klamath/Malheur Watershed Manager



**Oregon Department  
of Fish and Wildlife**



# Connectivity is the backbone of climate-smart conservation.



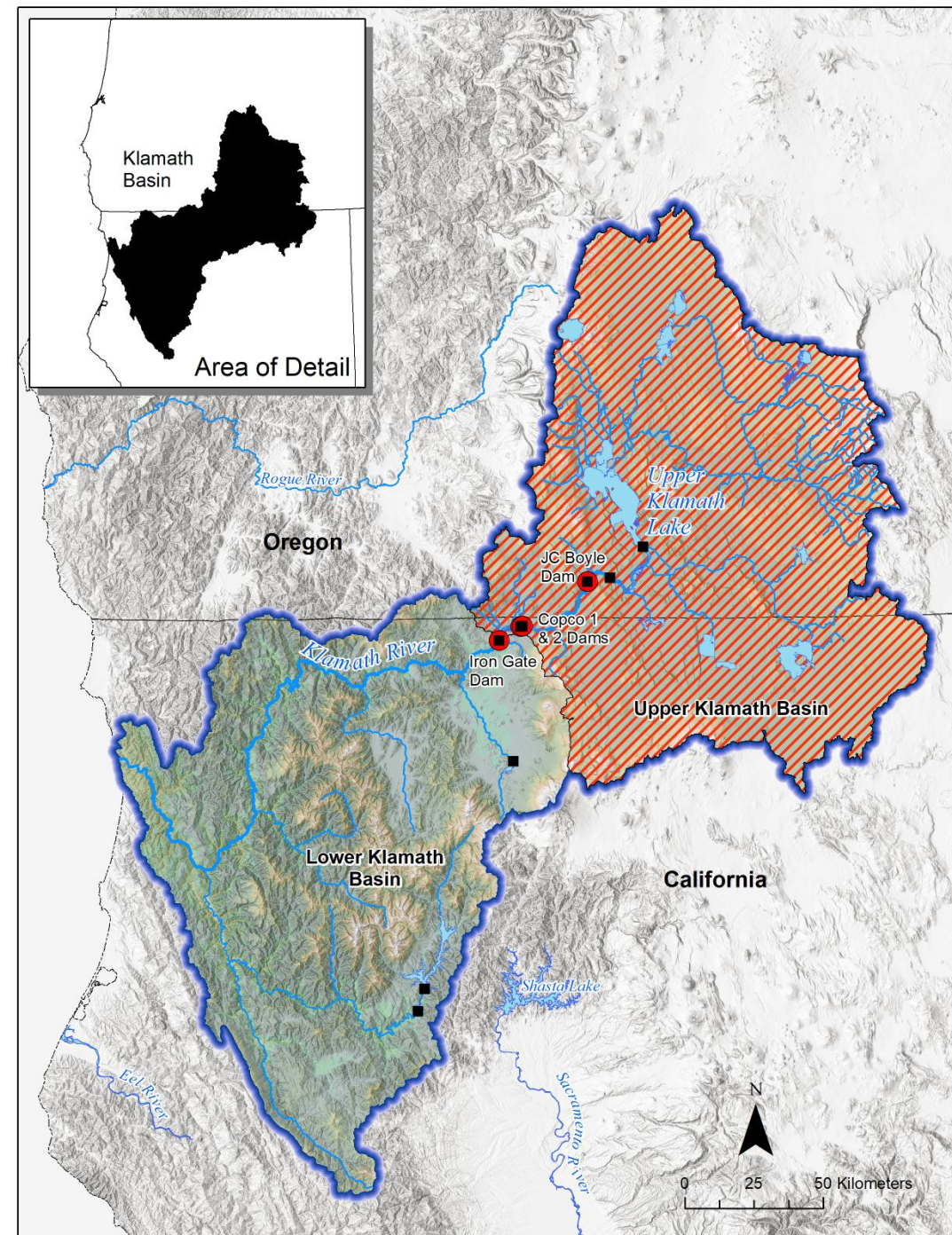
Oregon Department  
of Fish and Wildlife





# Klamath River Basin located on Oregon/California border

- The world's largest river restoration project is happening in Oregon-reconnecting >400 miles of habitat





# **Largest dam removal in US history**

## **four mainstem hydroelectric dams**



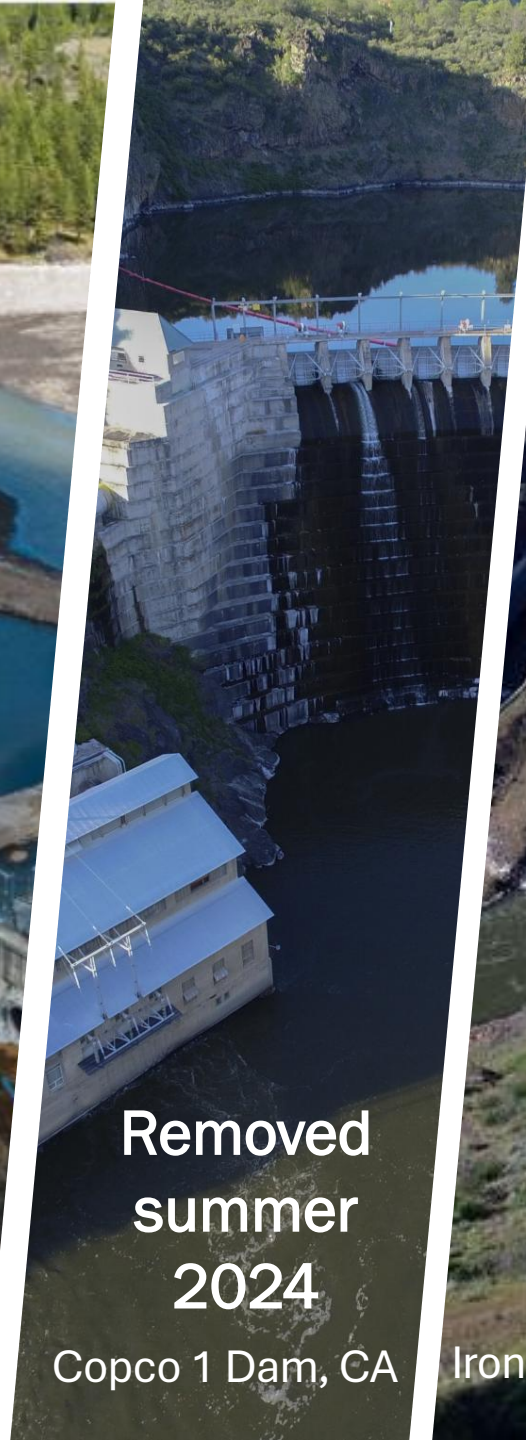
**Removed  
fall  
2023**

Copco 2 Dam, CA



**Removed  
summer  
2024**

JC Boyle Dam, OR



**Removed  
summer  
2024**

Copco 1 Dam, CA



**Removed  
fall  
2024**

Iron Gate Dam, CA



# Created connection to diverse hydrology



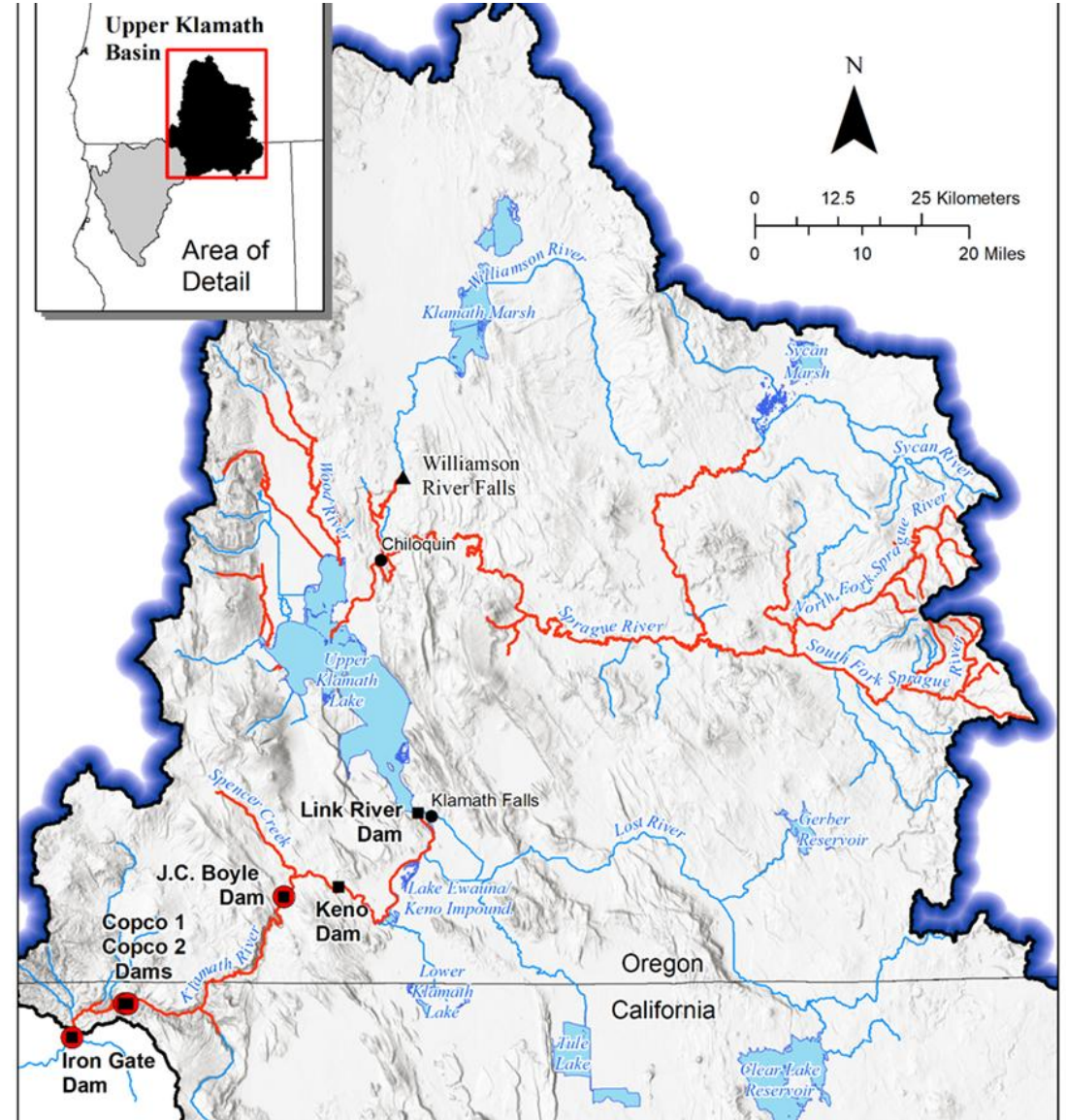
**Spring Creek, tributary to the Williamson River**



5 **North Fork Sprague River**

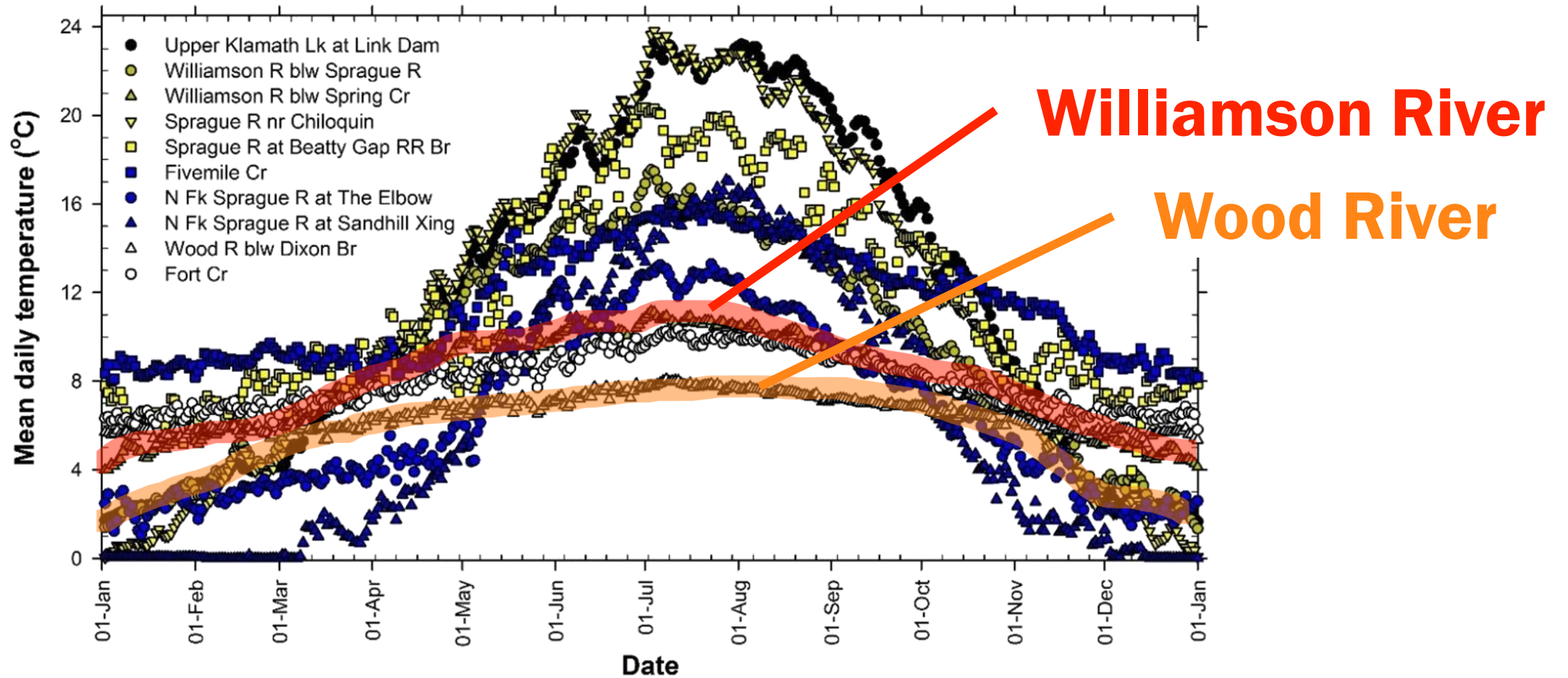


**Sprague River**





# The Klamath Basin is rich with cold water habitat for fish



Huntington 2019; ODFW and TKT 2021



# Passage restored for the first time in over 100 years



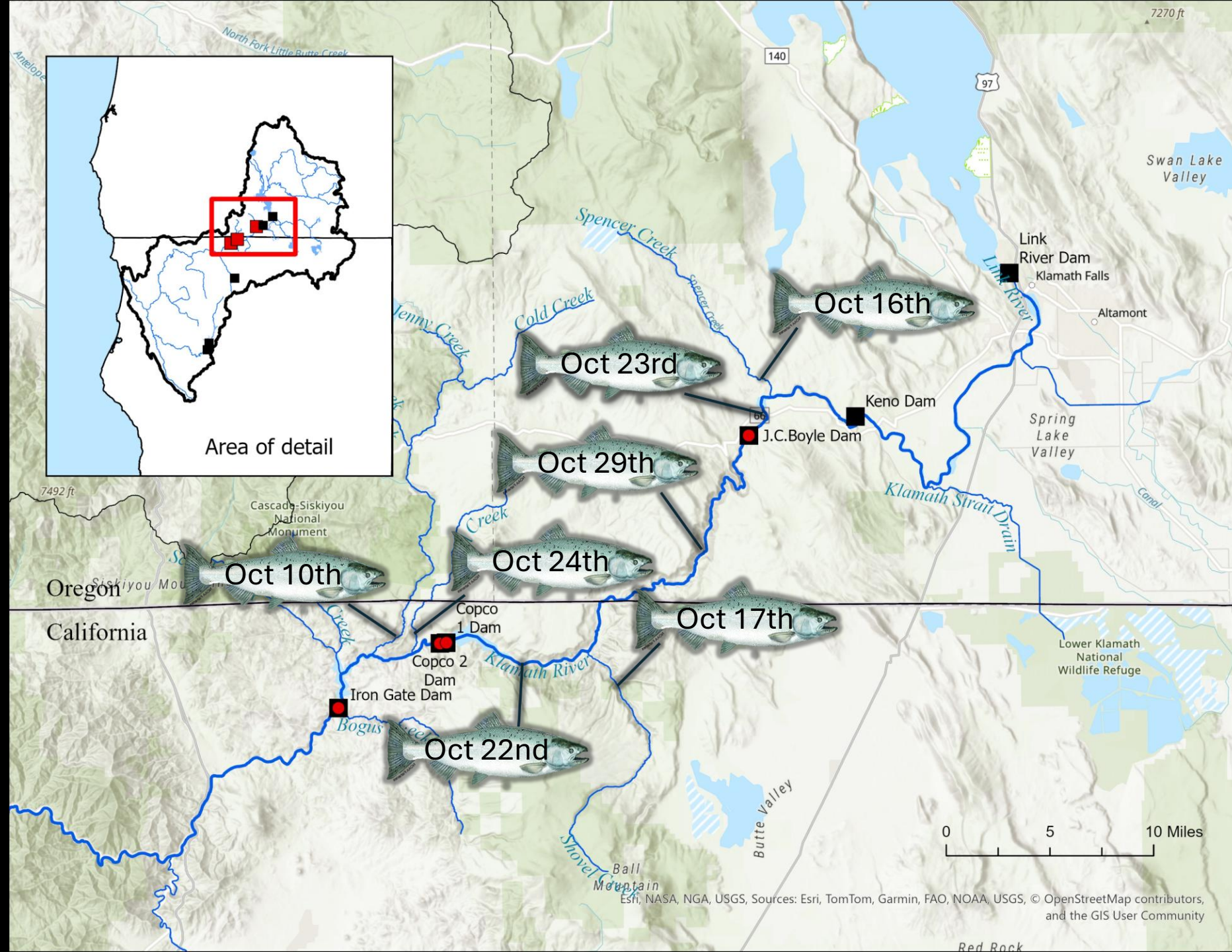
Iron Gate Cofferd Dam breach October 2<sup>nd</sup> 2024

PC: Swiftwater Films



# First observations of fall-run Chinook Salmon 2024

- Oct 10<sup>th</sup> - Jenny Creek, CA
- Oct 16<sup>th</sup> - Spencer Creek, OR
- Oct 17<sup>th</sup> - Shovel Creek, CA
- Oct 22<sup>nd</sup> – Klamath River, CA above former Copco 1 Dam
- Oct 23<sup>rd</sup> – Klamath River, OR above former JC Boyle Dam
- Oct 24<sup>th</sup> – Fall Creek Hatchery, CA
- Oct 29<sup>th</sup> – Klamath River, OR below former JC Boyle Dam
- **TOTAL EST.= 1,954**





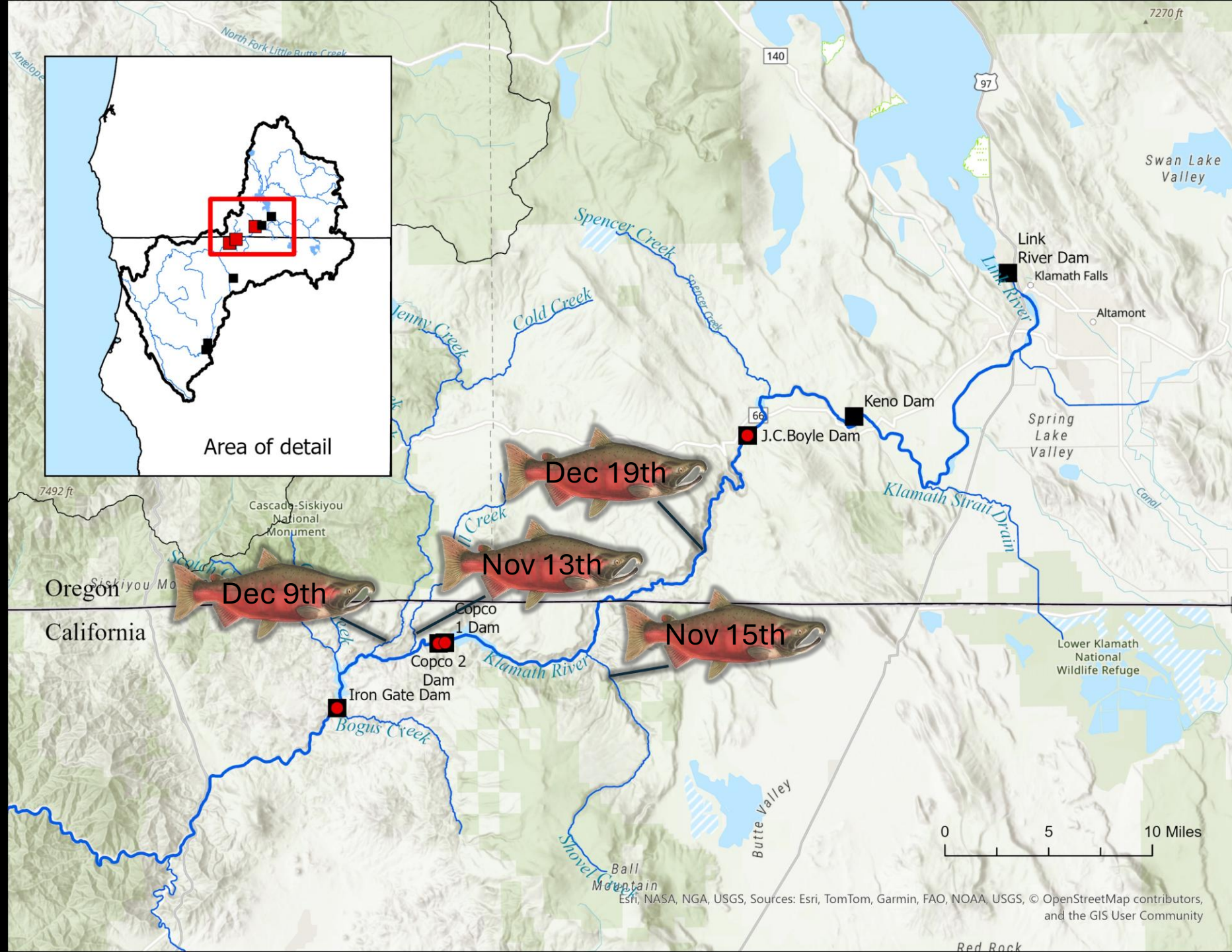
# First observations of Coho Salmon 2024

- Nov 13<sup>th</sup> – Fall Creek Hatchery, CA
- Nov 15<sup>th</sup> - Shovel Creek<sup>1</sup>, CA
- Dec 9<sup>th</sup> - Jenny Creek<sup>1</sup>, CA
- Dec 19<sup>th</sup> - Klamath River<sup>2</sup>, OR below former JC Boyle Dam

• **TOTAL EST. = 117**

<sup>1</sup>Video weir estimates

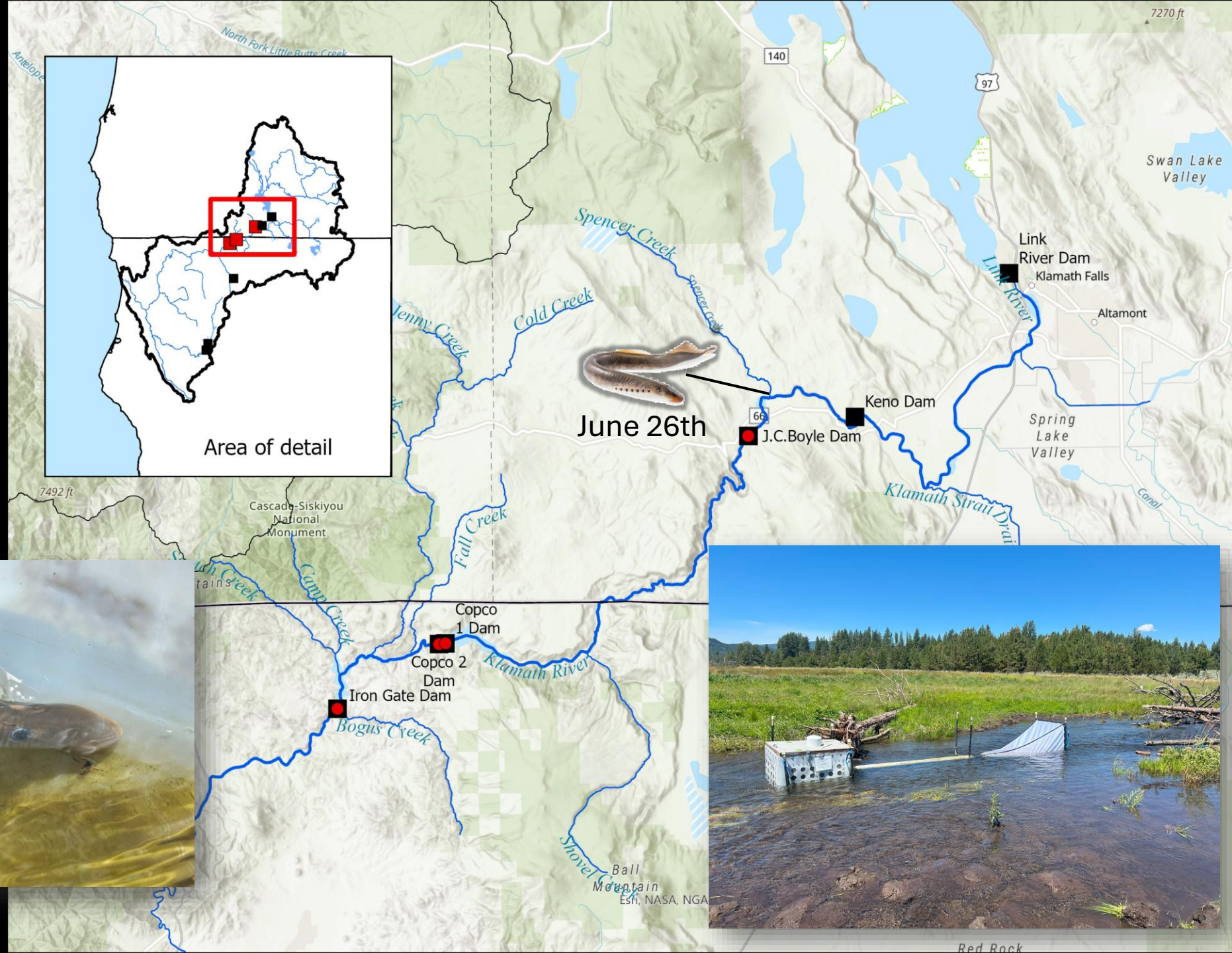
<sup>2</sup>Carcass or redd counts





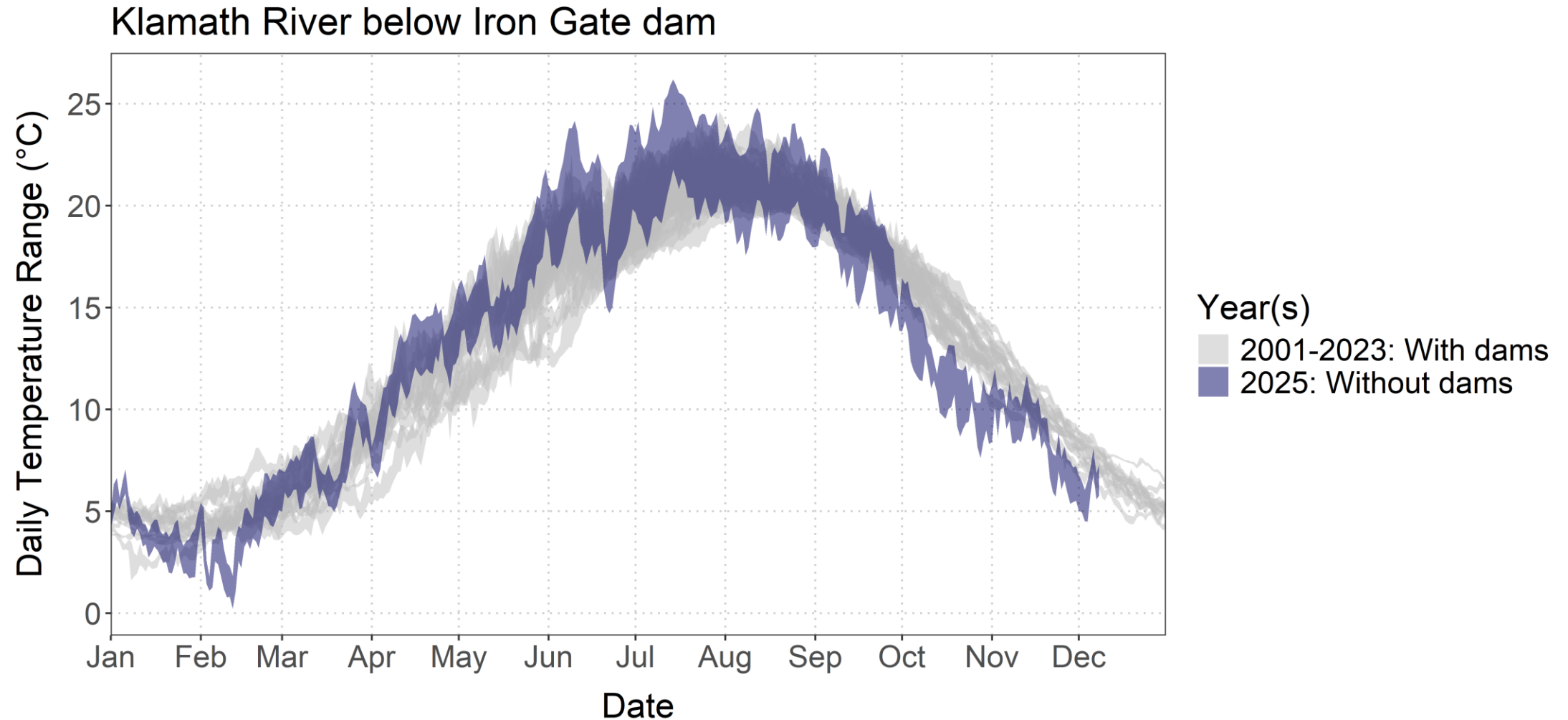
# First observations of Pacific Lamprey

- June 26<sup>th</sup>, 2025 – Spencer Creek
  - 5 individuals over 2 weeks captured in downstream salmonid migrant trap





# Restoration of natural temperature regimes

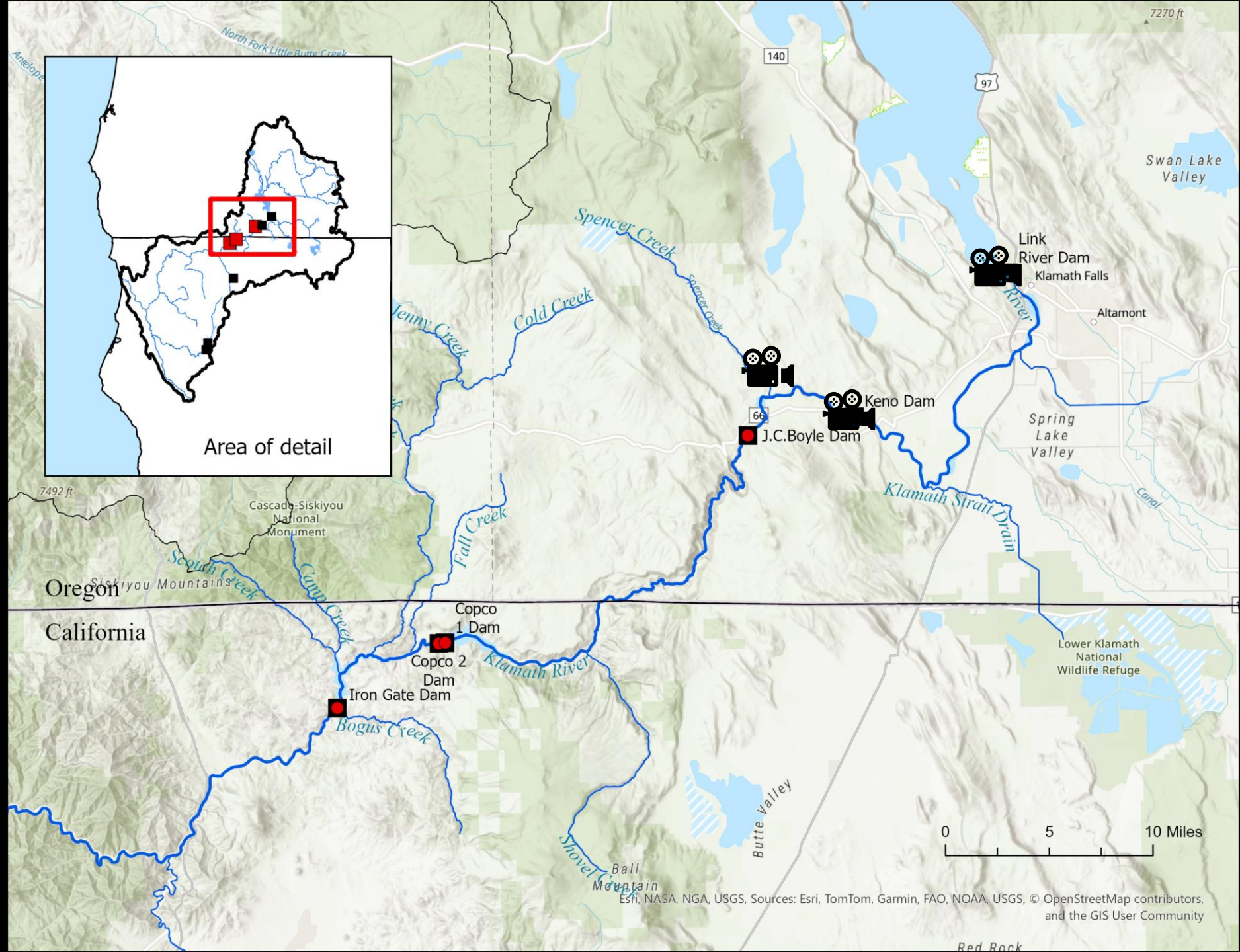


Courtesy of Karuk Tribe Water Quality Department



# Fall 2025 ODFW Monitoring Effort

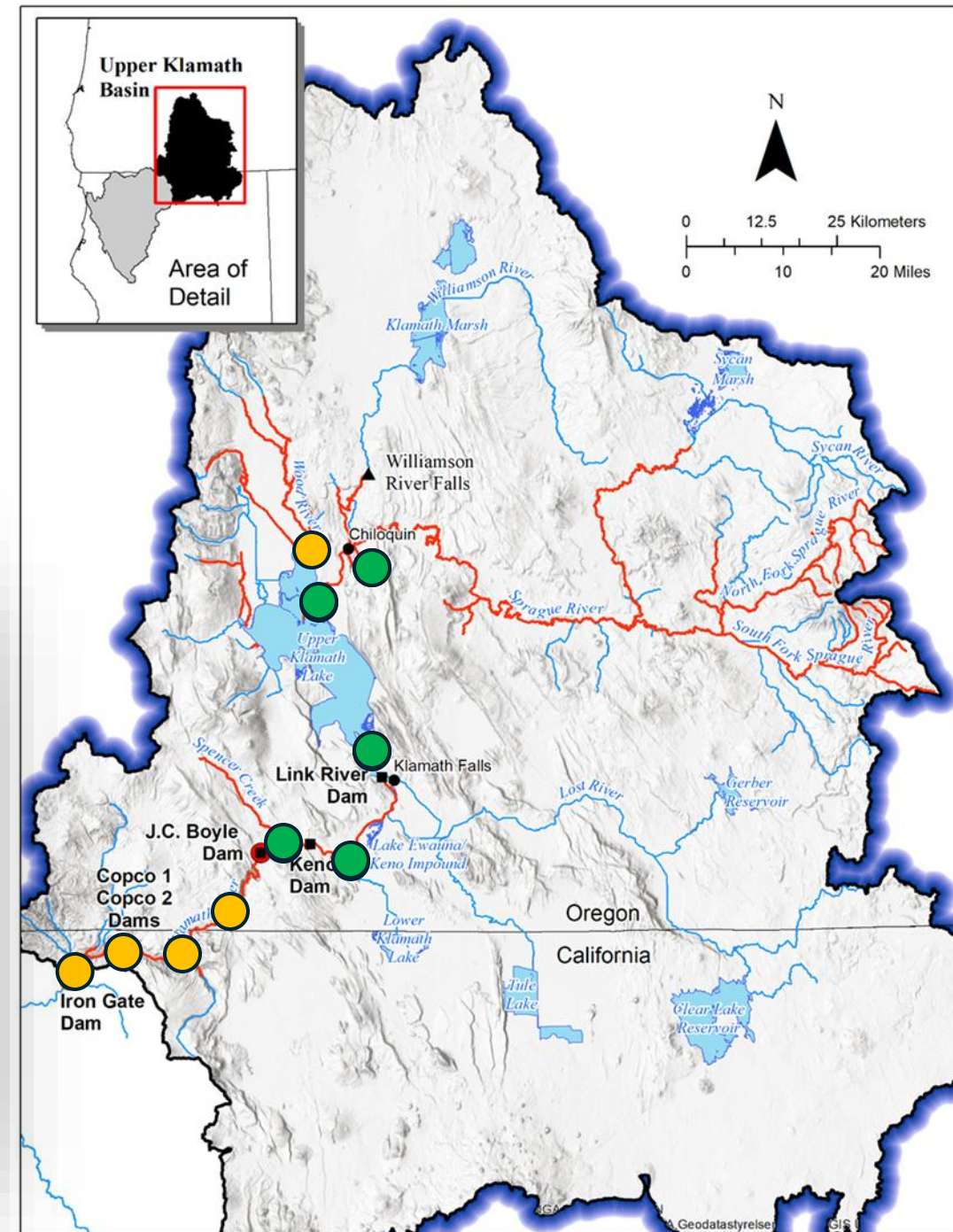
- Spawning Ground Surveys
- Video systems
  - Spencer Creek
  - Keno Dam Fish Ladder
  - Link River Dam Fish Ladder



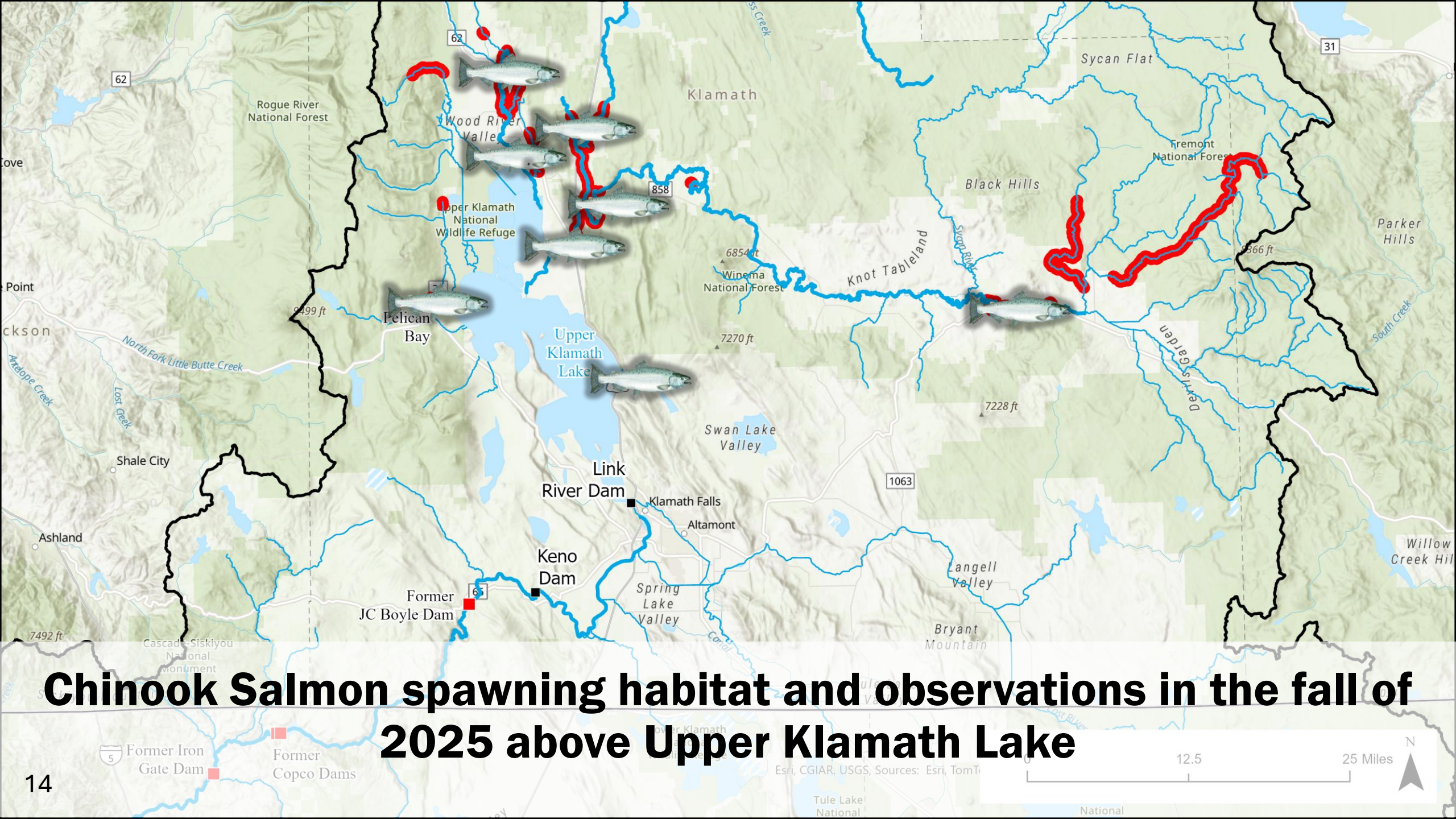


# Fall 2025 ODFW Monitoring Effort

- Radio Telemetry







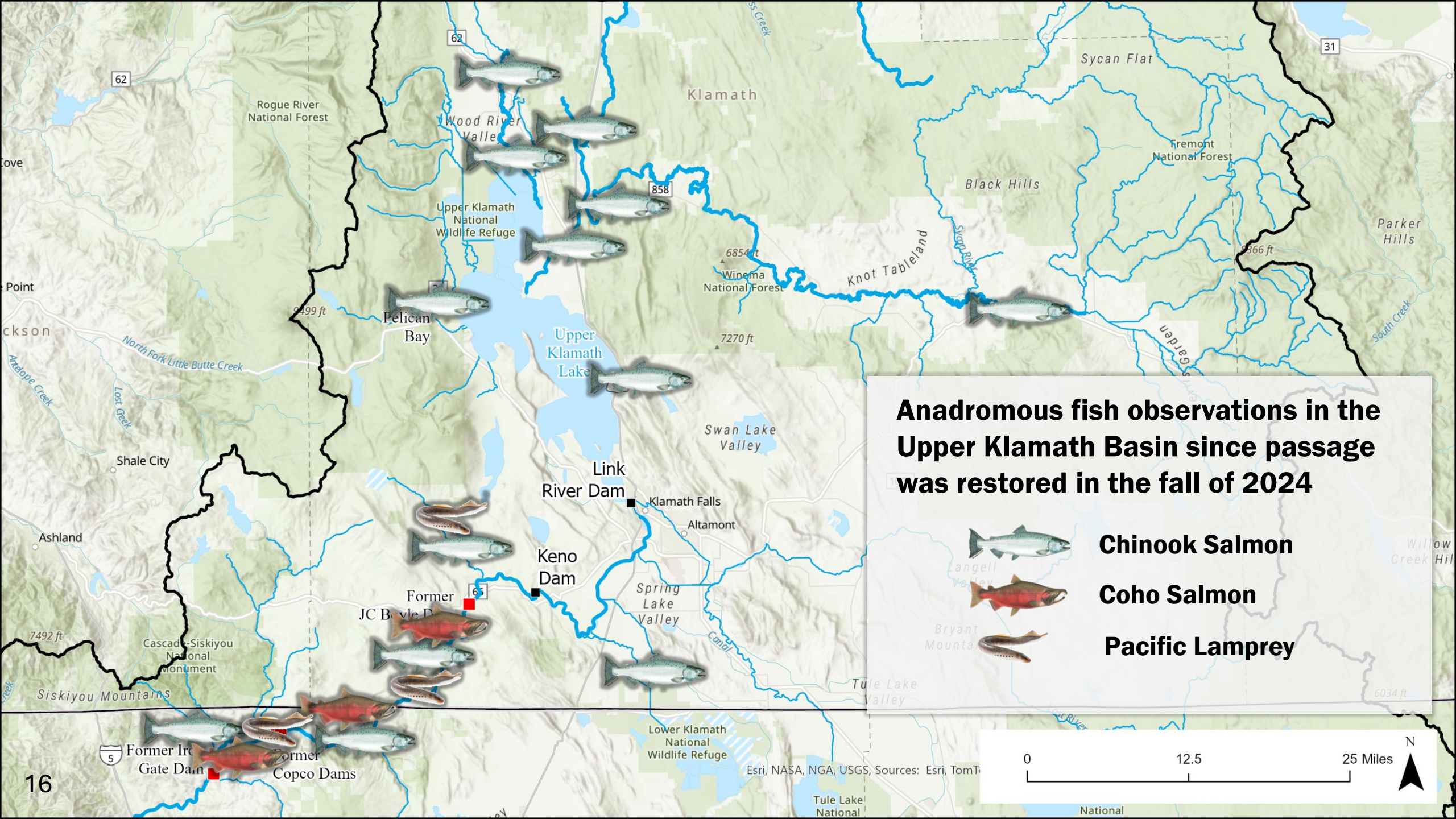
# Chinook Salmon spawning habitat and observations in the fall of 2025 above Upper Klamath Lake





**PC: Paul Wilson, Maqlaqs Media**









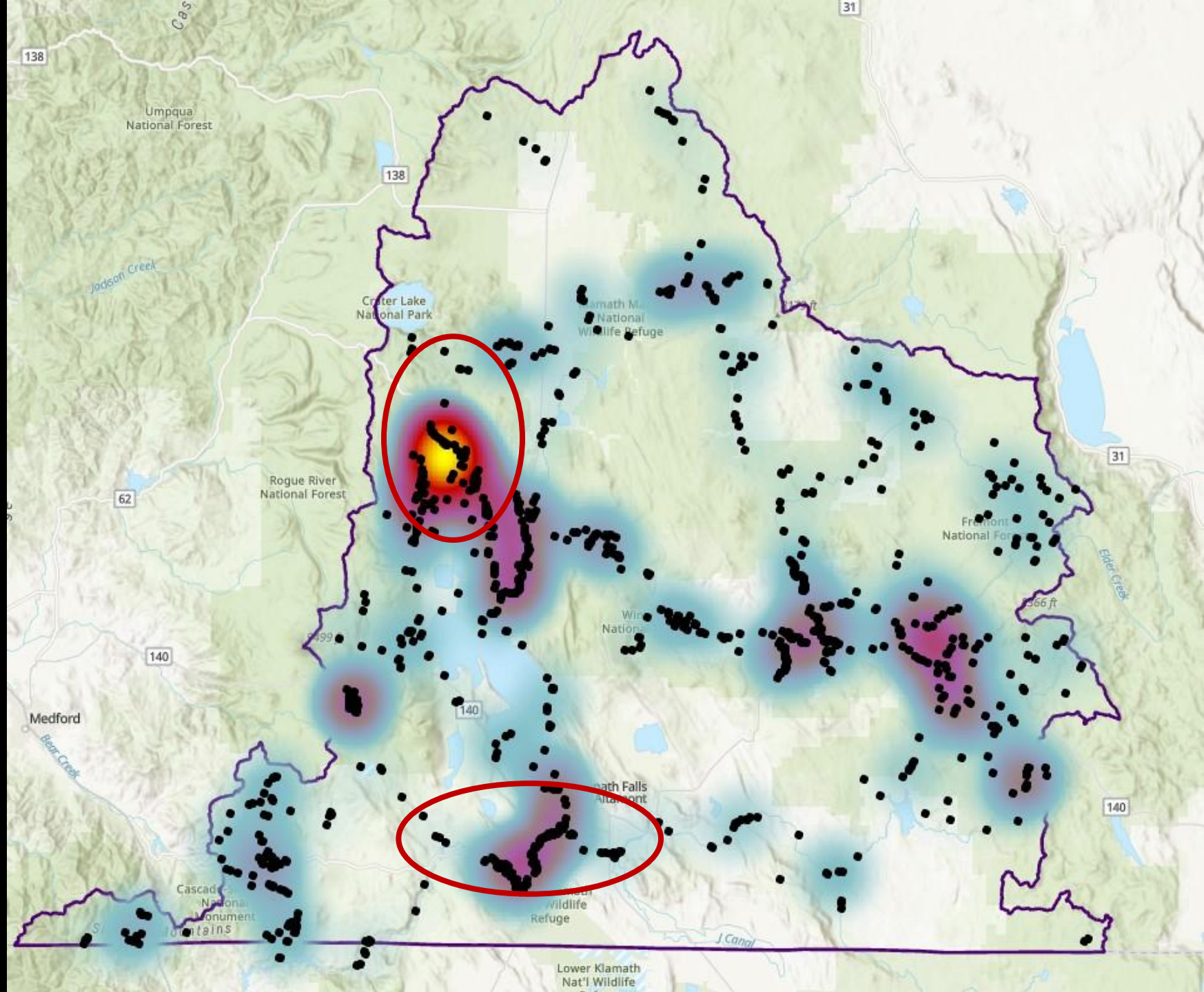
# Work to do...

## Unmet Need For Screening



# Focusing on Priorities

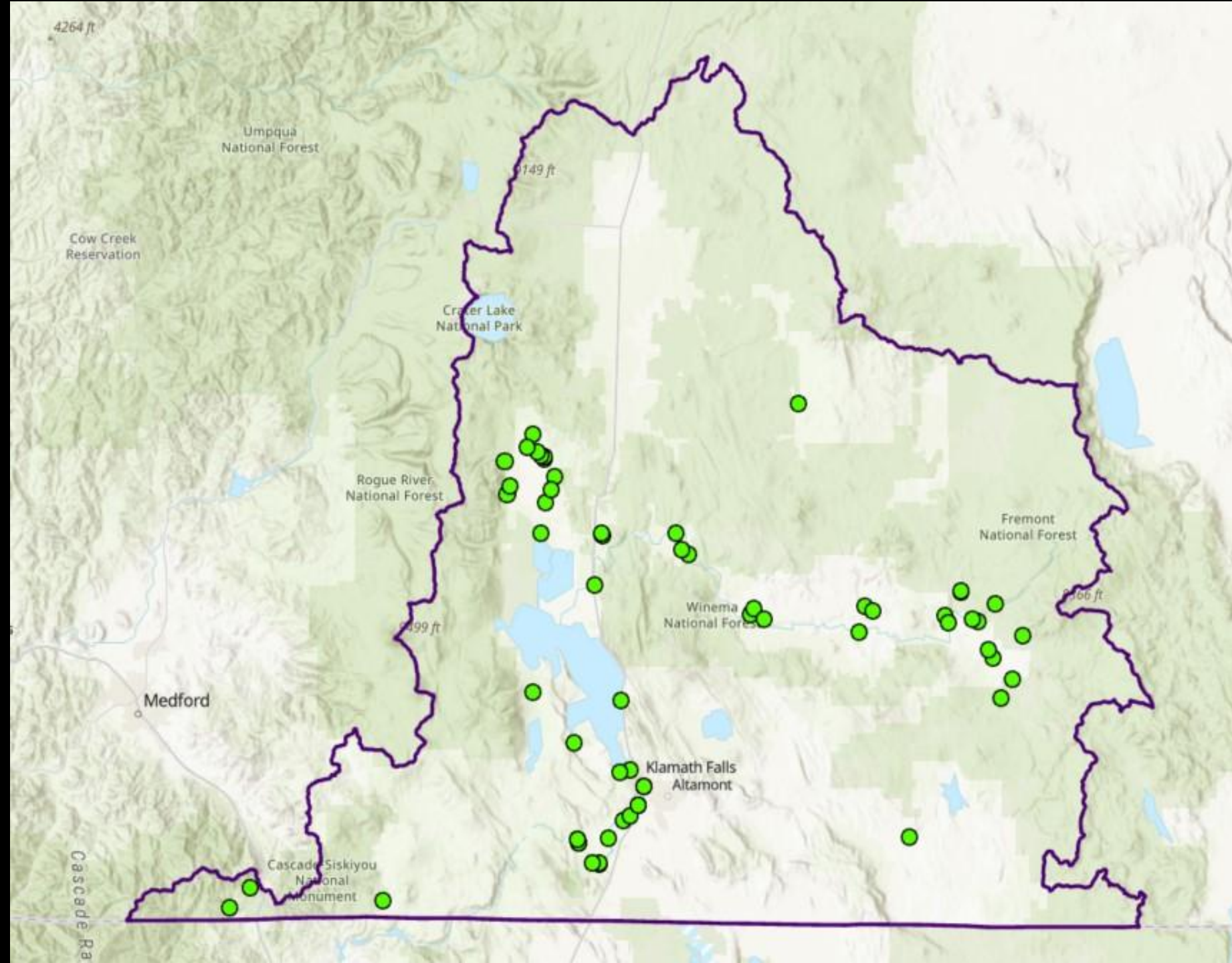
- New Klamath Screening Coordinator
- Federal Funds - PCSRF





# Progress to date

- 56 Known screens
- 17 Installed since KPFA 2016
- 7 In progress







**PC: Paul Wilson, Maqlaqs Media**