






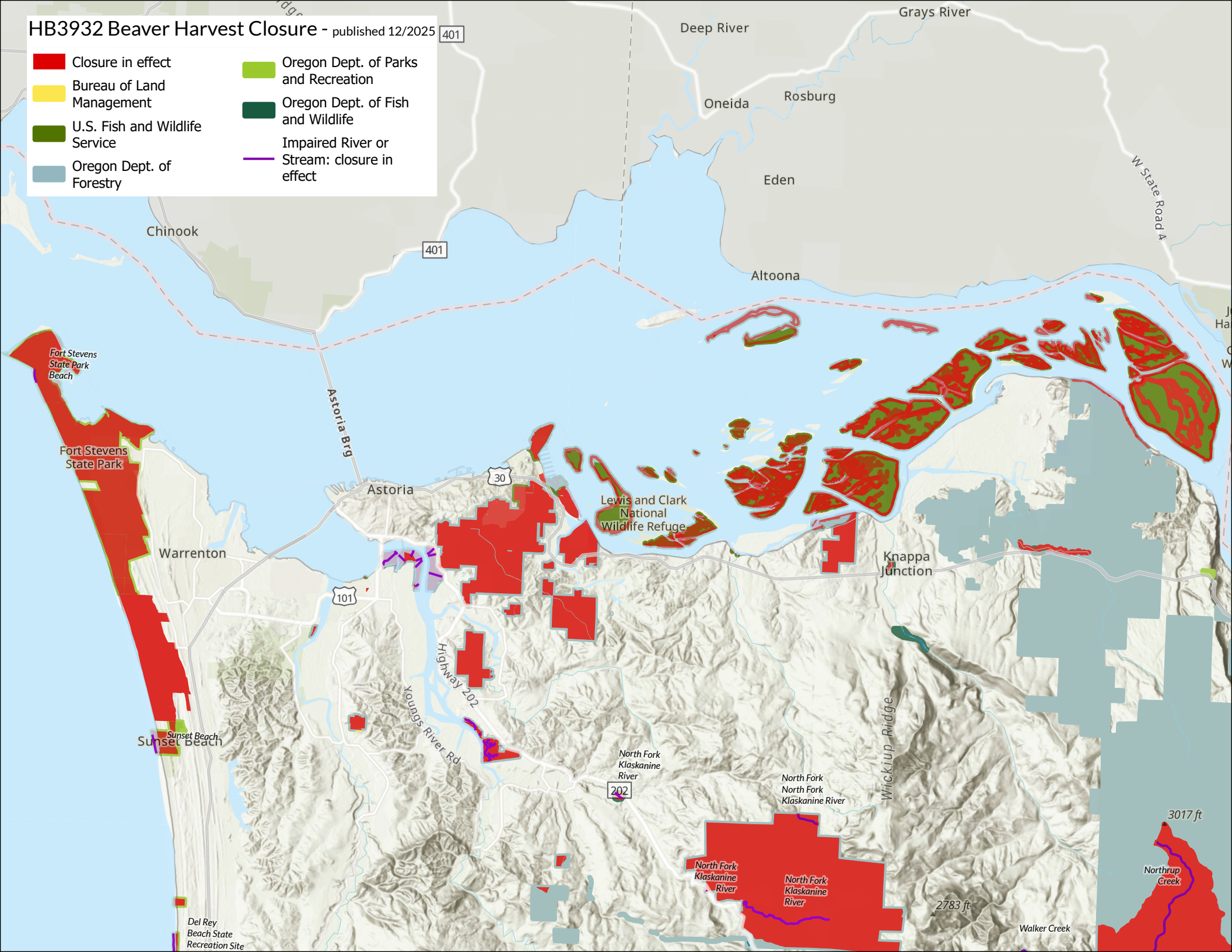


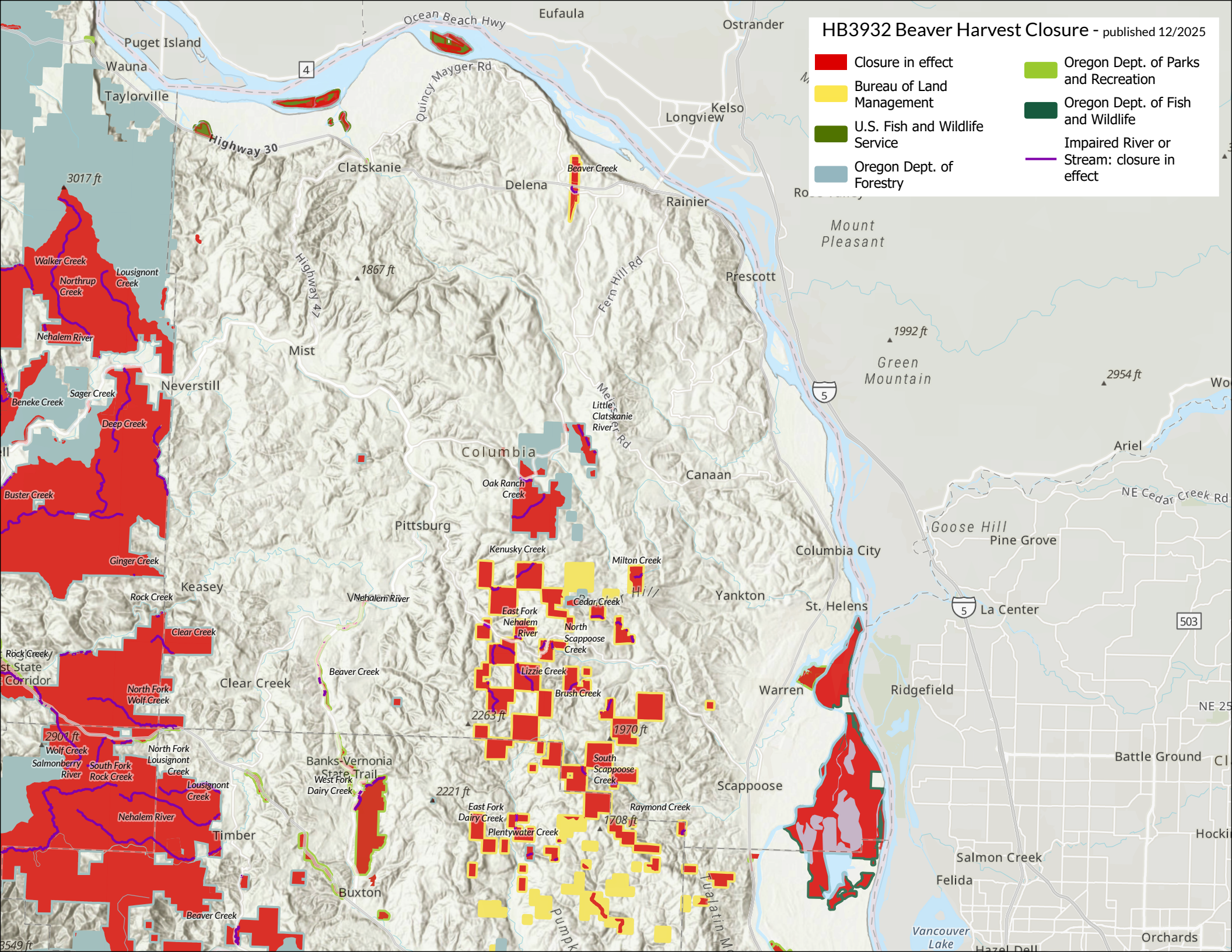
HB3932 Beaver Harvest Closure - published 12/2025

- |   |                                |   |   |
|---|--------------------------------|---|---|
|   | Closure in effect              |   | Oregon Dept. of Parks and Recreation        |
|  | Bureau of Land Management      |  | Oregon Dept. of Fish and Wildlife           |
|  | U.S. Fish and Wildlife Service |  | Impaired River or Stream: closure in effect |
|  | Oregon Dept. of Forestry       |   |   |





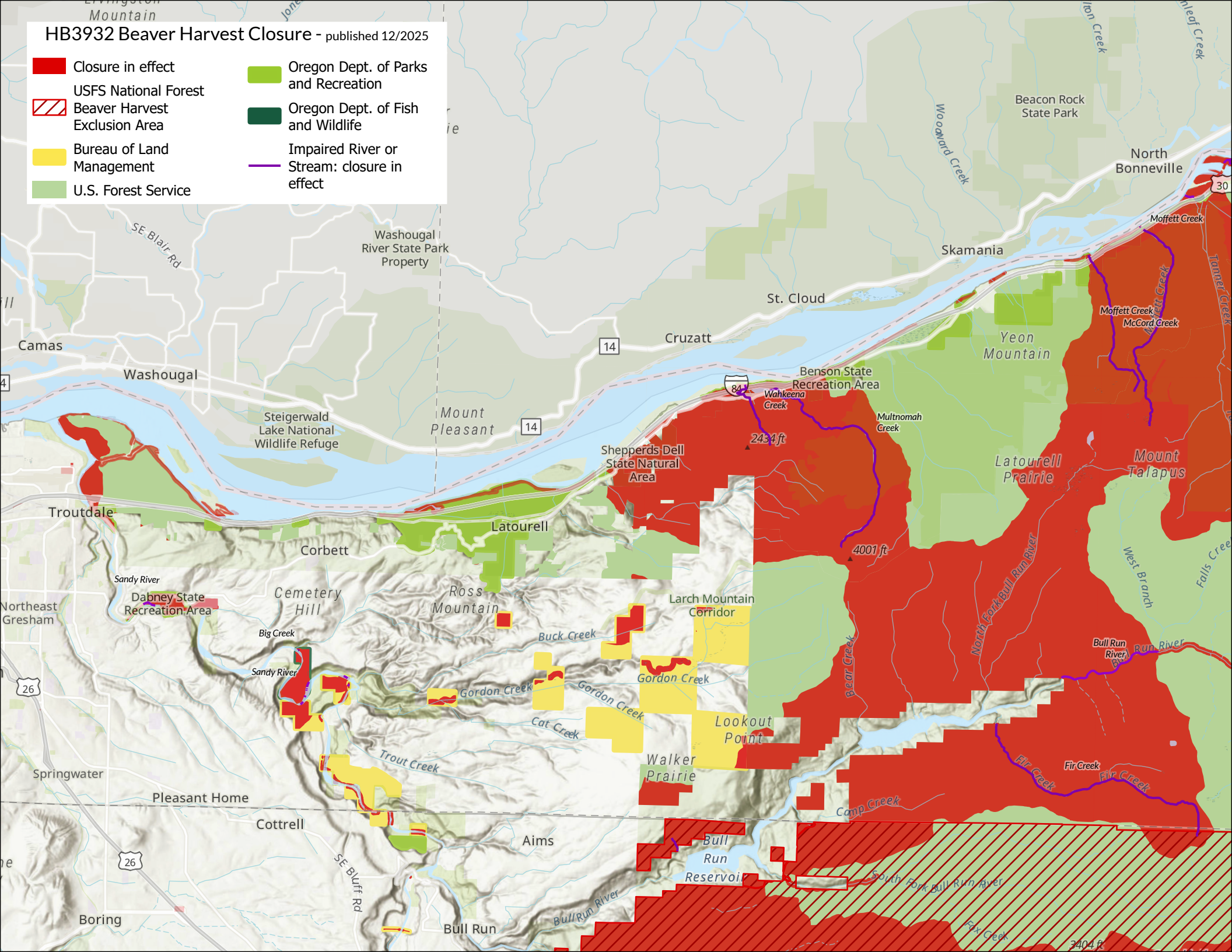
HB3932 Beaver Harvest Closure - published 12/2025





# HB3932 Beaver Harvest Closure - published 12/2025

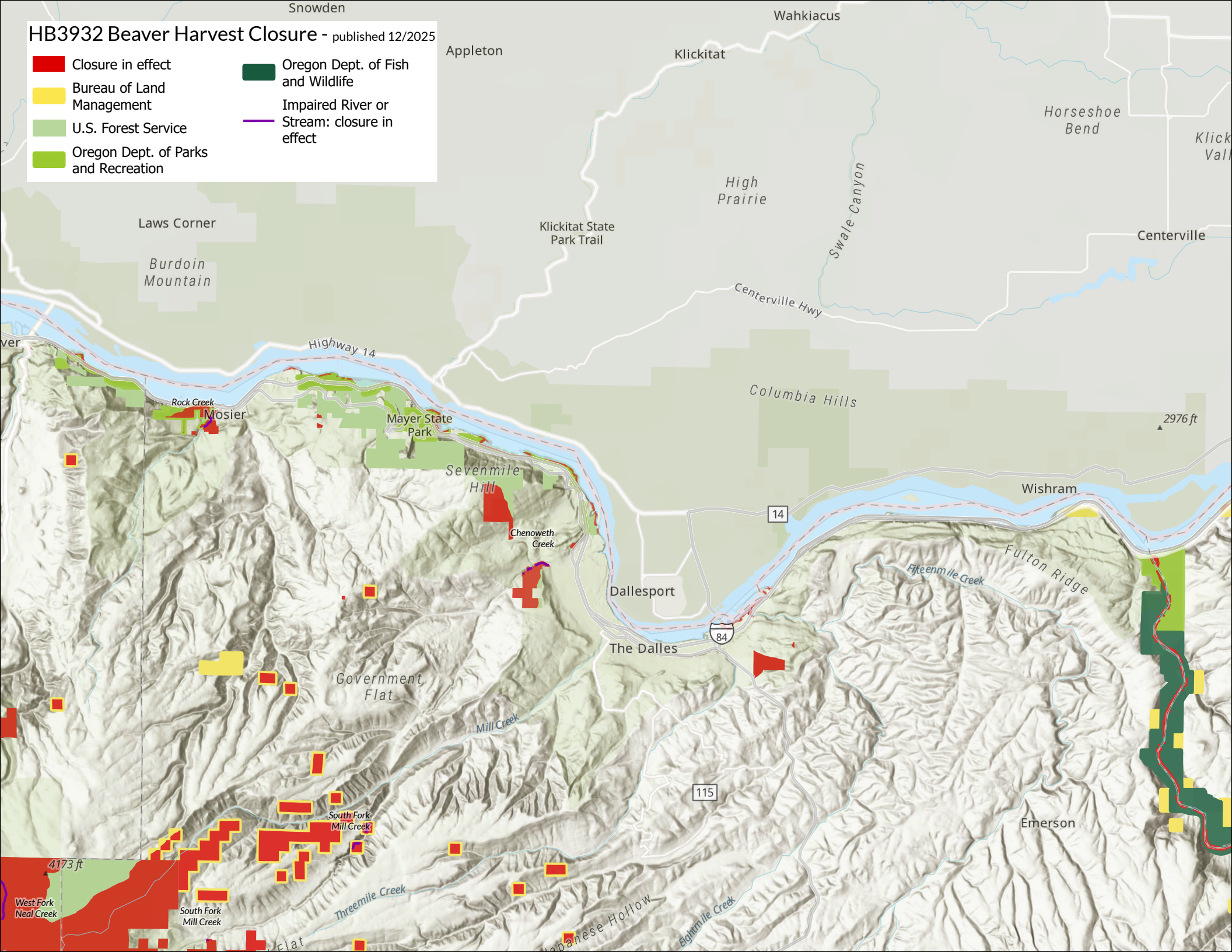
- Closure in effect
- ▨ USFS National Forest
- ▨ Beaver Harvest Exclusion Area
- Bureau of Land Management
- U.S. Forest Service
- Oregon Dept. of Parks and Recreation
- Oregon Dept. of Fish and Wildlife
- Impaired River or Stream: closure in effect










HB3932 Beaver Harvest Closure - published 12/2025

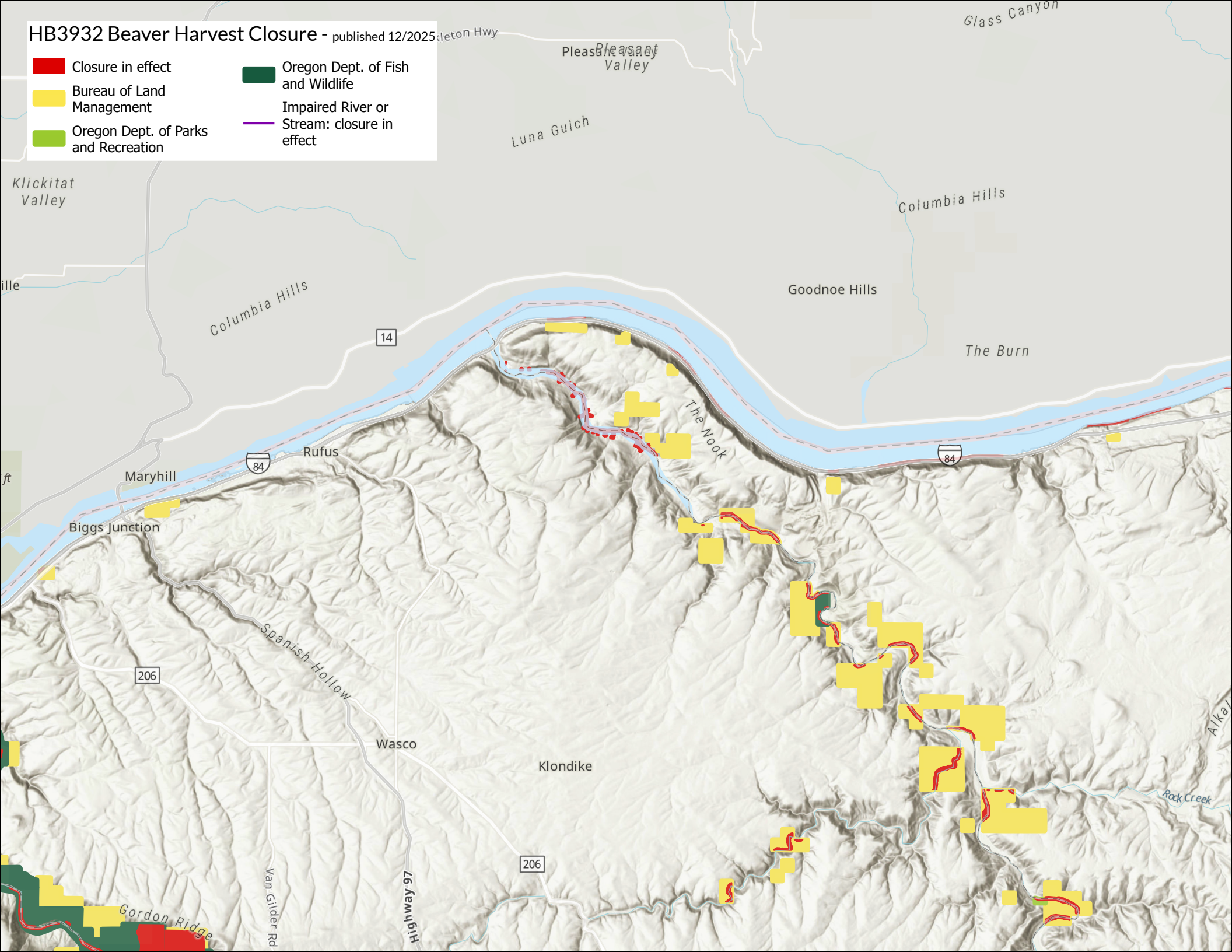
- Closure in effect
- Bureau of Land Management
- U.S. Forest Service
- Oregon Dept. of Parks and Recreation
- Oregon Dept. of Fish and Wildlife
- Impaired River or Stream: closure in effect





HB3932 Beaver Harvest Closure - published 12/2025

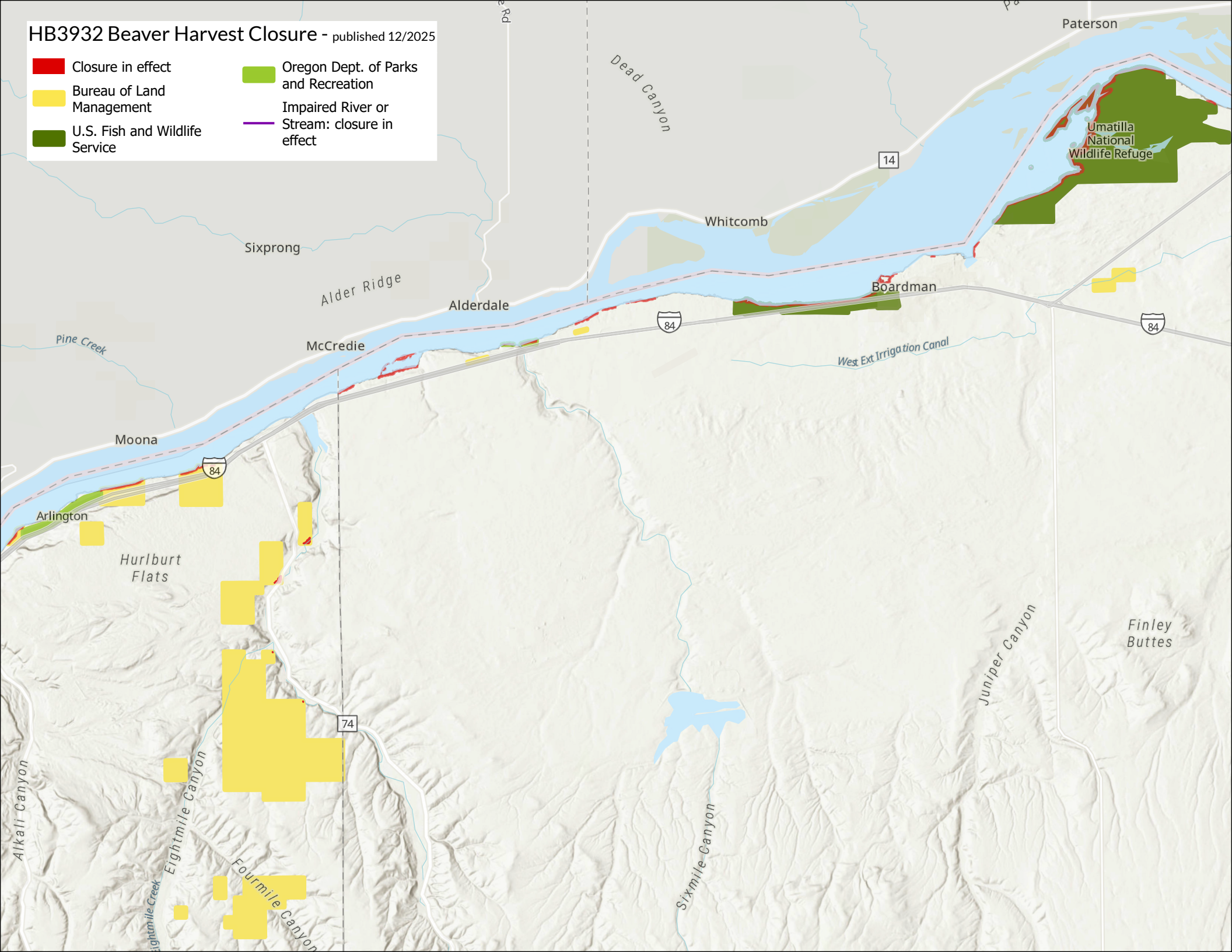
- |  |                                      |   |   |
|--|--------------------------------------|---|---|
|   | Closure in effect                    |   | Oregon Dept. of Fish and Wildlife           |
|  | Bureau of Land Management            |  | Impaired River or Stream: closure in effect |
|  | Oregon Dept. of Parks and Recreation |   |   |





HB3932 Beaver Harvest Closure - published 12/2025

- |   |   |
|---|---|
| <div>Closure in effect</div>              | <div>Oregon Dept. of Parks and Recreation</div> |
| <div>Bureau of Land Management</div>      | <div>Impaired River or</div>                    |
| <div>U.S. Fish and Wildlife Service</div> | <div>Stream: closure in effect</div>            |





HB3932 Beaver Harvest Closure - published 12/2025

- Closure in effect
- Bureau of Land Management
- U.S. Fish and Wildlife Service
- Oregon Dept. of Parks and Recreation
- Oregon Dept. of Fish and Wildlife
- Impaired River or Stream: closure in effect

