


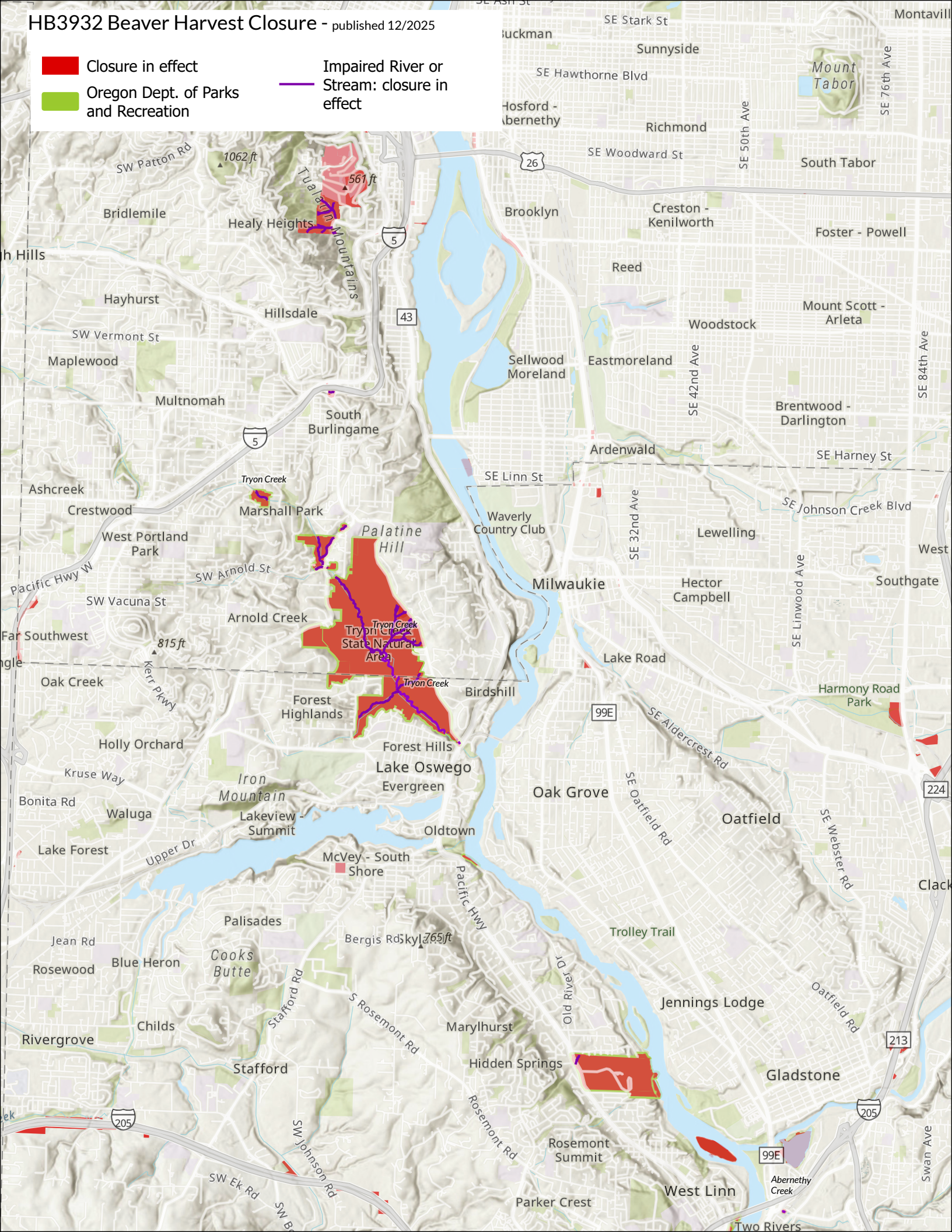


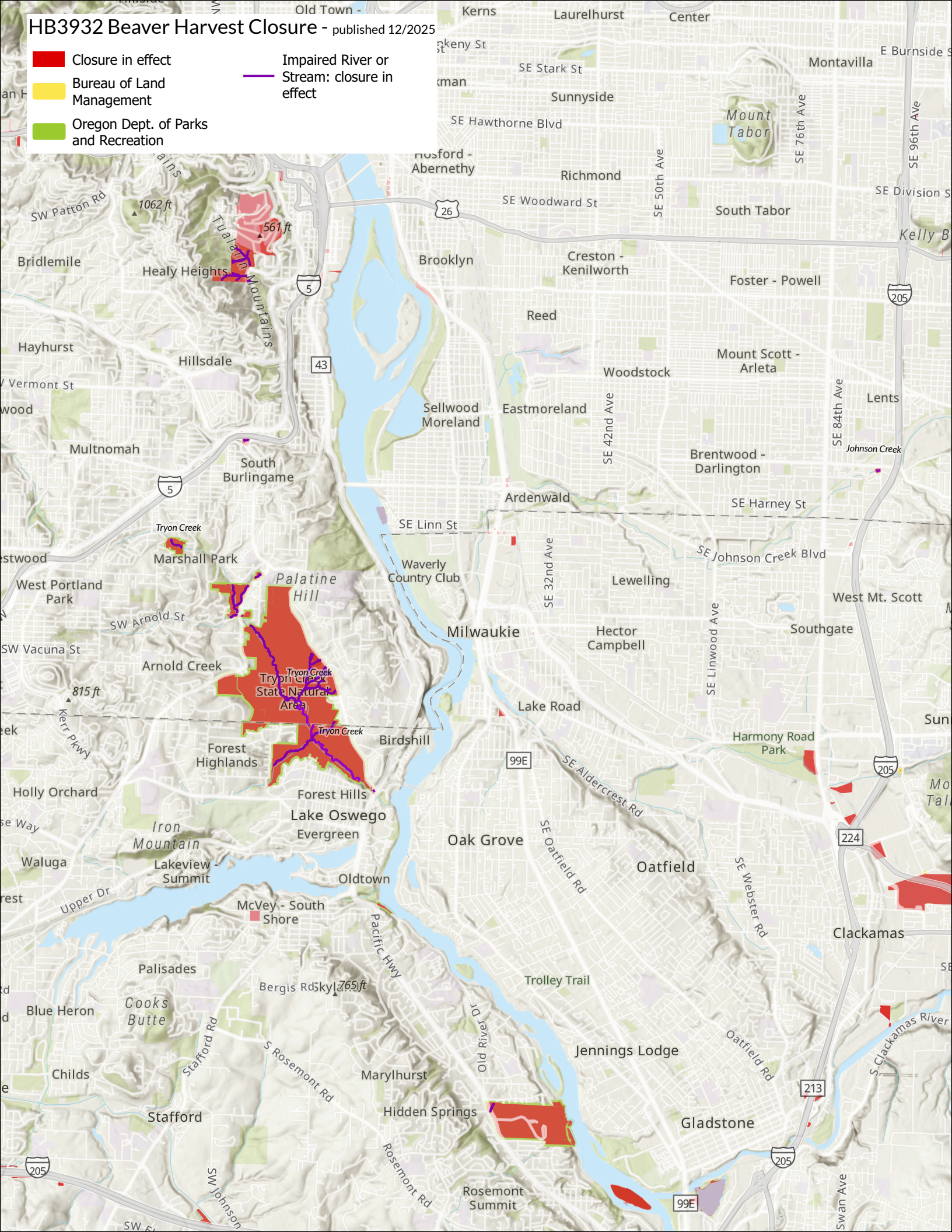
HB3932 Beaver Harvest Closure - published 12/2025

-  Closure in effect
-  Oregon Dept. of Parks and Recreation
-  Impaired River or Stream: closure in effect



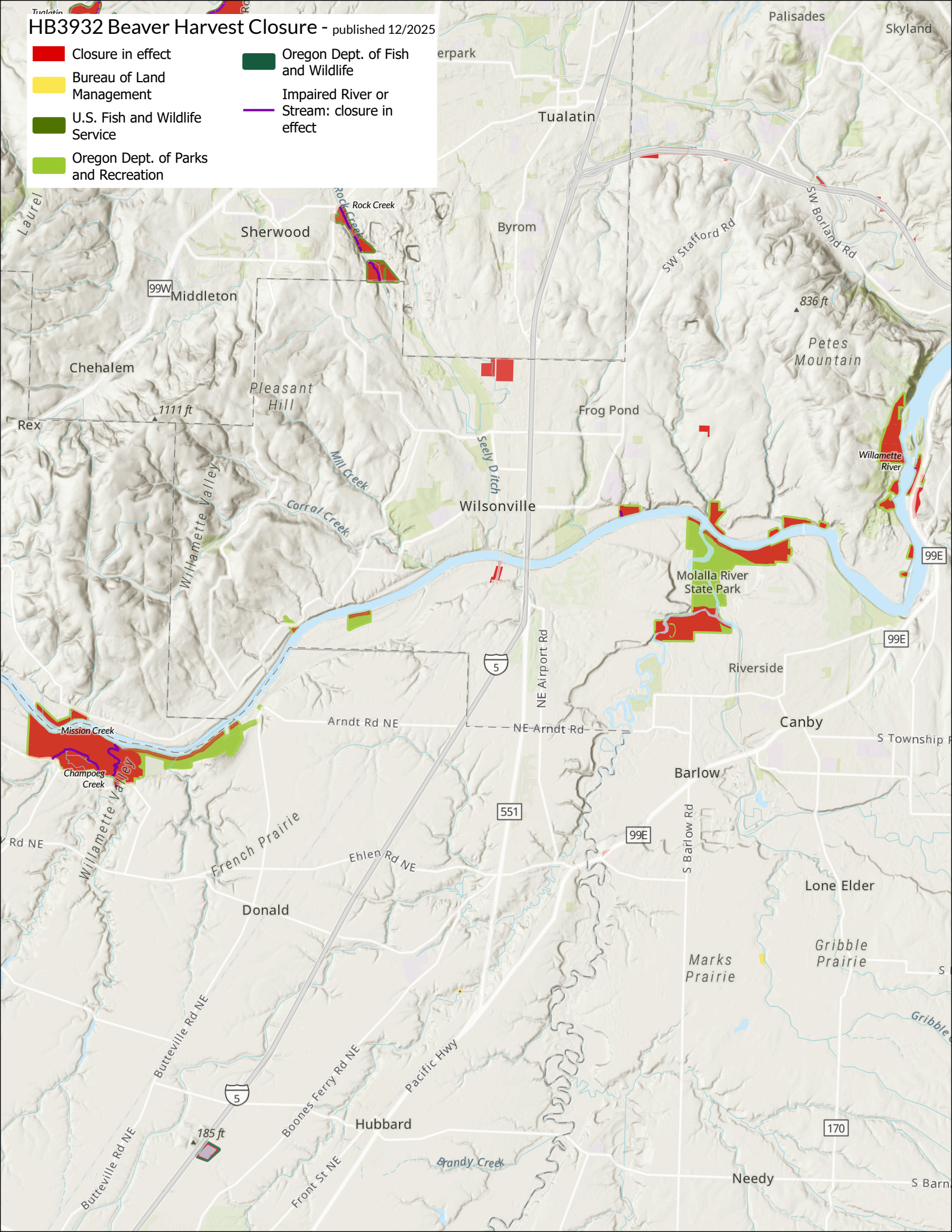
HB3932 Beaver Harvest Closure - published 12/2025

- Closure in effect
- Bureau of Land Management
- Oregon Dept. of Parks and Recreation
- Impaired River or Stream: closure in effect







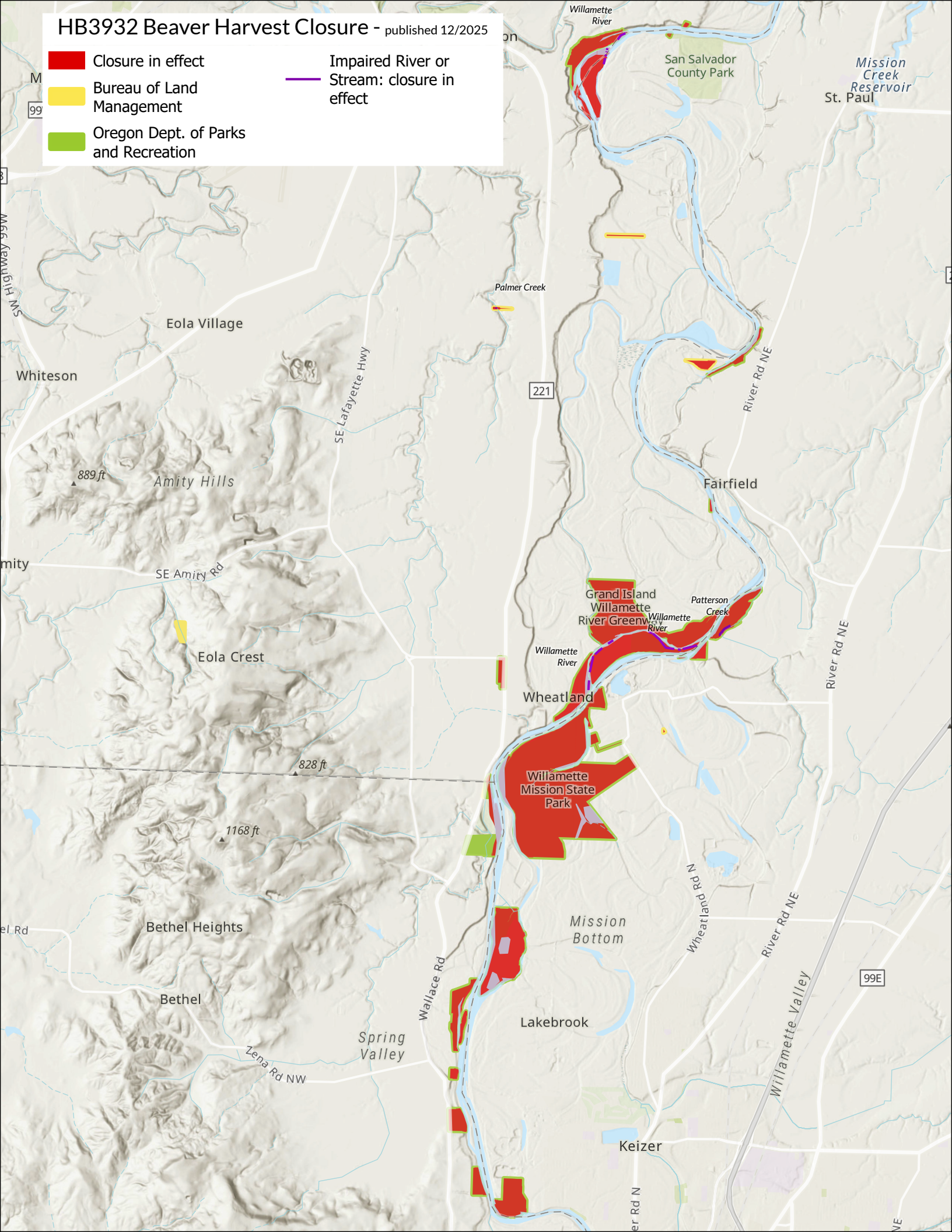
HB3932 Beaver Harvest Closure - published 12/2025

- Closure in effect
- Bureau of Land Management
- U.S. Fish and Wildlife Service
- Oregon Dept. of Parks and Recreation
- Oregon Dept. of Fish and Wildlife
- Impaired River or Stream: closure in effect



HB3932 Beaver Harvest Closure - published 12/2025

-  Closure in effect
-  Bureau of Land Management
-  Oregon Dept. of Parks and Recreation
-  Impaired River or Stream: closure in effect



HB3932 Beaver Harvest Closure - published 12/2025

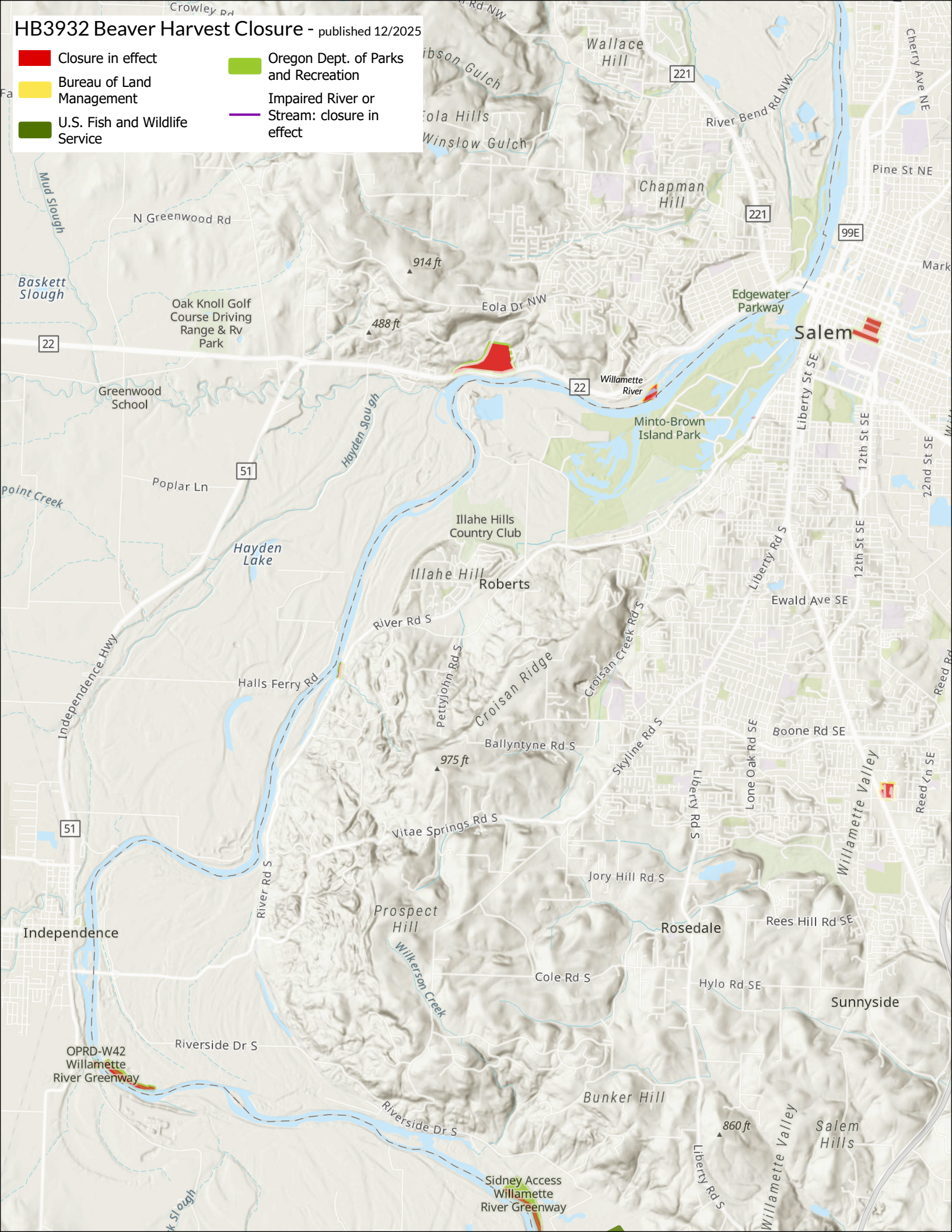
Closure in effect

Bureau of Land Management

U.S. Fish and Wildlife Service

Oregon Dept. of Parks and Recreation

Impaired River or Stream: closure in effect



HB3932 Beaver Harvest Closure - published 12/2025

- Closure in effect

Bureau of Land Management

U.S. Fish and Wildlife Service

U.S. Forest Service

Oregon Dept. of Forestry
- Oregon Dept. of Parks and Recreation

Oregon Dept. of Fish and Wildlife

Impaired River or Stream: closure in effect

