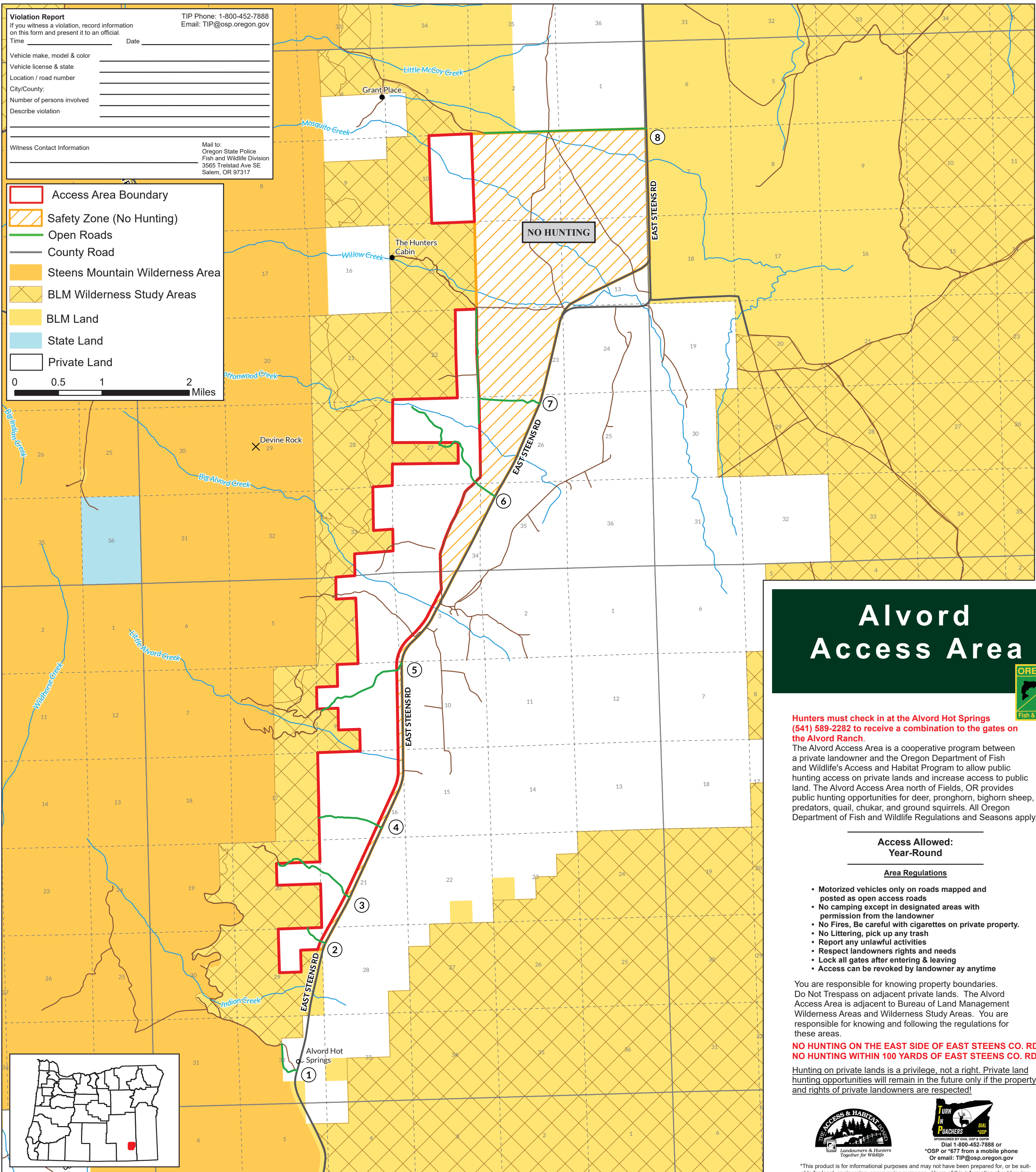


0 0.5 1 2 Miles

- Access Area Boundary
- Safety Zone (No Hunting)
- Open Roads
- County Road
- Steens Mountain Wilderness Area
- BLM Wilderness Study Areas
- BLM Land
- State Land
- Private Land



Alvord Access Area



Hunters must check in at the Alvord Hot Springs (541) 589-2282 to receive a combination to the gates on the Alvord Ranch.

The Alvord Access Area is a cooperative program between a private landowner and the Oregon Department of Fish and Wildlife's Access and Habitat Program to allow public hunting access on private lands and increase access to public land. The Alvord Access Area north of Fields, OR provides public hunting opportunities for deer, pronghorn, bighorn sheep, predators, quail, chukar, and ground squirrels. All Oregon Department of Fish and Wildlife Regulations and Seasons apply.

Access Allowed:
Year-Round

Area Regulations

- Motorized vehicles only on roads mapped and posted as open access roads
- No camping except in designated areas with permission from the landowner
- No Fires, Be careful with cigarettes on private property.
- No Littering, pick up any trash
- Report any unlawful activities
- Respect landowners rights and needs
- Lock all gates after entering & leaving
- Access can be revoked by landowner ay anytime

You are responsible for knowing property boundaries. Do Not Trespass on adjacent private lands. The Alford Access Area is adjacent to Bureau of Land Management Wilderness Areas and Wilderness Study Areas. You are responsible for knowing and following the regulations for these areas.

NO HUNTING ON THE EAST SIDE OF EAST STEENS CO. RD
NO HUNTING WITHIN 100 YARDS OF EAST STEENS CO. RD

Hunting on private lands is a privilege, not a right. Private land hunting opportunities will remain in the future only if the property and rights of private landowners are respected!



Or email: TIP@osp.oregon.gov

*This product is for informational purposes and may not have been prepared for, or be suitable for legal, engineering, or surveying purposes. Users of this information should review or consult primary data and information sources to ascertain the usability of the information.