



Oregon Wolf Conservation and Management Plan: 2025 Annual Report

Roblyn Brown - Wolf Coordinator
Brian Wolfer - Wildlife Division Deputy Administrator
Lt. Schwartz – Oregon State Police
Derek Broman - Game Program Manager
Nick Myatt – East Region Manager



**Oregon Department
of Fish and Wildlife**

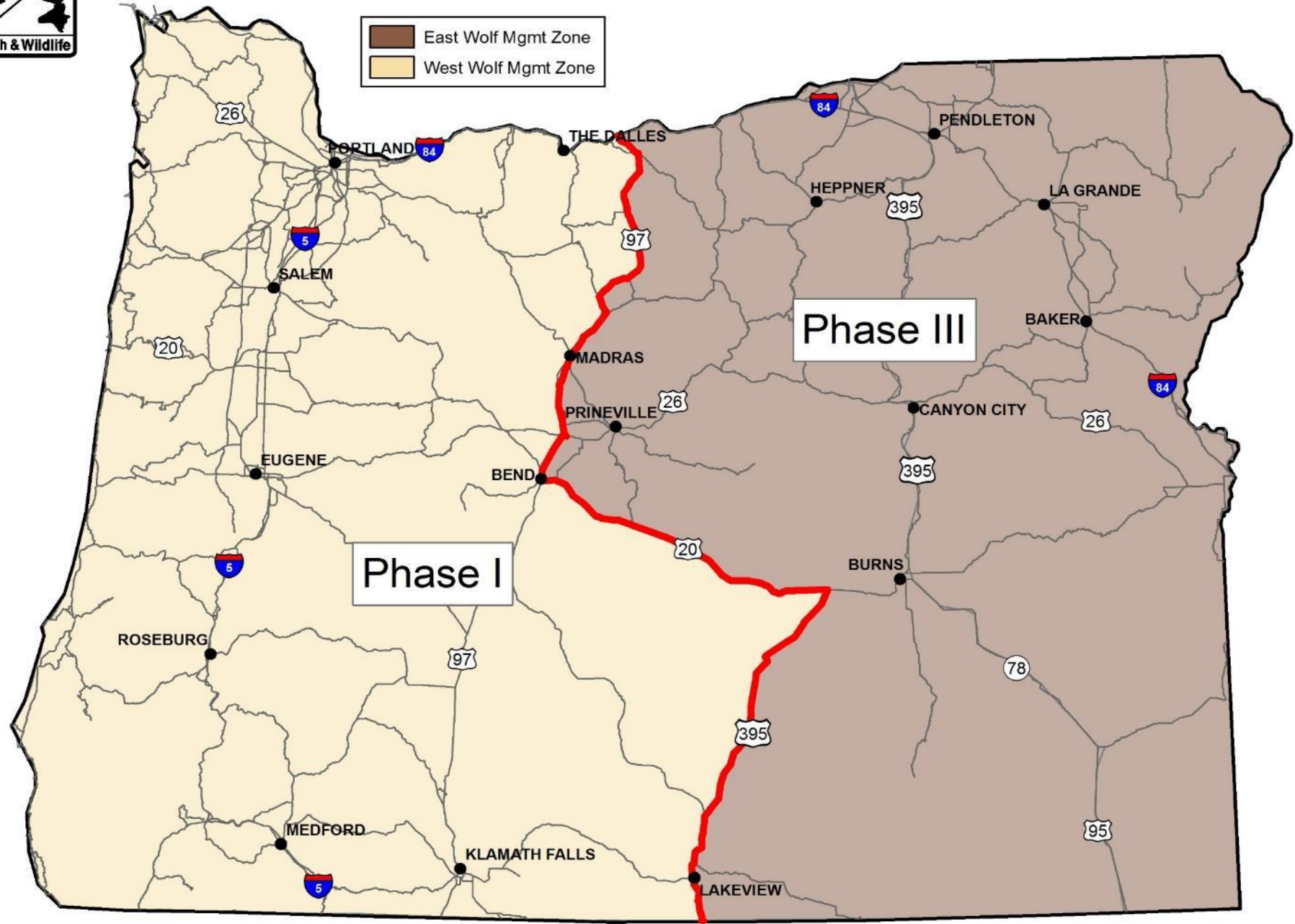
state status



Wolf Management Zones in Oregon

— Wolf Management Zone Boundary

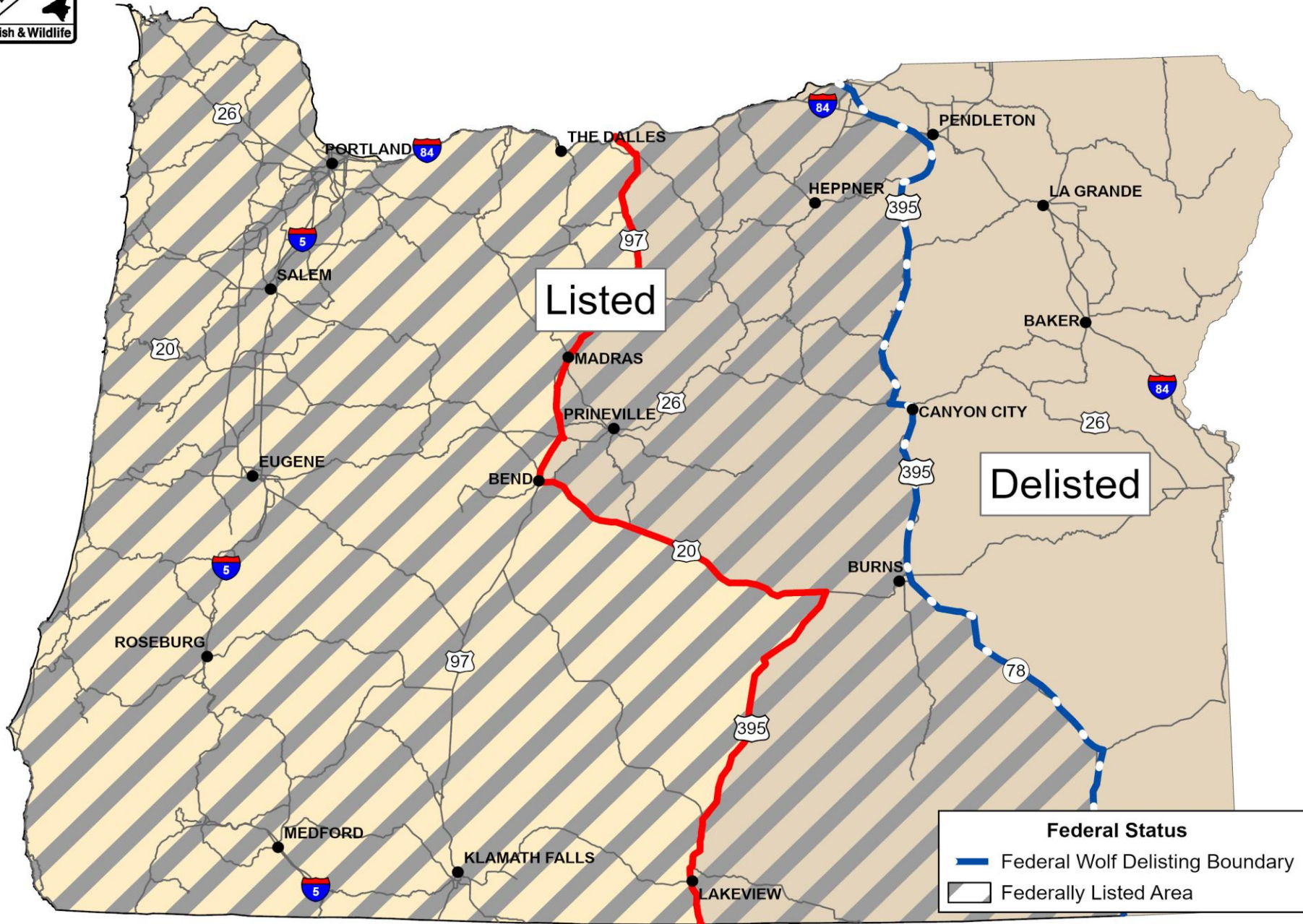
East Wolf Mgmt Zone
West Wolf Mgmt Zone



Federal Status



Wolf Management Zones in Oregon



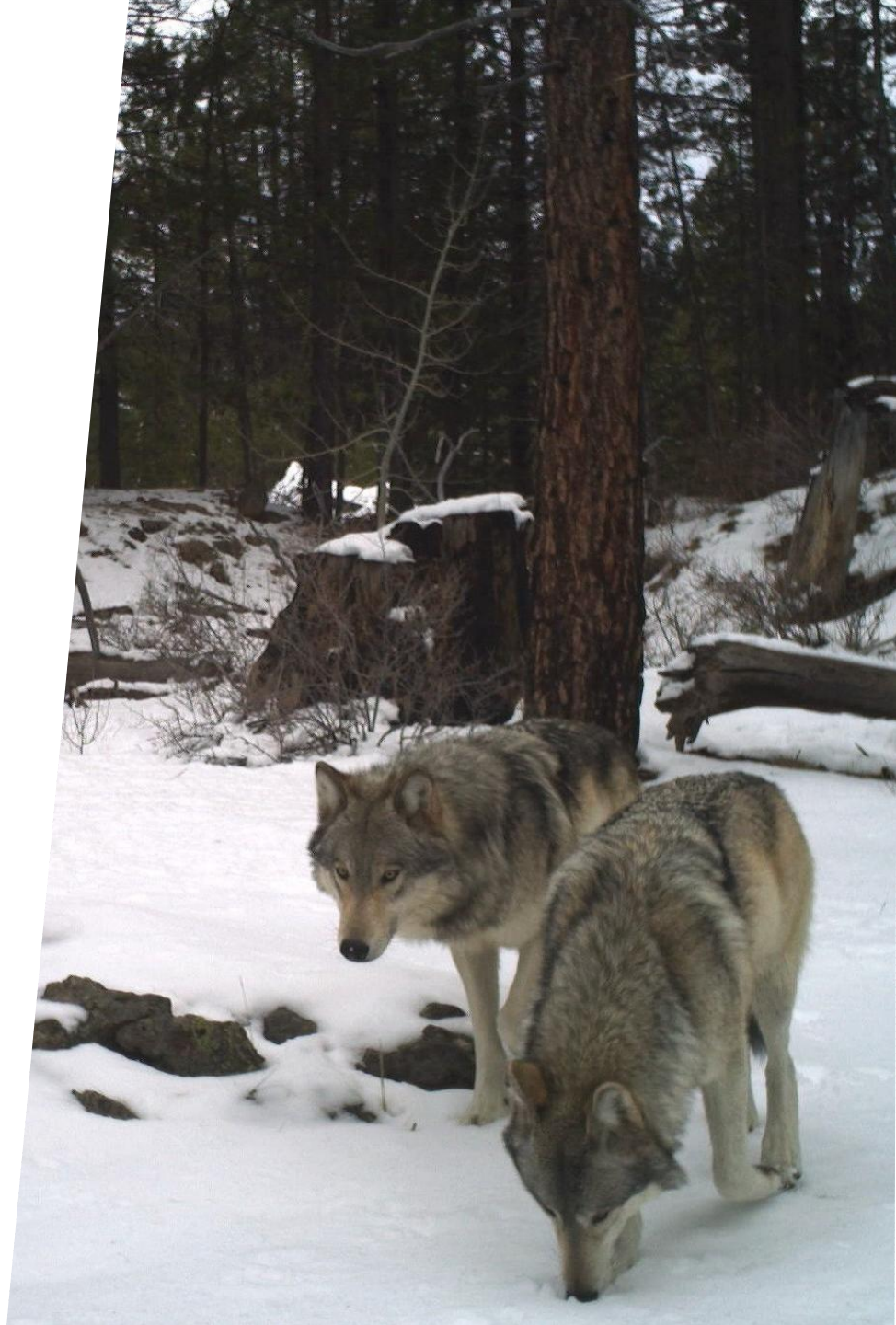
Wolf management is grounded in extensive monitoring

20,000+ Wolf location data points collected

150+ Remote cameras deployed

29 New radio-collars

58 Wolves with collars monitored



Oregon's wolf population increased by 13% in 2025

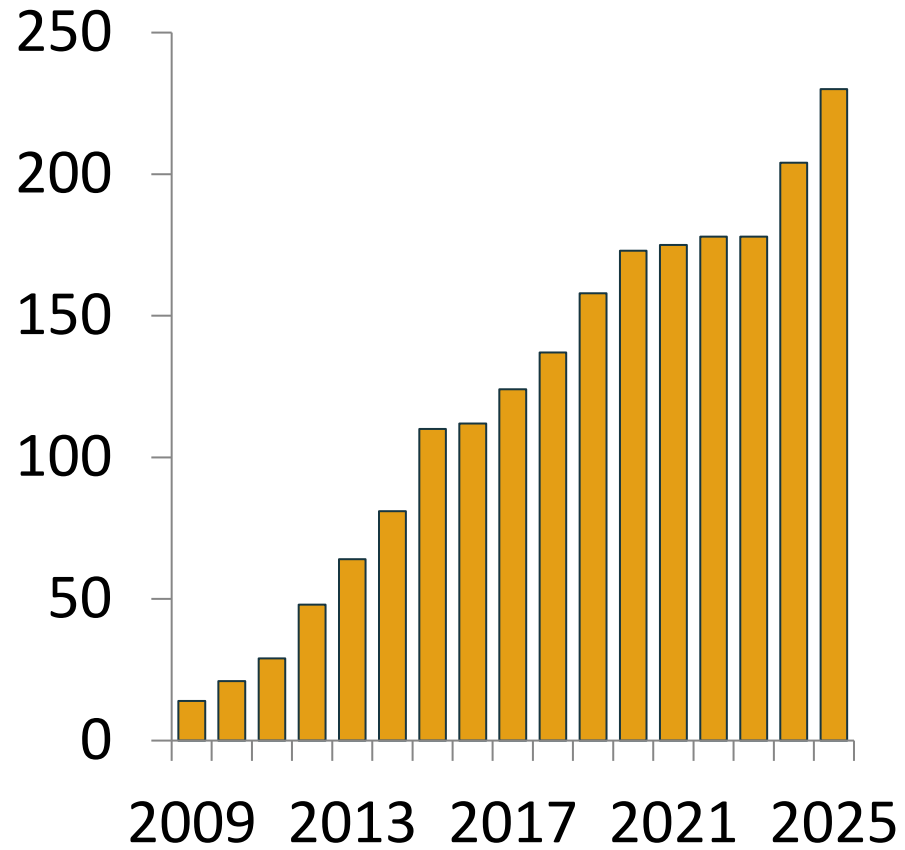
230 Wolves

30 Packs

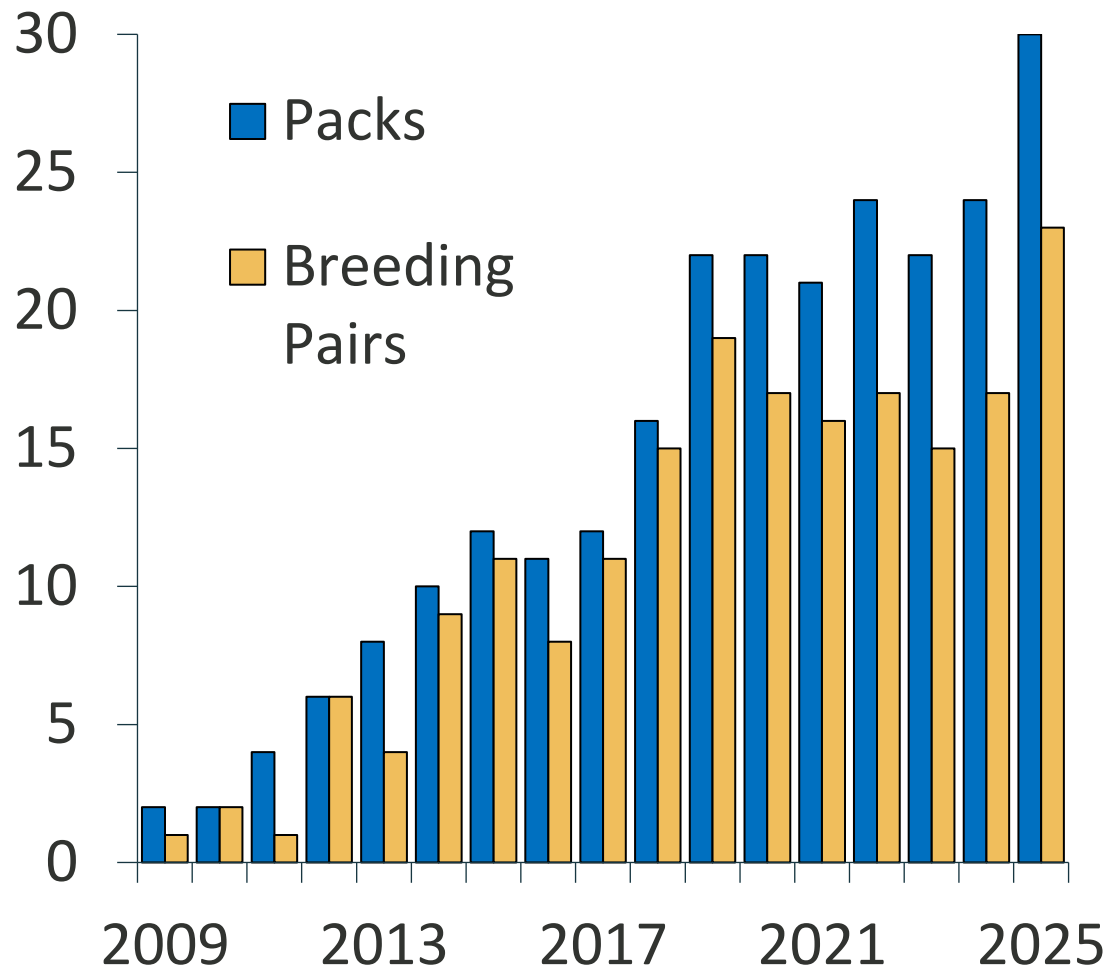
23 Breeding pairs



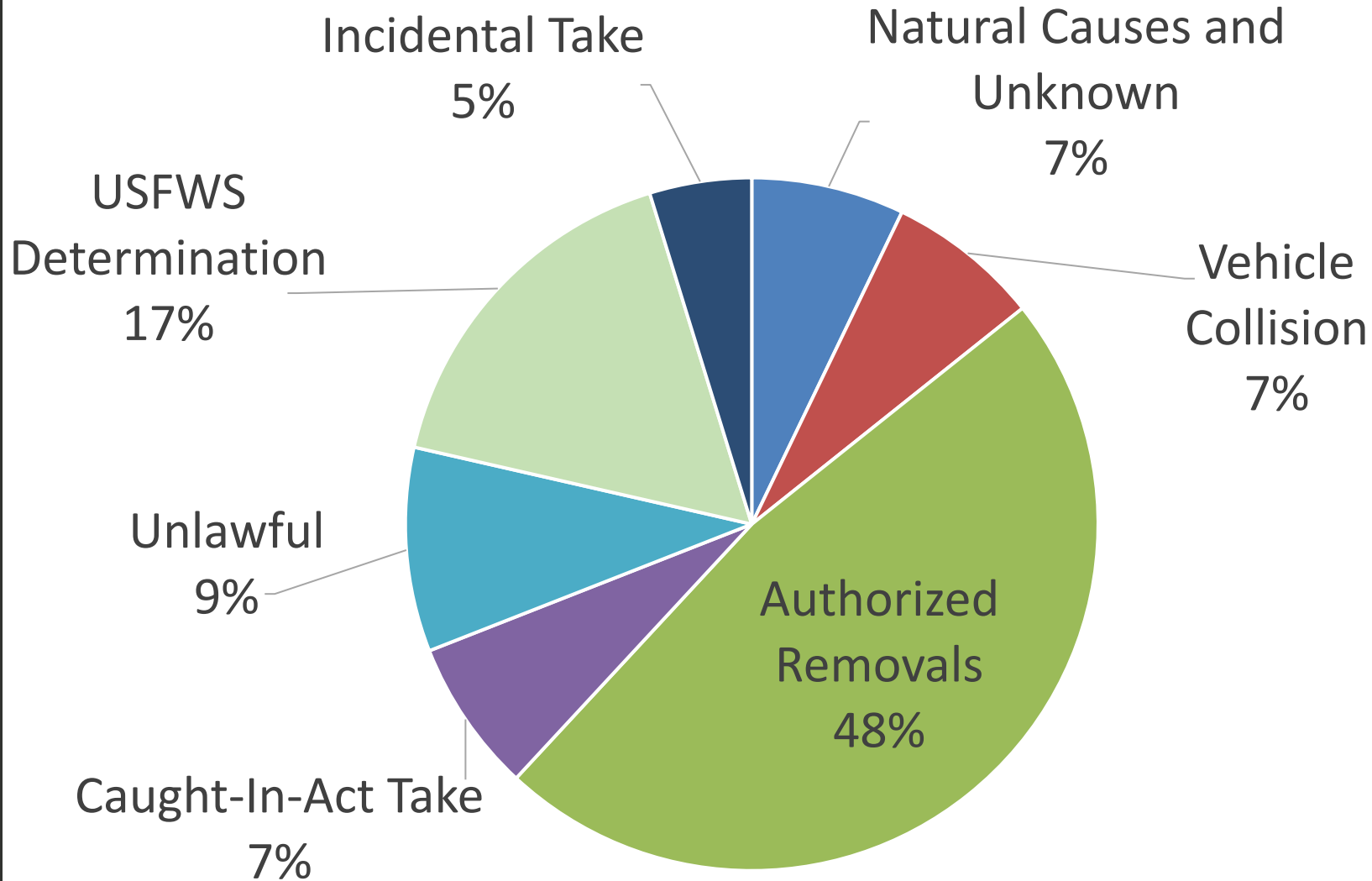
Continuing a long-term rise in wolf numbers and range



Oregon wolves: more packs, more breeding pairs



Sources of wolf mortality in 2025



WEST WMZ

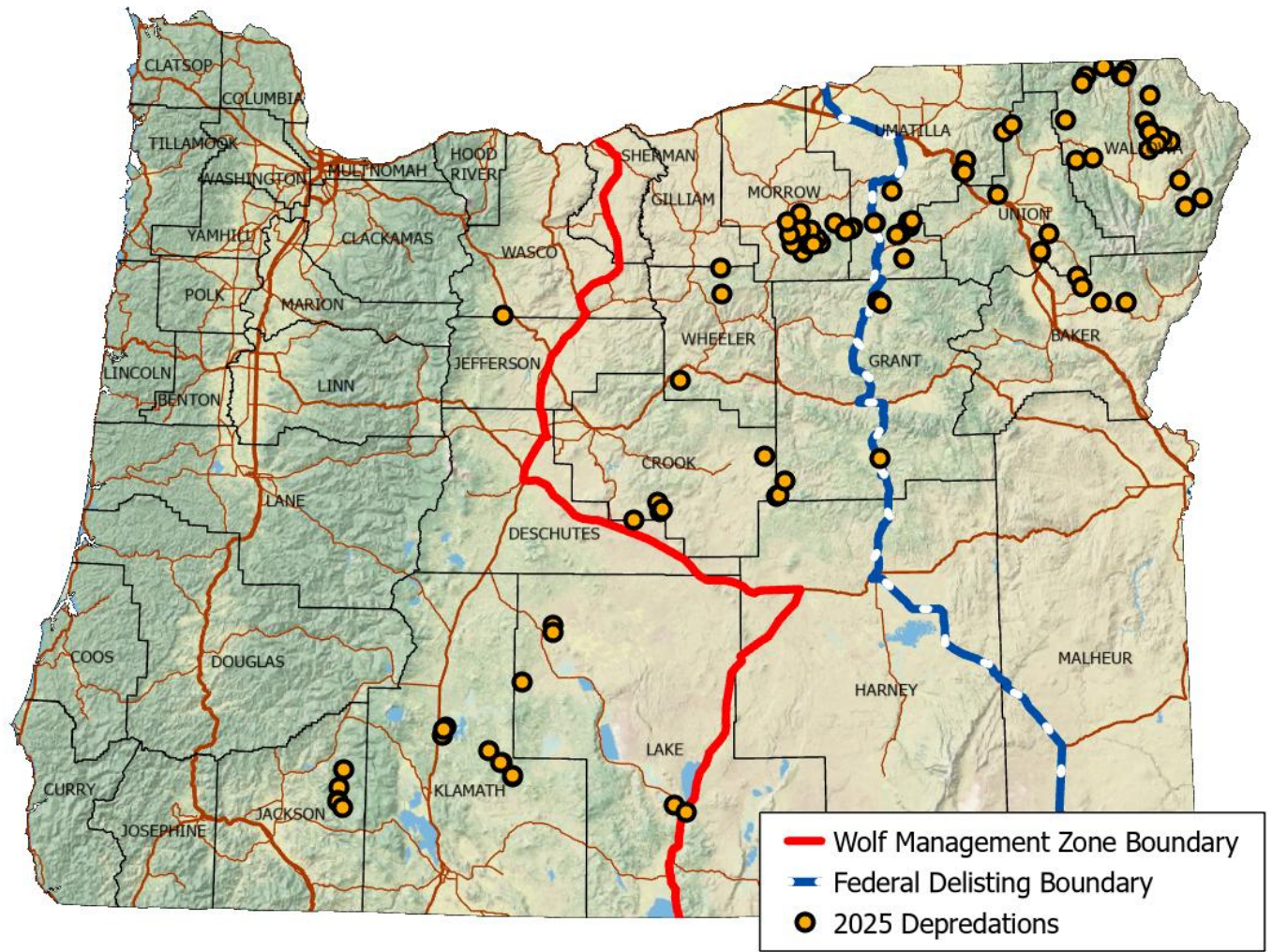
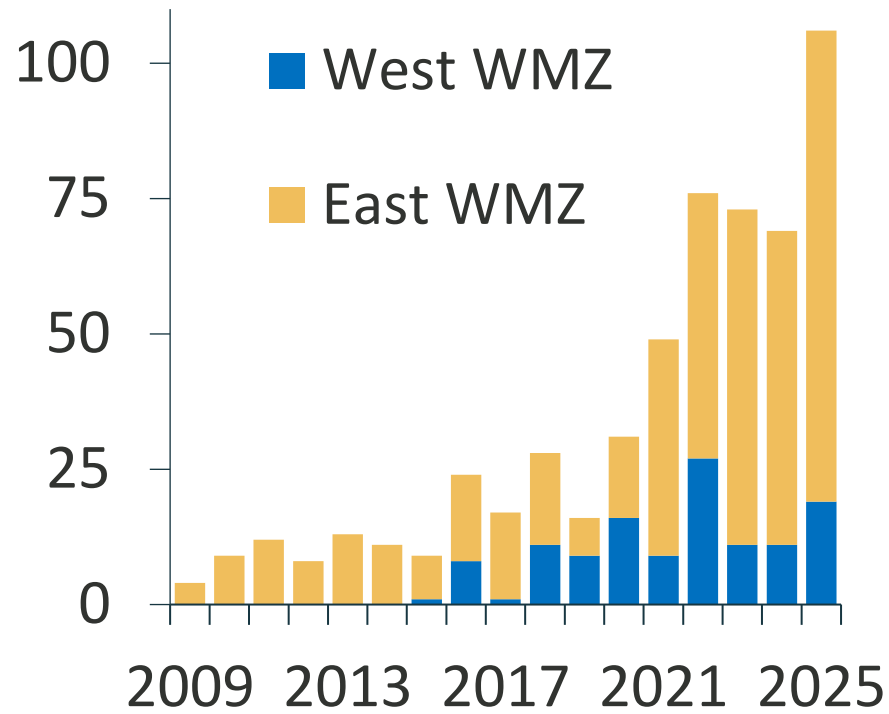
7 mortalities

EAST WMZ

35 mortalities

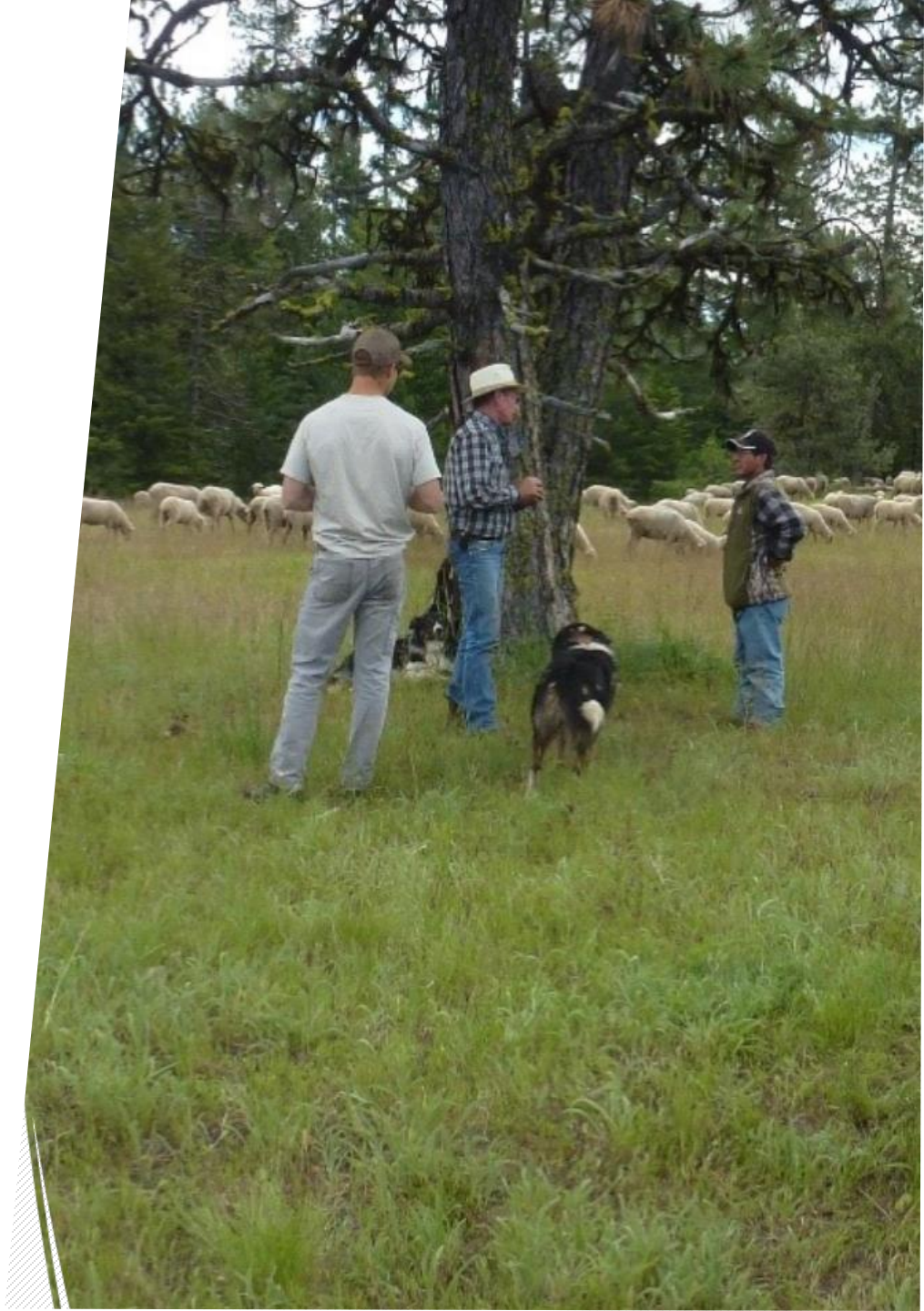
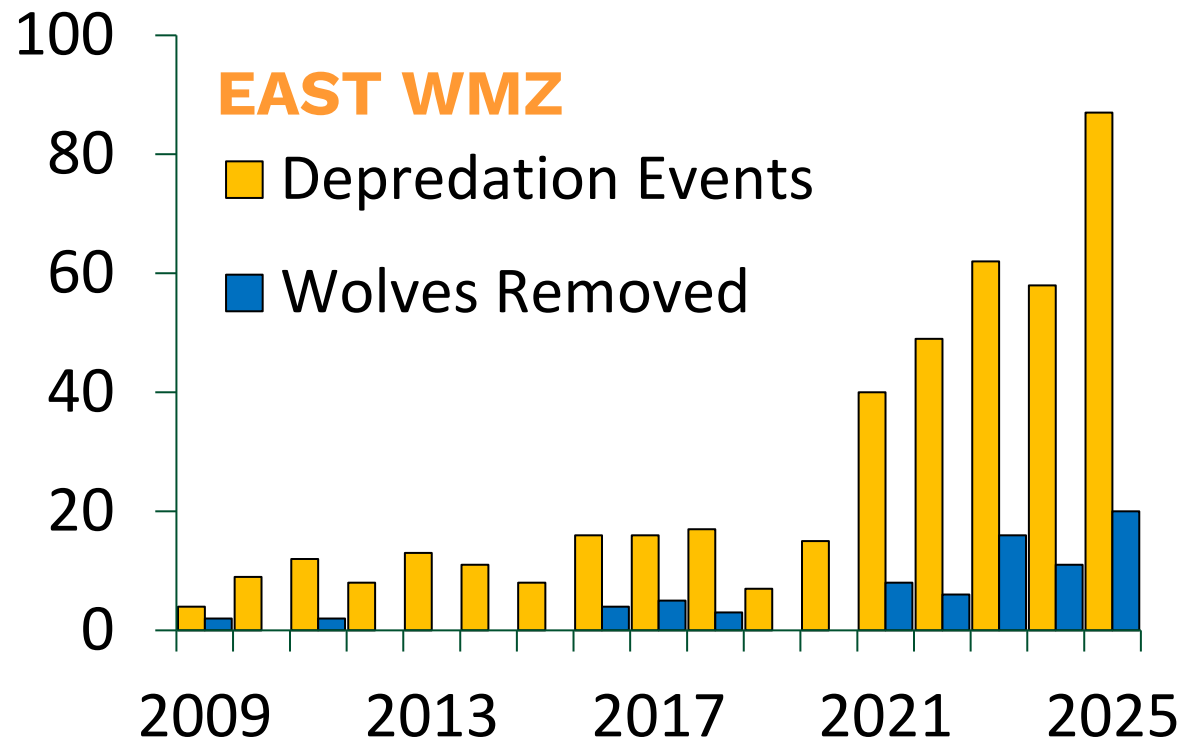


Livestock depredation increased in 2025



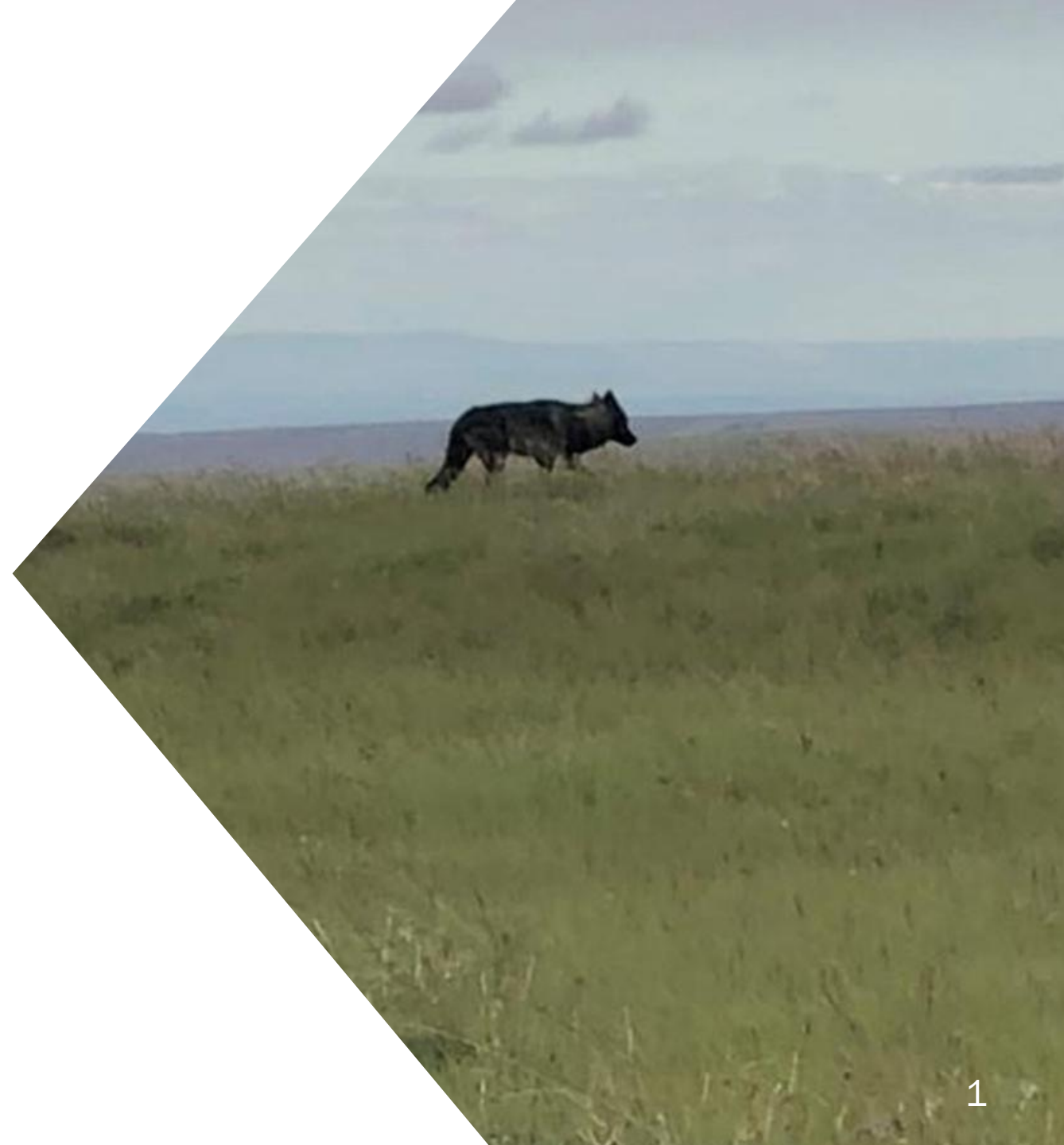
Wolf/livestock conflict management

- Proactive: non-lethal deterrence
- Reactive: targeted wolf removal



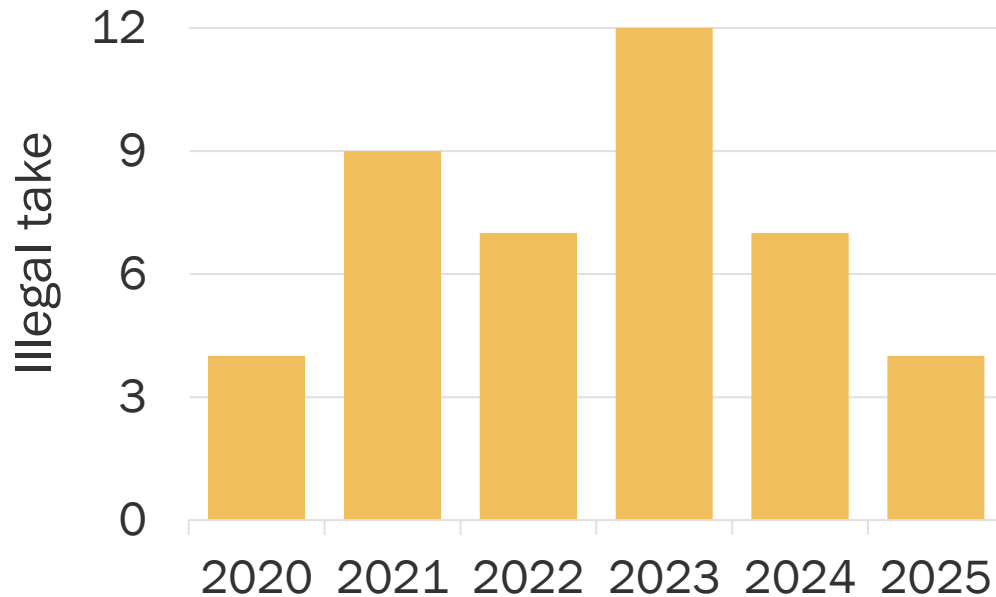
Wolf Plan Implementation Focus

- Addressing Illegal Take
- Population Monitoring
- Conflict Reduction



Focus Area: Addressing illegal take

- Increased OSP resources
- Messaging in media



Focus Area: Advancing wolf population monitoring

- New management questions with population growth
- Need for expanded monitoring capacity



From minimum counts to an integrated population model

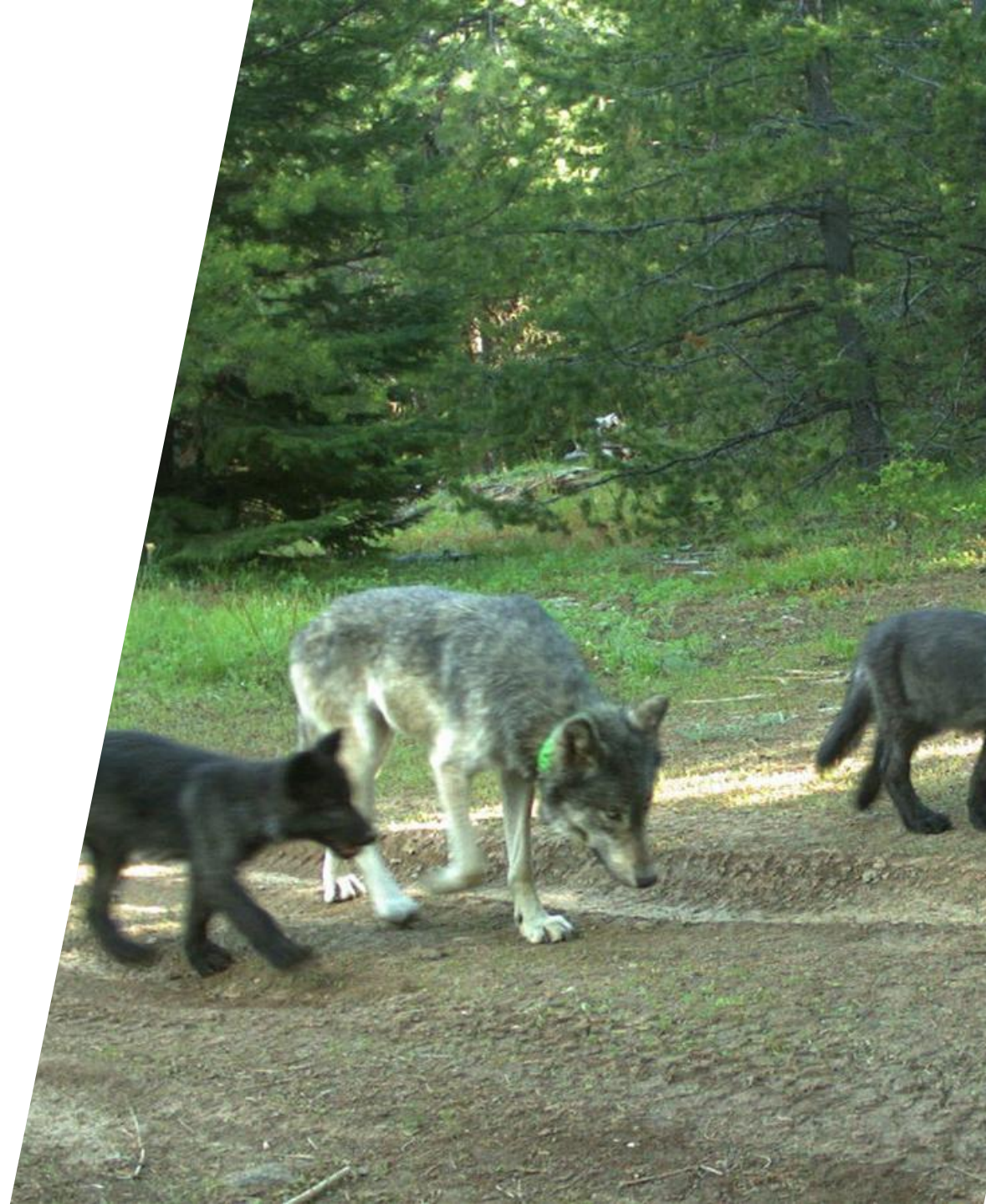
- ✓ Contract & Concept
- ✓ Identify monitoring metrics and program

2026 Implement pilot monitoring in NE Oregon



Focus Area: Reducing Wolf/Livestock Conflict

- Proactive and responsive practices
- Producer communications and engagement
- Resource capacity and deployment
- Producer and staff well-being



From conflict to collaboration: On the ground support for producers

- Partnerships
- Increased resources
- Internal change
- Collaboration
- Communication



A year of hands-on outreach and producer assistance

- One-on one
- Group presentations
- New education resources





Looking to the future

- Lean on experience
- Adaptive approach
- Sustainable practices
- Emerging work in urban interface
- Evaluate and adjust

Questions?



**Oregon Department
of Fish and Wildlife**

