



Sauvie Island Beaches: Parking and Traffic Management



**Oregon Department
of Fish and Wildlife**



Sauvie Island Wildlife Area

~11,500 acres, established in 1947 for wildlife purposes

The area provides important refuge for a biologically diverse community of wildlife in a highly developed area:

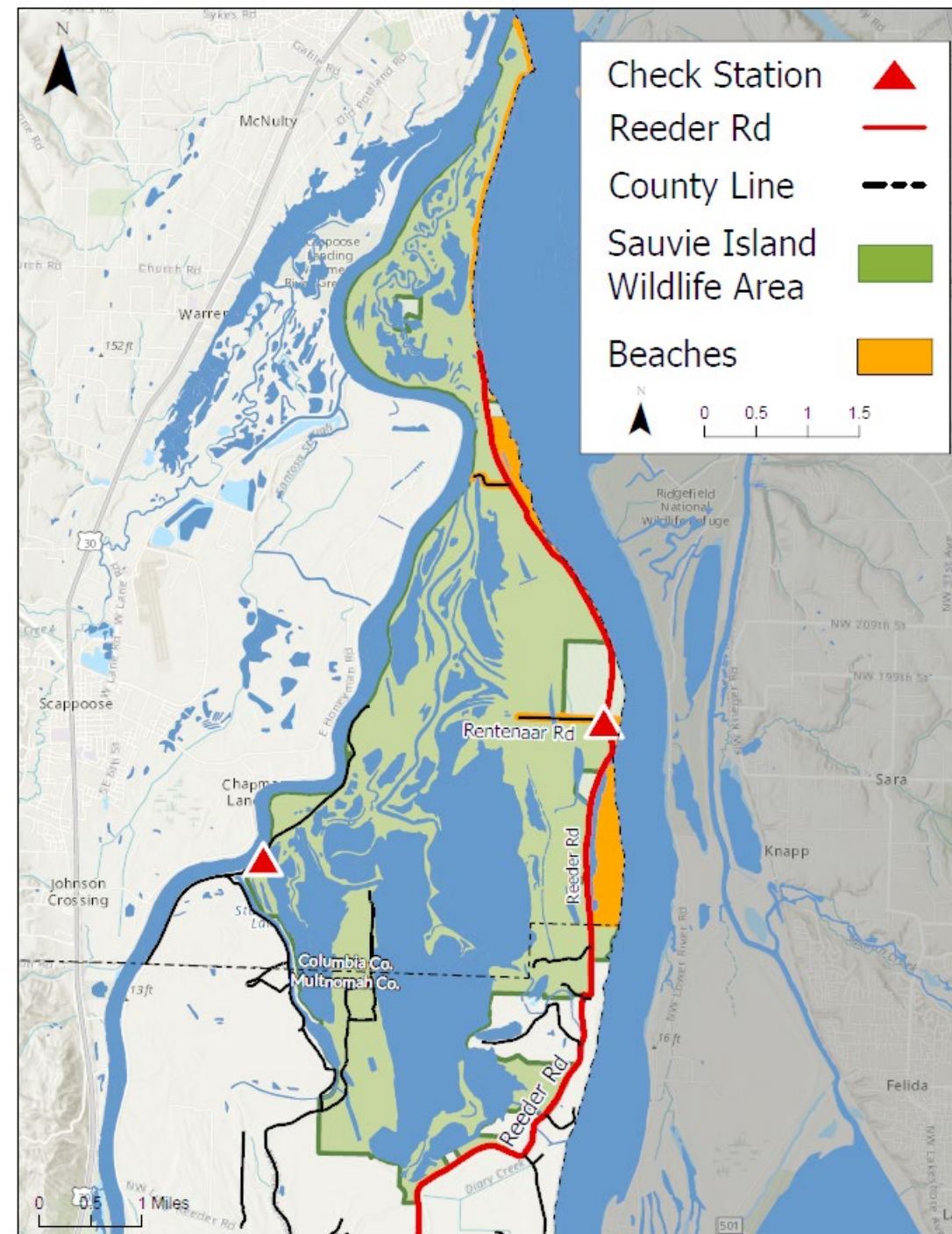
275 bird species

37 mammal species

12 species of reptiles/amphibians

Numerous spp. of fish and plants

- Important stop on the Pacific Flyway, preserves habitat for many kinds of waterfowl
- 750,000 visitor days/year

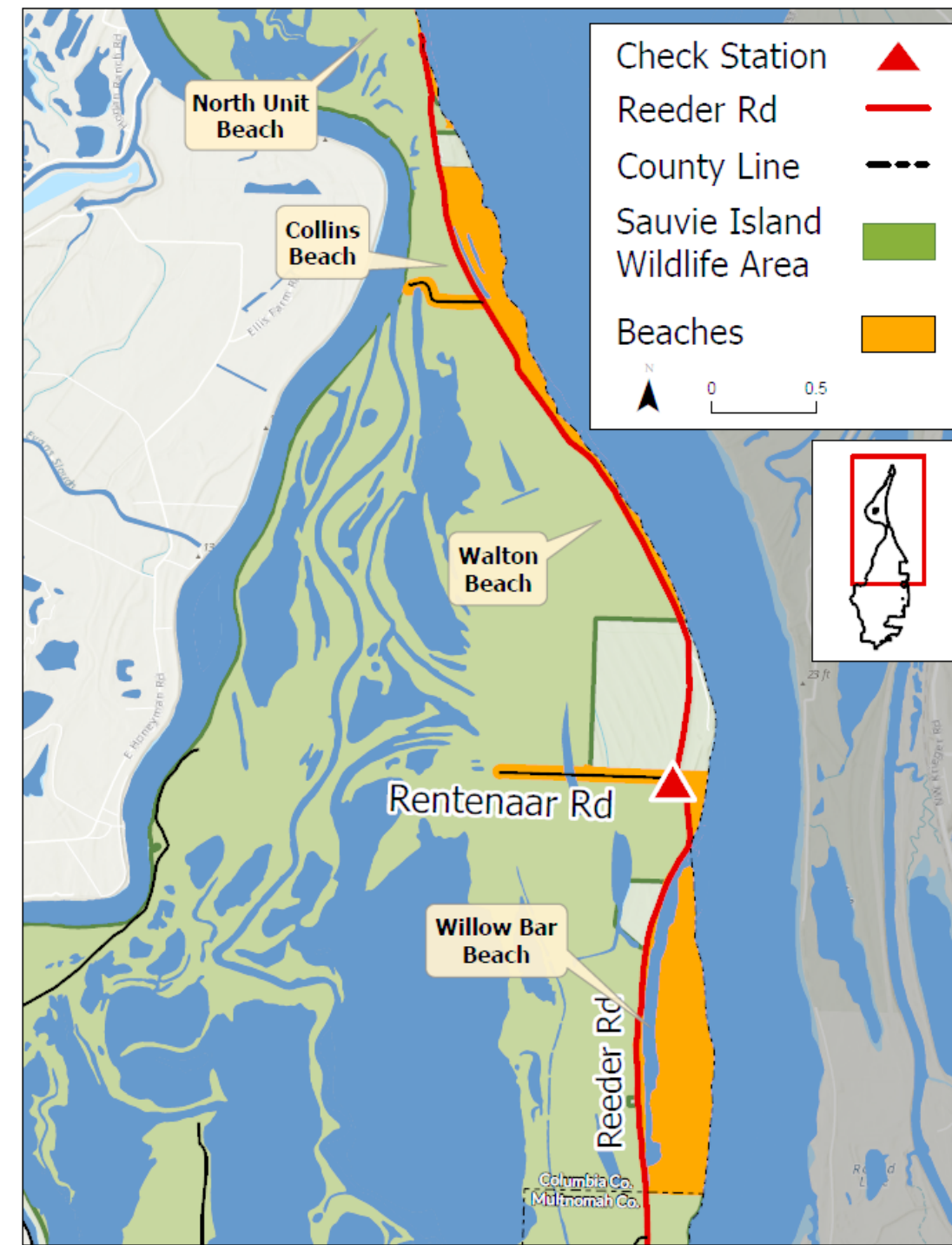


Sauvie Island Beaches

More than half the visitors are using the beaches

High visitation to beaches in summer has created significant wildlife impacts and safety concerns, such as:

- Fires, impacts to riparian vegetation, soil damage from vehicles driving out on the beach, increased trash and waste, and wildlife disturbance
- Vehicles outnumbering parking spaces by a large margin, leading to traffic jams and safety issues
- Emergency vehicles unable to provide emergency response due traffic jams and double parking



Traffic and Congestion at Sauvie Beaches

- Study found that parking demand exceeds capacity by 24% to more than 80% on peak days
- Double and triple parking block lanes and trap vehicles along Reeder Road
- Narrow access road becomes congested as drivers search for parking
- Lack of EMS and fire response



2018 Alcohol Ban



Parking and Traffic Issues and Examples

- 2017: OSP closed Reeder Road due to heavy traffic and lack of parking
- 2020: Beach Traffic backed up for 3 miles on Reeder Road
- 2022: 1688 vehicles visited the beach at one time with only 928 parking spots available



Summer 2025 Pilot Goals

- Reduce impacts to wildlife habitat, improve human safety, and address emergency vehicle access
- Improve the user experience for beachgoers
- Ensure access for landowners and their guests
- Reduce the investment of OSP time, so they can focus on enforcing fish and wildlife rules



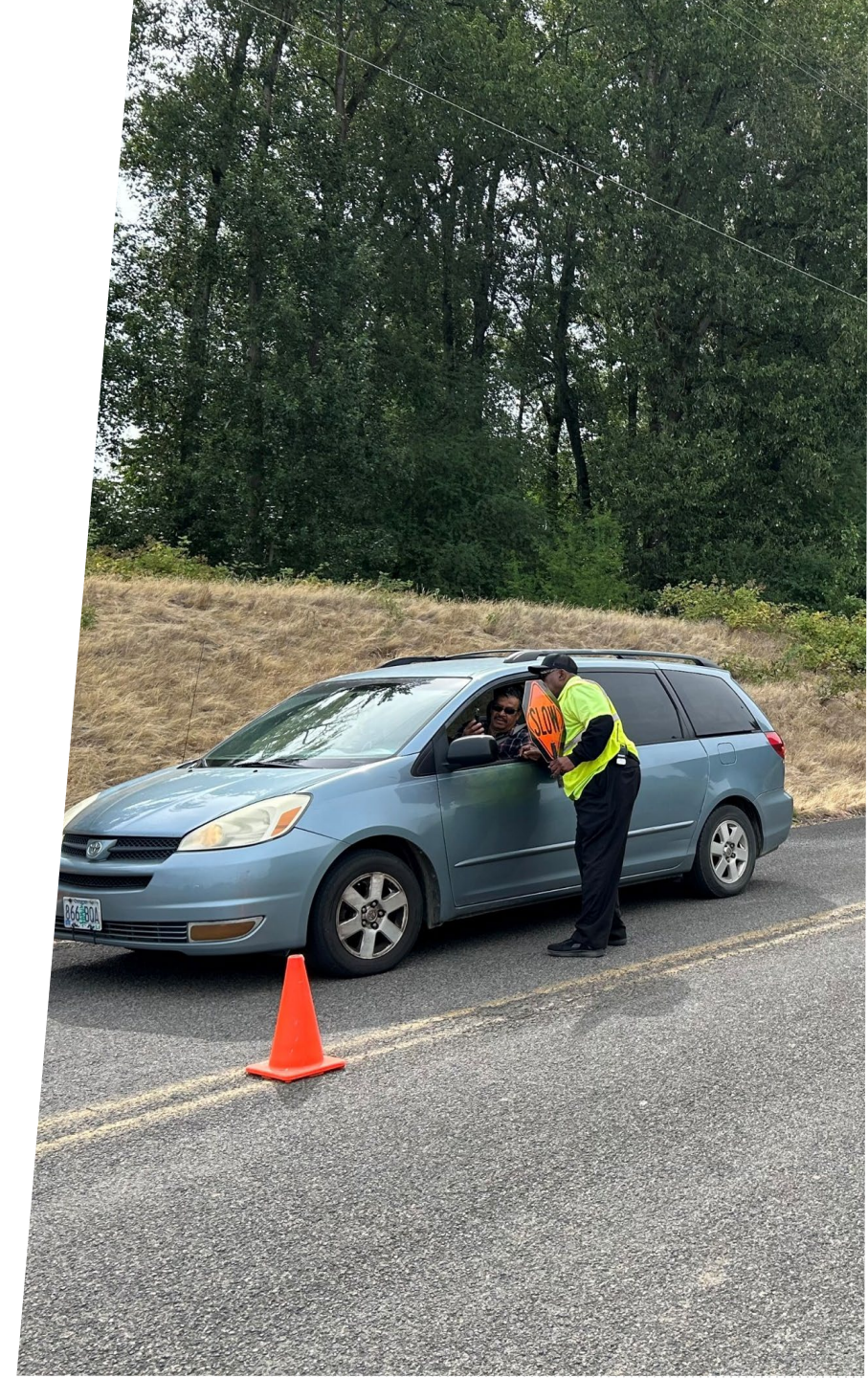
Beach Parking: Public Outreach

- Reached out directly to
 - Landowners
 - Business owners
 - ELS vendors
- ODOT road-side reader board on Hwy 30
- 4 road-side reader boards on Sauvie
- 4 billboards on Hwy 30
- Developed a dedicated website
- Created posters and business cards with QR code
- Translated materials in Spanish
- Placed flyers on cars
- Issued a press release
- Gave TV interviews
- Posted on social media



Beach Parking: How It Functioned

- Checkpoint on Reeder Road
- Pass + standard parking permit required
- Pass quantities adjusted based on real-time parking capacity
- Stopped issuing passes when parking became limited
- Vehicles without required permits were turned away at the checkpoint



Pilot Results

- Peak traffic kept below 1,000 vehicles
- Emergency access maintained
- Reduced calls to OSP for service
- Fewer habitat impacts



<https://www.pinesnvines.com>

Customer Service Survey

- Survey respondents reported smoother parking and reduced congestion with organized flow and courteous staff.
- Common complaints included:
 - Confusion over needing the ODFW Parking Permit + Beaches Pass
 - Poor cell service and ELS website usability
 - Lack of clear signage before arrival
 - Frustration with long lines



PARKING
AT SAUVIE ISLAND BEACHES

P GET YOUR BEACHES PASS AND PARKING PERMIT AHEAD OF TIME!

Starting July 4th - Labor Day, Sept. 1, 2025

NEW THIS YEAR **Sauvie Island Beaches Pass**
Free Beaches Pass required summer weekends & holidays

A new limited entry parking pilot program is in effect to manage ongoing parking and public safety issues along the beaches. Both a **Wildlife Area Parking Permit** (\$10 daily) and **Sauvie Island Beaches Pass** (free) will be required to park at the beaches on summer weekends & holidays.

BEACHES PASSES ARE LIMITED, PURCHASE ONLINE AHEAD OF TIME

It's as easy as...

1 SCAN 2 PURCHASE 3 GO

1. Scan the QR code or visit HUNTFISHOREGON.COM
2. Select **GUEST CHECKOUT** or **ACCOUNT LOGIN**
Guests: Provide email to receive Pass and Permit.
3. Print your Beaches Pass and Permit **OR** be ready to show a screenshot if asked
4. Display printed documents on car dash or write down your **ODFW ID#** or Transaction # on any piece of paper as it appears on your permit and pass and display in the front or rear window.

Learn more about parking at Sauvie Island Beaches at: sauvieislandparking.com
FOR ASSISTANCE: 503-947-6101 Mon-Fri 8-5pm

OREGON DEPARTMENT OF FISH & WILDLIFE

Proposed Changes:

0AR 635-008-0053 & 635-008-0147

- New Sauvie Island Beaches Parking Permit
- Required at Walton, Collins, and North Unit Beaches
- June 15–Labor Day
- Standard Wildlife Area Parking Permit still good on the rest of the wildlife area and on beaches outside of the summer season
- \$10 daily, \$30 seasonal (limited)
- Allows ODFW to limit the number of permits.



Public Correspondence

- Feedback mixed
- Concerns about cost
- Desire to use the Annual Wildlife Area Parking Permit on summer weekdays
- Misunderstanding the proposed permit limits
- Concerns from former pre-paid vendors



Modified Proposed Changes: **0AR 635-008-0053 & 635-008-0147**

- New Sauvie Island Beaches Parking Permit
- Required at Walton, Collins, and North Unit Beaches
- June 15–Labor Day only on weekends and holidays
- Standard Wildlife Area Parking Permit still good on the rest of the wildlife area, and on beaches on weekdays during the summer and anytime outside of the summer season
- \$10 daily, \$30 seasonal (limited)
- Allows ODFW to limit the number of permits.



Plan for 2026

- Implement an early and robust education campaign
- Hire two ODFW seasonals and finalize contracting with a traffic management company
- Begin selling Sauvie Island Beach Parking Permits
- Establish the Reeder Road checkpoint
- Check permits every weekend and holiday from June 15 – Labor Day



Staff Recommendation:

Adopt modified proposed changes to
OAR 635-008-0053 & 635-008-0147



