



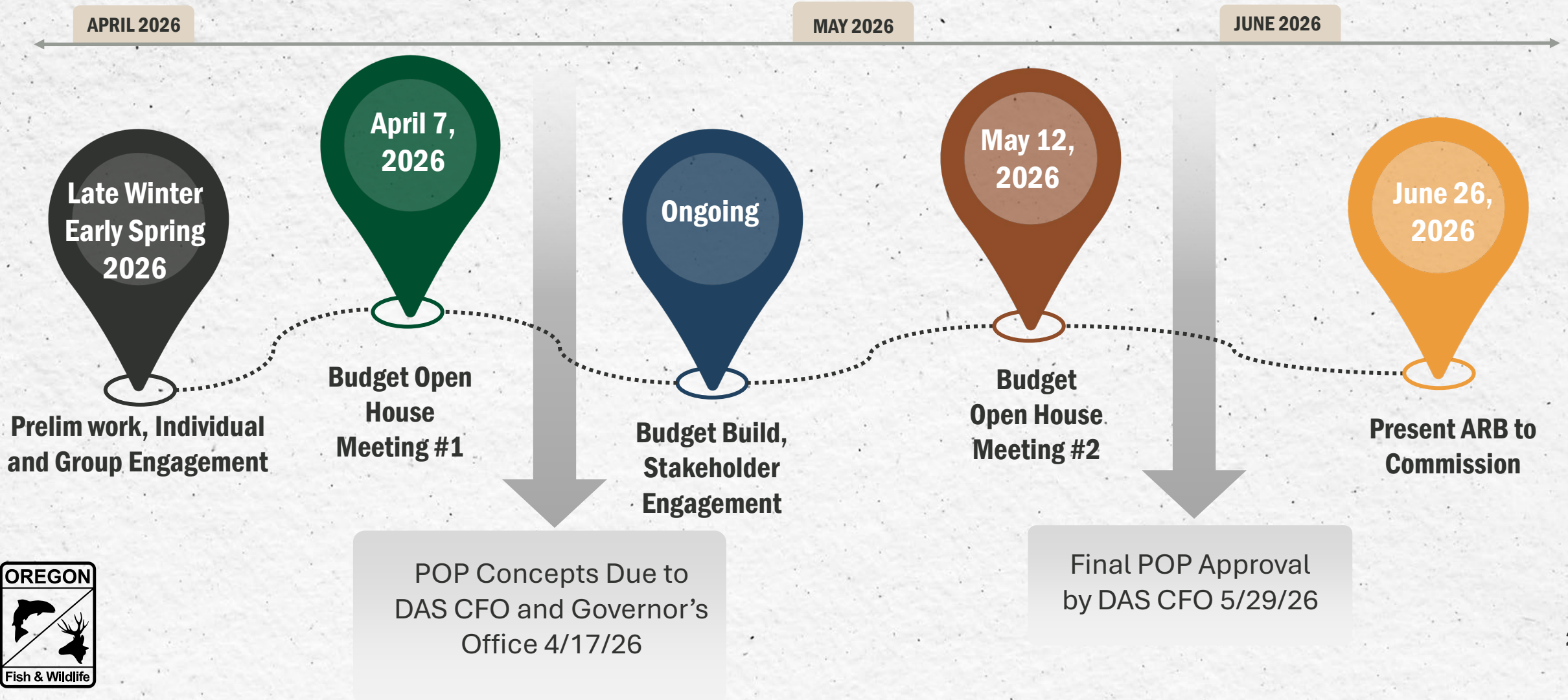
2027-2029 Agency Request Budget

June 26, 2026



**Oregon Department
of Fish and Wildlife**

2027-29 Budget Development:



OREGON DEPARTMENT OF FISH & WILDLIFE



MISSION

To protect and enhance Oregon's fish and wildlife and their habitats for use and enjoyment by present and future generations.



Building our Budget With Intention

- Advances the **Resiliency of Species, Lands and Waters** (E.O. 25-26)
- Anticipates climate impacts & implements **Landscape-Scale, Forward-Thinking** solutions
- Builds on **Working Lands** partnerships
- **Serves All** who live and recreate in Oregon
- Leverages **Know, Plan, Do** framework for success
- Grounded in **Collaboration**



Public Engagement Process

- Formal Budget Open House Meetings
- Regular check-ins and feedback from stakeholders
- Online form to collect questions and comments
- Recordings and slides posted online
- All written comments received included in Attachment 6



go.MyODFW.com/2027-29Budget

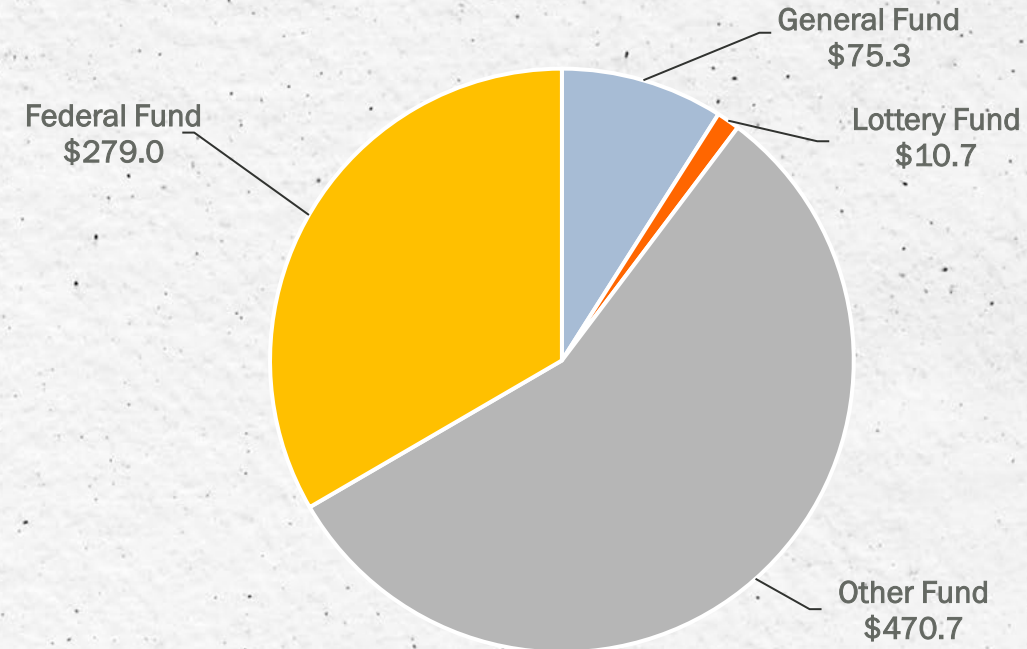
2027-29 Budget Development: Instructions from Governor & DAS

- General Fund and Lottery Fund Packages must be self-funded
- Proposed investments are budget neutral (no additional revenue requests)
- Focus on maintaining core operations & customer service
- Governor's pre-approval process similar to 2025-27 instructions
 - Incremental review and approval by DAS and Governor's Office



2027-29 Agency Request Budget

	2025-27 Legislatively Adopted (millions)	2027-29 Current Service Level (millions)	2027-29 Agency Request Budget (millions)	ARB % of Total	ARB Increase from 2025-27 LAB
General Fund	\$80.2	\$71.9	\$75.3	9.0%	(\$4.9)
Lottery Funds	\$9.9	\$10.7	\$10.7	1.3%	\$0.8
Other Funds	\$311.2	\$328.1	\$470.7	56.3%	\$159.5
Federal Funds	\$209.5	\$225.7	\$279.0	33.4%	\$69.5
Total Funds	\$610.8	\$636.4	\$835.7		\$224.9**
Positions	1,349	1,345	1,450		
FTE	1,169.02	1,166	1,265.42		



**All figures are preliminary

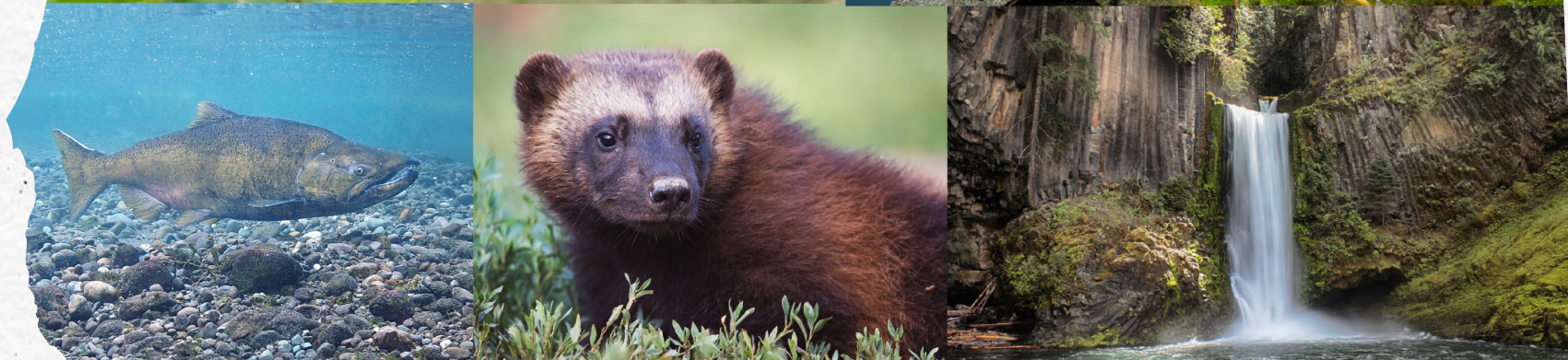
**Increases are driven by investments in the following categories:

- Implementation of HB 4134: \$65M (Policy Packages 101-104)
- Utilization of existing other fund revenues: \$3M (Policy Packages 105-110)
- Capital Infrastructure Projects: \$131M (Policy Packages 111-118)
- The balance of the remaining increase is comprised of the removal of one-time investments and other adjustments, and addition of inflationary increases to positions and programs (\$26M)



HB 4134

**Historic
Advancement
for Conservation
in Oregon**



2027-29 Projected HB 4134 Revenues: ODFW Programs



Wildlife
Connectivity

\$3.1M



Oregon
Conservation
Recreation Fund

\$3.1M

2027-29



Wildlife
Stewardship

\$1.2M



Recovering
Oregon's
Wildlife

\$55.7M



2027-29 Policy Option Packages



HB 4134

Helping Oregon communities thrive alongside wildlife—reducing conflict, strengthening public safety, and fostering shared stewardship.

POP 102 Wildlife Stewardship

Grant support for Wildlife Rehabilitation Facilities

(\$200k + 50K carryover)

Urban Biologists (3 FTE; \$830k)

Wolf Biologist (1 FTE; \$277k)

Outreach and Education (\$50k carryover)

2027-29

Wildlife
Stewardship

\$1.4M



2027-29 Policy Option Packages



HB 4134

Supporting actions to enhance connectivity of landscapes so species can fulfill their life history needs.

POP 103 Wildlife Connectivity

Partner-Implemented, On-The-Ground Connectivity Projects (\$1.76M + 300K carryover)

ODFW-led, On-The-Ground Connectivity Projects (\$1.24M)

Support Statewide Wildlife Transportation Advisory Committee (\$100k)

Wildlife
Connectivity

\$3.4M

2027-29



2027-29 Policy Option Packages

HB 4134

Support for projects that protect and enhance the species and habitats identified in the State Wildlife Action Plan and creating new opportunities for wildlife watching, urban conservation, community science, and other wildlife-associated recreation.

POP 104 Oregon Conservation & Recreation Fund

Permanent Grant Funding (\$2.8M + \$300k carryover)

Grant Support (1 FTE continue; \$300k)

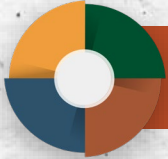
**Oregon
Conservation
Recreation
Fund**

\$3.4M

2027-29



2027-29 Policy Option Packages



HB 4134

Support implementation of the State Wildlife Action Plan so that Oregon's at-risk species and their ecosystems can thrive

POP 101

Recovering Oregon's Wildlife



Capacity & Immediate Investments/Actions

Know (\$12.7M)

Plan (\$2.6M)

Do (\$13.7M)

Landscape Scale/Ecosystem Level (\$21.8M)

Central Services & Govt Service Charges (\$6.3M)

2027-29

Recovering
Oregon's
Wildlife

\$57.1M

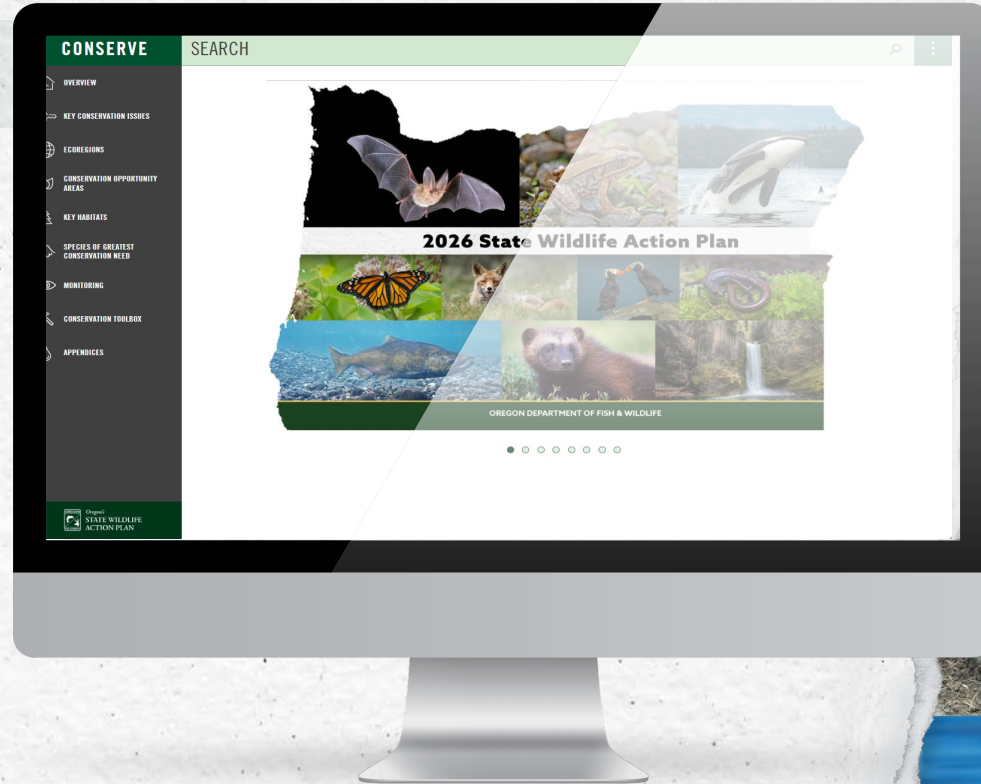


State Wildlife Action Plan (SWAP)

A Blueprint for Conservation in Oregon

SWAP GOALS

- Maintain healthy fish & wildlife populations
- Prevent declines of at-risk species
- Reverse declines in these resources where possible

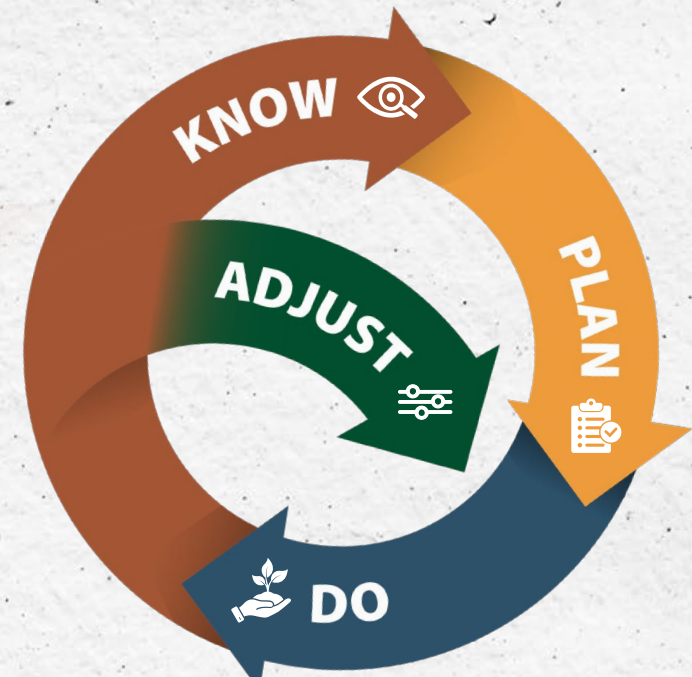


[SWAP.Oregon.gov](https://www.swap.oregon.gov)



2027-29 Policy Option Packages

HB 4134: Recovering Oregon's Wildlife



KNOW

- Population status
- Limiting factors
- Climate impacts
- Habitat conditions
- Restoration effectiveness



PLAN

- Collaborate
- Prioritize
- Design and permit
- Contract



DO

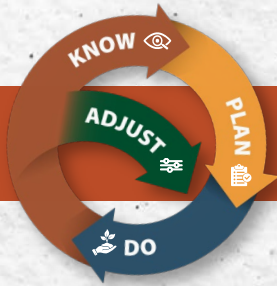
- Protect and Restore habitat, incl streamflow
- Restore Connectivity
- Address pollutants
- Mitigate development
- Translocate and Propagate
- Communicate impact of work

Oregon has the Recipe for Conservation Success

- Science-based • Pro-active • Adaptive • Collaborative •



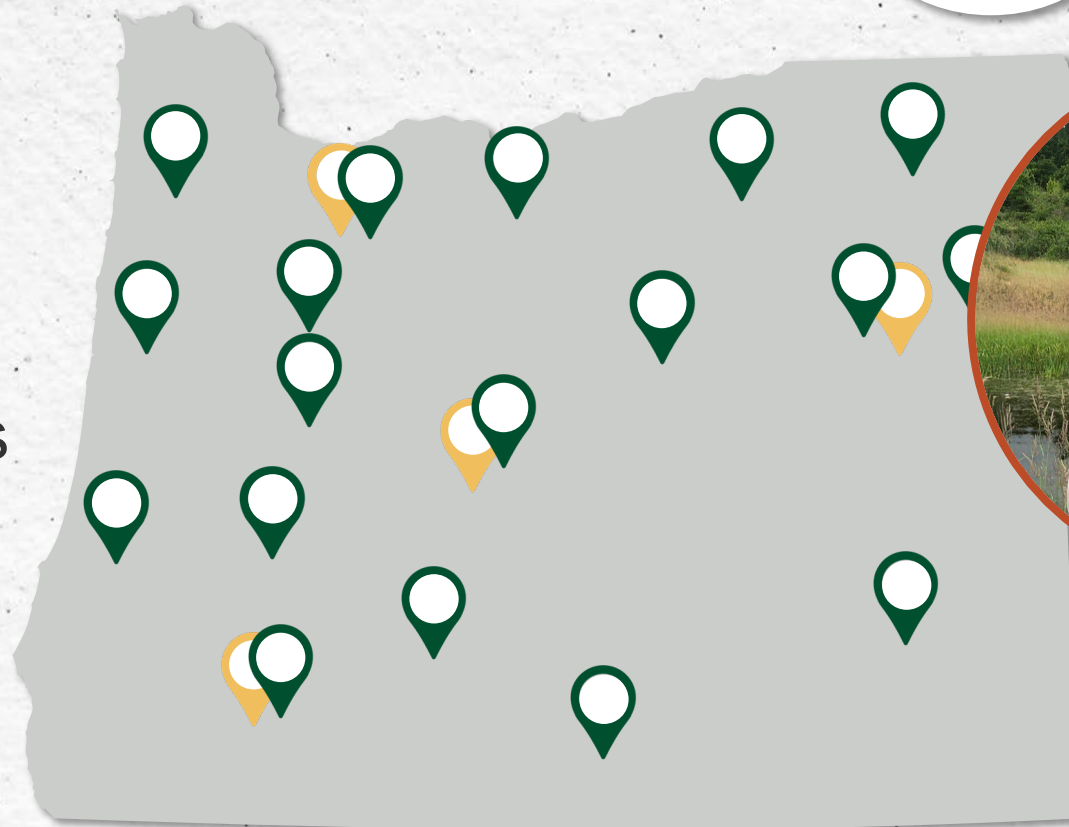
Recovering Oregon's Wildlife



 **Know**

\$9.1M

Boots on the ground:
Investment in Wildlife
Diversity Biologists to
Recover SWAP Species
(31 FTE including supervision, \$8.8M)



 Existing
 Proposed



• **Science-based** • **Pro-active** • **Adaptive** • **Collaborative** •



Recovering Oregon's Wildlife



Know

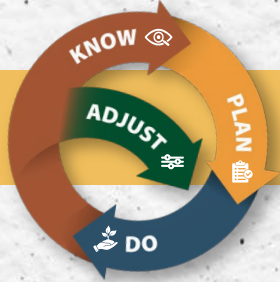
\$3.6M

- **On-the-ground capacity: Statewide Nongame Native Fish Biologists** (2 FTE, \$462K)
- **Long term monitoring for at-risk species** (\$500k)
Third-party contract to design a framework for statewide SWAP implementation, including wildlife monitoring, research and evaluation, and data-management systems
- **Immediate capacity & investments:**
 - Filling critical data gaps for birds, herps, mammals, and fish (3.5 FTE \$2.68M)
 - Wilson's Phalarope (ESA candidate spp.)
 - Oregon Vesper Sparrow (ESA candidate spp.)
 - Red Tree Vole (ESA candidate spp.)
 - Pygmy Rabbit (ESA candidate spp.)
 - Torrent Salamander (ESA candidate spp.)
 - White Sturgeon

• **Science-based** • **Pro-active** • **Adaptive** • **Collaborative** •



Recovering Oregon's Wildlife



Plan

\$2.6M

- **Statewide Specialists for SWAP Birds, Herps, and Mammals/Bats**
(3 FTE, \$775k)
- **Beaver Action Plan Position to Advance SWAP Species Benefits**
(0.75 FTE, \$496k)
- **GIS Capacity to Map Habitats, Analyze Connectivity & Distribution, and Track SWAP Outcomes** (2 FTE, \$594k)
- **Archaeologist to Enable Habitat Restoration Work for SWAP Species**
(1 FTE, \$324K)
- **Immediate investments in SWAP Species Conservation Planning:**
 - Columbian Sharp-tailed Grouse reintroduction planning (\$100k)
 - Analysis/planning to support Kit Fox habitat restoration (\$300k)



• **Science-based** • **Pro-active** • **Adaptive** • **Collaborative** •



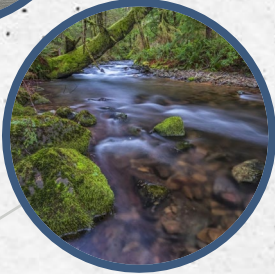
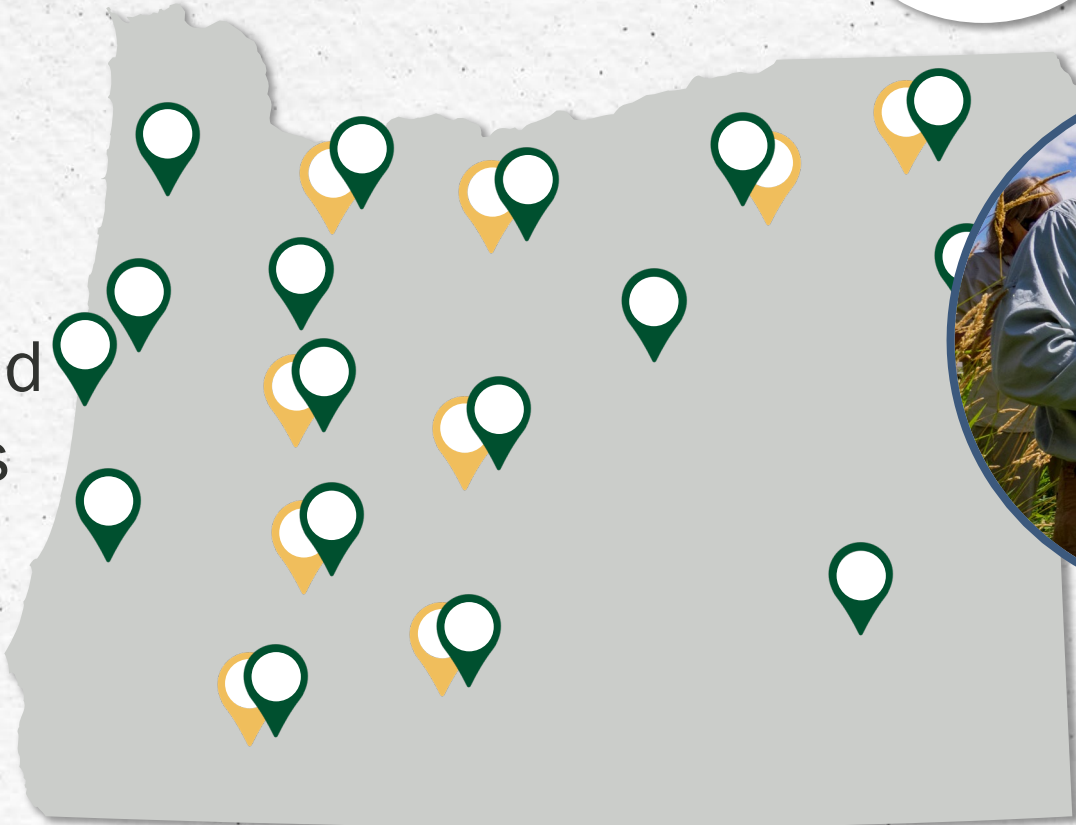
Recovering Oregon's Wildlife



 **Do**

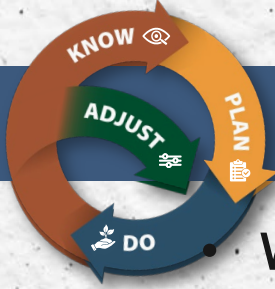
\$6.3M

Boots on the ground:
Investment in Habitat
Biologists to Protect and
Restore SWAP Habitats
(21 FTE including supervision, \$6.3M)



• **Science-based** • **Pro-active** • **Adaptive** • **Collaborative**

Recovering Oregon's Wildlife



Do

\$7.4M

- **Working Lands for Wildlife Program** (7 FTE, \$2M)
- **Public Lands Good Neighbor Biologist** (1 FTE, \$318k)
- **OSP Enforcement** (1 FTE, \$600k)
- **Comms Capacity & Outreach** (1 FTE, \$552K)
- **Immediate on-the-ground actions:**
 - Habitat restoration demonstration projects in Portland Metro area (\$760k)
 - Implementation of Pacific Fisher Reintroduction in SW Oregon (1.7M)
 - Habitat restoration for Burrowing Owl in Umatilla (\$200K)
 - Invasive Species Control in NW Oregon to benefit NW Pond Turtle (\$400k)
 - Klamath Bull Trout Recovery (\$500k)
 - Habitat restoration demonstration project for beaver (\$200K)

• **Science-based** • **Pro-active** • **Adaptive** • **Collaborative** •

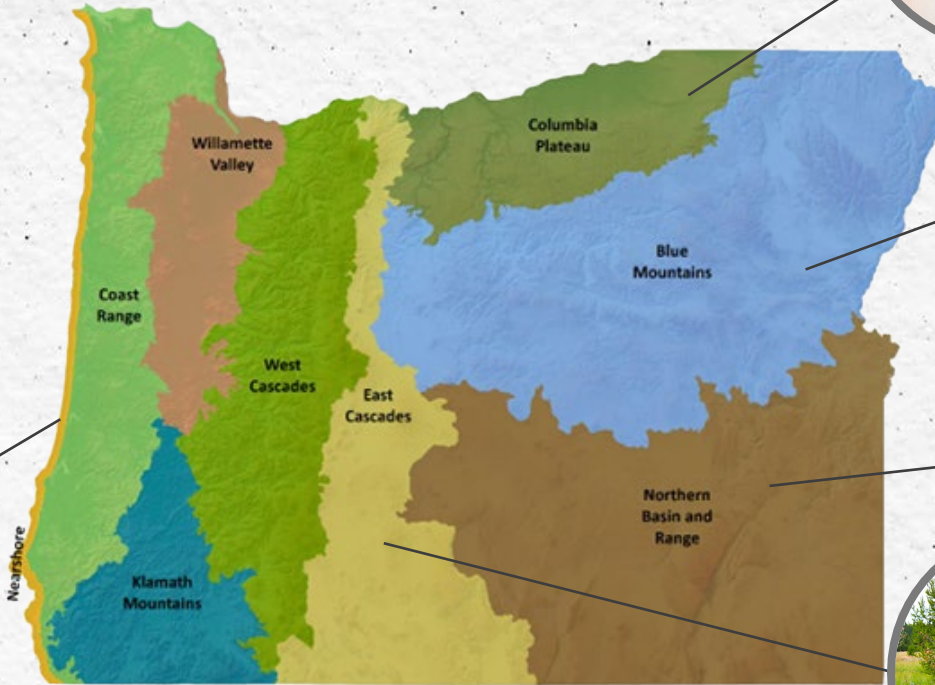


Applying a Landscape-Scale, Climate Lens To Know, Plan, Do

Across all SWAP Ecoregions:

- Boost capacity to drive projects forward,
- Support partners,
- Stay ahead of new challenges

\$1.5M per ecoregion (\$13.5M)



• Science-based • Pro-active • Adaptive • Collaborative •

Applying a Landscape-Scale, Climate Lens To Know, Plan, Do



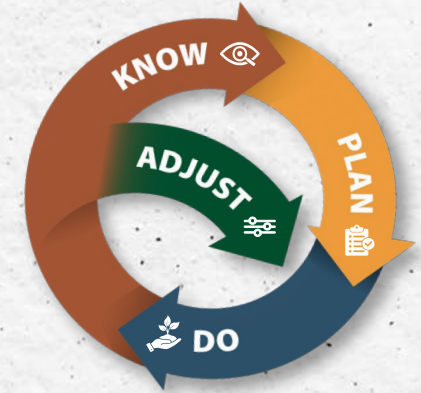
Nearshore Ecoregion: Targeted investments in to build long term resilience of kelp/rocky ecosystems

- Coastwide monitoring of kelp/rocky habitat (4 FTE, \$900K)
- Marine Resource Coordinator for efforts on sea otter restoration and Southern Resident Orca recovery actions (1 FTE; \$300k)
- Social science research to support Sea Otter reintroduction (\$100k)
- Outreach and research on Sunflower Seastar translocation (\$200k)



• Science-based • Pro-active • Adaptive • Collaborative

Applying a Landscape-Scale, Climate Lens To Know, Plan, Do



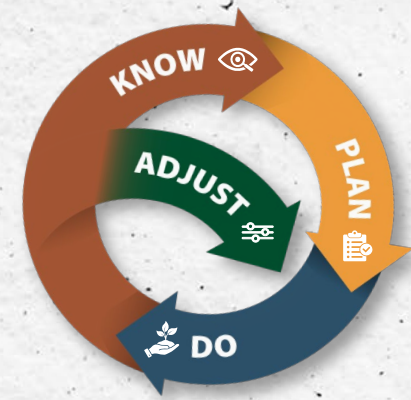
Klamath Ecoregion: Targeted investments to sustain rare species and reintroduce those no longer present, as long-term landscape-scale restoration progresses

- Mazama newt culture and translocation (\$300k)
- Support for Klamath sucker conservation (\$200k)
- Spring Chinook reintroduction (\$300k)
- Establish position to maintain screens and leverage federal investments (1 FTE, \$900k)
- Ecosystem restoration to recover rare bull-trout populations (\$500k)



• **Science-based** • **Pro-active** • **Adaptive** • **Collaborative** •

Applying a Landscape-Scale, Climate Lens To Know, Plan, Do



Eastern Ecoregions: Targeted investments to build rangeland resilience for SWAP species

- Sagebrush Sparrow, Desert Horned Lizard, Brewer's Sparrow, Washington Ground Squirrel, American Pika, Great Sage-grouse
- Drive a unified plan to mobilize partners and direct resources to top priority areas (\$500k)
- Tackle invasive annual grasses at landscape scale (\$2M)
- Support native seed supply for restoration and post-fire recovery (\$100k)
- Incentivize virtual fencing to restore habitat connectivity and support operations (\$1.7M)
- Rangeland monitoring & science partnerships (\$200k)



• **Science-based** • **Pro-active** • **Adaptive** • **Collaborative** •

Recovering Oregon's Wildlife



Central Services / Govt Service

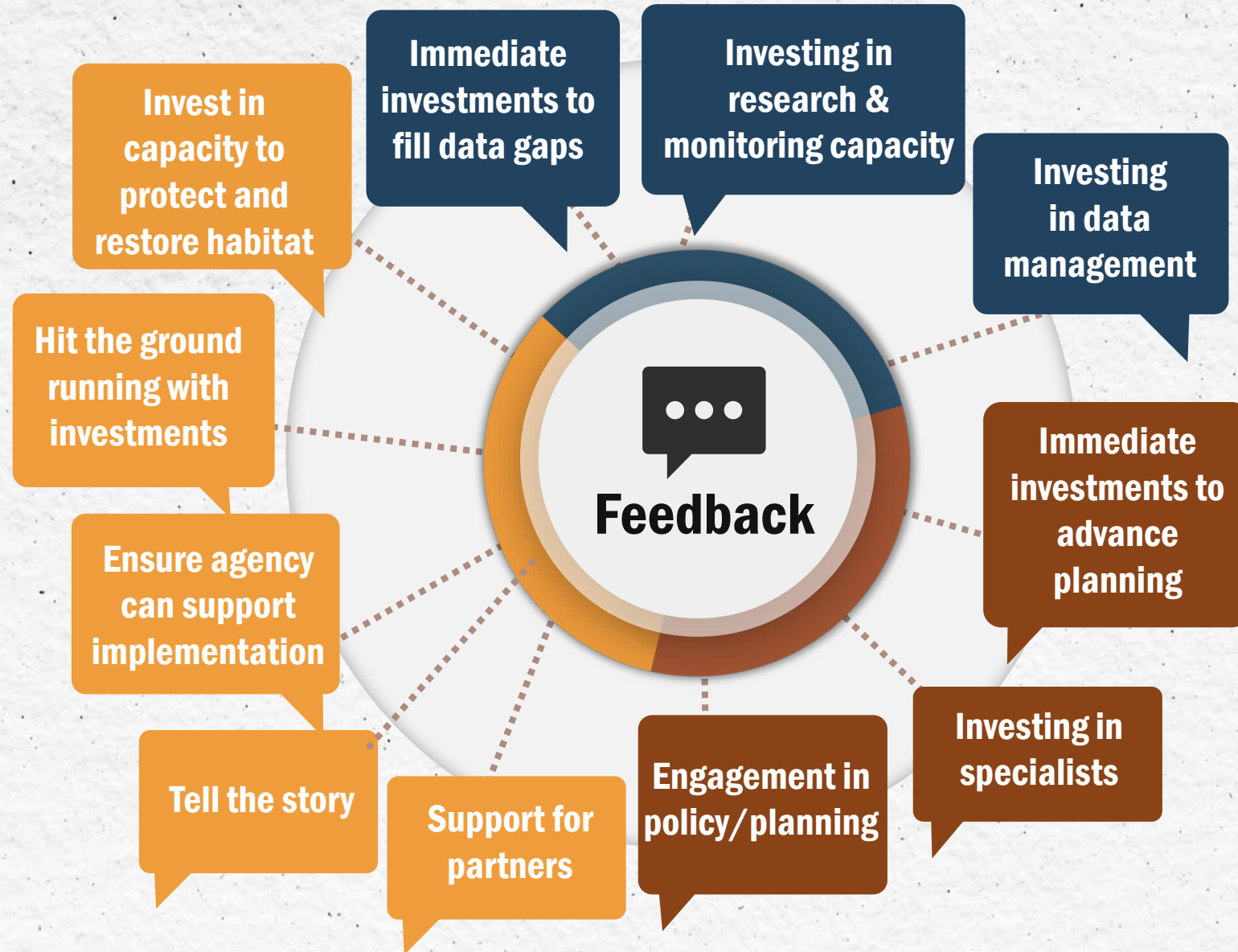
\$6.3M

- Central Services
HR, Contracting, Accounting (5 positions; \$1.4M)
- Habitat Division & Field Operations (3 positions; \$1.0M)
- Gov't Service Charges (\$1M estimated)
- General S&S (\$2.9M)



• Science-based • Pro-active • Adaptive • Collaborative •

What We're Hearing From Partners



2027-29 Policy Option Packages

Species Resiliency

- **105 Shellfish Population Surveys** (3 FTE; \$891k, OF-Lic)
Expand shellfish surveys, conduct education and outreach
- **106 Columbia Basin Restoration Initiative Outreach & Implementation** (\$500k OF-Foundation)
Strategic coordination, outreach, education, and implementation of CBRI
- **107 Hood Ecoregion Steelhead Monitoring** (3.17 FTE; \$628k, OF- HRWG and City of Portland)
Implement contract funded monitoring in the Hood Eco Region
- **108 Springfield Fish Sorter** (1 FTE, 238k, OF-EWEB and FF-USACE)
Implement contract funded actions in the Mckenzie Basin
- **109 Invasive Species Prevention and Detection** (.17 FTE, \$49k FF-USACE)
Expands capacity to preven and manage invasive species, increases outreach

Serving Oregonians

- **110 Seasonal Sauvie Island Wildlife Area** (.58 FTE; \$321,151, OF-Lic Beaches Parking Pass)
Implements seasonal Sauvie Island Parking Program- Connecting Oregonians while protecting wildlife



2027-29 Policy Option Packages

Resilient Infrastructure



- **POP 111 Hatchery Resiliency Infrastructure** (3 FTE; \$30.8M, OF-GO Bond)
Continuing strategic investments, informed by 3rd party assessment, to increase the sustainability and resiliency of Oregon's hatchery system
- **POP 113 Deschutes Watershed Office Construction & Central Point Office Design** (\$11M, OF-GO Bond)
Continued and systematic investments to improving agency infrastructure
- **POP 115 Klamath Hatchery Capacity** (\$5M, OF-Yurok Tribe)
Adding capacity to Klamath Hatchery to support reintroduction efforts
- **POP 116 Fish Passage Infrastructure** (\$9M, OF-lottery revenue bonds)
Continued investment in improving fish passage infrastructure



2027-29 Policy Option Packages

Resilient Infrastructure



- **POP 117 Sustainable Umpqua Hatchery Capacity** (3 FTE; \$71,190,000, OF-Ins, FF-FEMA, OF-TBD)

Utilizes insurance funds and FEMA funds to maintain pre fire Umpqua Basin hatchery production across facilities

Partial Rebuild of Rock Creek Hatchery for CHS production

New South Umpqua Facility to maintain coho/steelhead programs

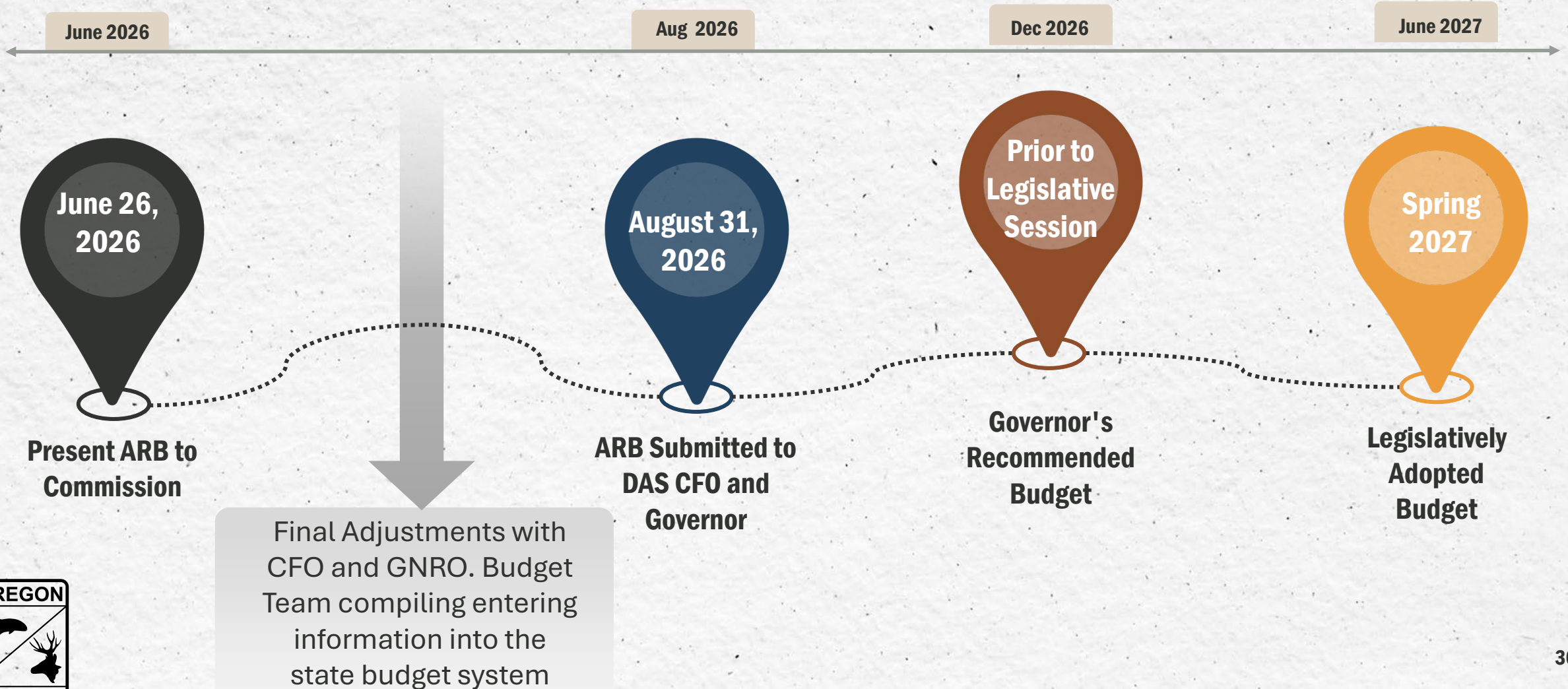
In partnership with the Cow Creek Band of Umpqua Tribe of Indians

Hybrid option, increases resilience, production stability, partnerships, lower construction costs

- **POP 118 Capital Construction: Non-Bond Eligible Costs** (\$100k, OF-License)
Provides funding for construction costs that are not bond eligible



2027-29 Budget Development:



Staff Recommendation

Staff recommend approving the department's 2027-29 Agency Request Budget, with recognition that further adjustments could be made by the department based on DAS Chief Financial Office or Governor's Office guidance, or as budgetary estimates are refined.